



MATERIALS

Caron® Simply Soft Tweeds™ (5 oz/141 g; 250 yds /228 m)

Main Color (MC)

Off White Tweed (23001) **9 balls or 2075 yds/1897.5 m**

Caron® Simply Soft® (6 oz/170 g; 315 yds/288 m)

Contrast A Dark Sage (39707) **1 ball or 205 yds/187.5 m**

Contrast B Burgundy (39762) **1 ball or 205 yds/187.5 m**

Contrast C Plum Wine (39722) **1 ball or 205 yds/187.5 m**

Contrast D Gold (39782) **1 ball or 205 yds/187.5 m**

Contrast E Pistachio (0003) **1 ball or 205 yds/187.5 m**

Size U.S. H/8 (5 mm) Susan Bates® Silvalume® crochet hook **or size needed to obtain gauge.** Susan Bates® yarn needle.



CROCHET | SKILL LEVEL: **INTERMEDIATE**

ABBREVIATIONS

Approx = Approximately

Ch = Chain(s)

Cont = Continue(ity)

Rep = Repeat

RS = Right side

Sc = Single crochet

Sl st = Slip stitch

St(s) = Stitch(es)

Tog = Together

WS = Wrong side

MEASUREMENTS

Approx 51" x 59½" [129.5 x 151 cm].

GAUGE

13 sc and 14 rows = 4" [10 cm].

INSTRUCTIONS

MOTIF

(make 9 each with A and B as Contrast, make 8 each with C, D, and E as Contrast).

Notes:

- Carry color not in use across top of entire previous row and work sts around it. This will ensure even gauge as all sts will be worked around an extra strand of yarn held across top of previous row.
- Carry both colors up side of work.

With MC, ch 27.

Work Chart on page 2, noting each square of chart is equal to 1 sc and reading RS rows from **right to left** and WS rows from **left to right**.

1st row: (RS). 1 sc in 2nd ch from hook. 1 sc in each ch to end of chain. Turn. 26 sc.

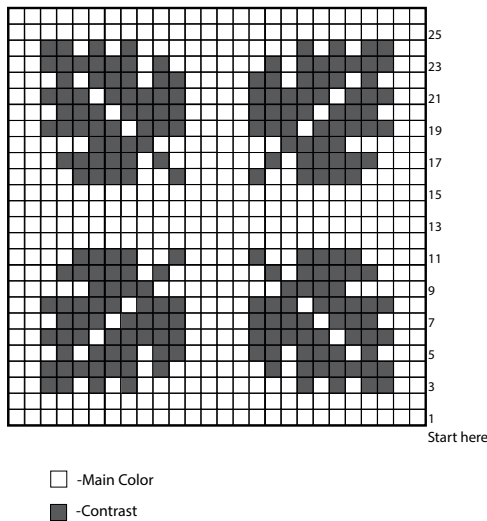
2nd row: Ch 1. 1 sc in each sc to end of row. Turn.

First 2 rows of Chart are complete. Rep 2nd row and cont working Chart until 26th row of Chart is complete.

Fasten off.

Motif Border: With RS facing, join MC with sl st to any corner.

1st rnd: Ch 1. Work sc evenly around outer edge, working 3 sc in each corner. Join with sl st to first sc. Fasten off.

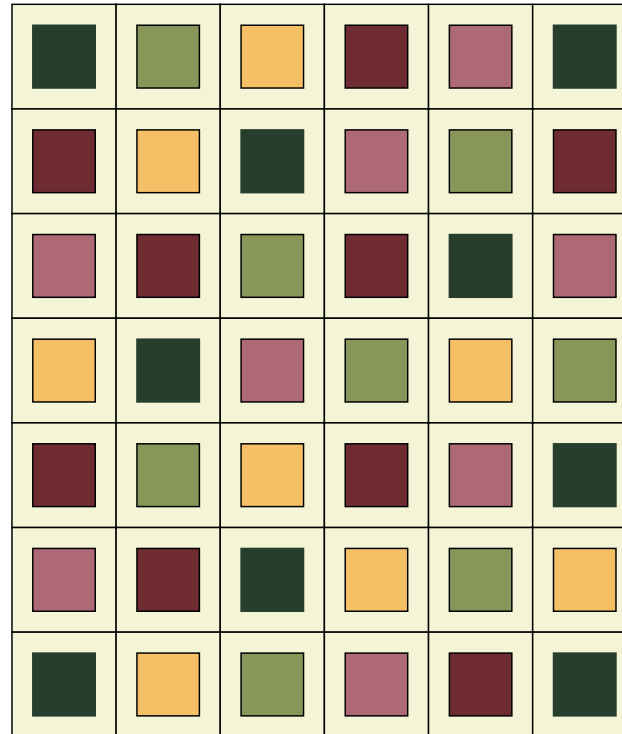


With MC, sew Motifs using Whipstitch as shown in Assembly Diagram.

Blanket Border: With RS facing, join MC with sl st to any corner of Blanket.

1st rnd: Ch 1. Work sc evenly around outer edge, working 3 sc in each corner. Join with sl st to first sc. Fasten off.

ASSEMBLY DIAGRAM



WHIPSTITCH DIAGRAM

