



CROCHET | SKILL LEVEL: INTERMEDIATE

ABBREVIATIONS

Approx =	Dec = Decrease	Sl st = Slip stitch
Approximately	Rem = Remaining	Sp(s) = Space(s)
Beg = Begin(ning)(s)	Rep = Repeat	St(s) = Stitch(es)
Ch = Chain(s)	Rnd(s) = Round(s)	Yoh = Yarn over hook
Cont = Continue(ity)	RS = Right side	
Dc = Double crochet	Sc = Single crochet	

MEASUREMENTS

Approx 50" x 59" [127 x 150 cm].

GAUGE

12 sc and 13 rows = 4" [10 cm].

INSTRUCTIONS

BLANKET

Notes:

- Blanket is worked diagonally from corner to corner.
- When working from Chart, wind small balls of the colors to be used, one for each separate area of color in the design.

- Start new colors at appropriate points. To change color, work to last 2 loops on hook, yoh with new color, pull through 2 loops on hook to complete st and proceed in new color.
- Each square of chart represents 1 block.

With A, ch 6. See *crochet diagram on page 3 and Blanket Chart on page 3*.
1st row: (RS). 1 dc in 4th ch from hook (counts as 2 dc). 1 dc in each of last 2 ch. Turn. 1 block made.
2nd row: Ch 6. 1 dc in 4th ch from hook. 1 dc in each of next 2 ch – beg block made. (Sl st. Ch 3. 3 dc) in next ch-3 sp – block made. Turn. 2 blocks.

MATERIALS

Caron® One Pound™ (16 oz/454 g; 812 yds/742 m)

Contrast A Off White (10514)	3 balls or 1950 yds/1783 m
Contrast B Truffle (10652)	1 ball or 349 yds/319 m
Contrast C Sunflower (10549)	1 ball or 250 yds/228.5 m
Contrast D Grass Green (10620)	1 ball or 348 yds/318 m
Contrast E Country Rose (10535)	1 ball or 270 yds/247 m

Size U.S. H/8 (5 mm) Susan Bates® Silvalume® crochet hook **or size needed to obtain gauge.** Susan Bates® yarn needle. Polyfill stuffing for Mushroom Pompoms.

3rd row: Beg block. *Block in next ch-3 sp. Rep from * to end of row. Turn. 3 blocks.

Keeping cont of color changes in Chart on page 3 (each square on grid represents 1 block), rep last row until 60th row of chart is complete. 60 blocks.

Keeping cont of Chart, proceed as follows to work sides even:

61st row: Sl st in each of first 3 dc. *Block in next ch-3 sp. Rep from * to end of row. Turn.

62nd row: Beg block. *Block in next ch-3 sp. Rep from * to last ch-3 sp. Sl st in last ch-3 sp. (**Do not** make a block). **Turn.**

63rd to 72nd rows: Rep last 2 rows 5 times more.

Keeping cont of Chart, proceed as follows to dec corner:

73rd row: (RS). Sl st in each of first 3 dc. *Block in next ch-3 sp. Rep from * to last ch-3 sp. Sl st in last ch-3 sp. (**Do not** make a block). **Turn.**

Keeping cont of Chart, rep last row until 1 block rem. Fasten off.

Edging: 1st rnd: (RS). Join D with sl st to any corner. Ch 3 (counts as dc). Work dc evenly around, working 5 dc in each corner. Join with sl st to top of ch 3.

2nd rnd: Ch 3. 1 dc in each dc around, working 5 dc in each corner dc. Join with sl st to top of ch 3. Fasten off.

MUSHROOM "POMPOMS"

Make 2 with C as Color 1 and A as Color 2.

Make 2 with E as Color 1 and B as Color 2.

Note: Join all rnds with sl st to first sc.

With Color 1, ch 2.

1st rnd: 6 sc in 2nd ch from hook. Join. 6 sc.

2nd rnd: Ch 1. 2 sc in each sc around. Join. 12 sc.

3rd rnd: Ch 1. *1 sc in next sc. 2 sc in next sc. Rep from * around. Join. 18 sc.

4th rnd: Ch 1. *1 sc in each of next 2 sc. 2 sc in next sc. Rep from * around. Join. 24 sc.

5th to 7th rnds: Ch 1. 1 sc in each sc around. Join.

8th rnd: Ch 1. *1 sc in each of next 3 sc. 2 sc in next sc. Rep from * around. Join. 30 sc.

9th rnd: Ch 1. *1 sc in each of next 4 sc. 2 sc in next sc. Rep from * around. Join. 36 sc.

10th rnd: Ch 1. *1 sc in each of next 5 sc. 2 sc in next sc. Rep from * around. Join. 42 sc.

11th and 12th rnds: Ch 1. 1 sc in each sc around. Join.

13th rnd: Break Color 1. Join Color 2. Ch 1. *Working in back loops only*, *1 sc in each of next 5 sc. Sc2tog. Rep from * around. Join. 36 sc.

14th rnd: Ch 1. *1 sc in each of next 4 sc. Sc2tog. Rep from * around. Join. 30 sc.

15th rnd: Ch 1. *1 sc in each of next 3 sc. Sc2tog. Rep from * around. Join. 24 sc.

16th rnd: Ch 1. *1 sc in each of next 2 sc. Sc2tog. Rep from * around. Join. 18 sc.

17th rnd: Ch 1. *Working in back loops only*, 1 sc in each sc around. Join.

Stuff Mushroom Cap firmly.

18th to 20th rnds: Ch 1. 1 sc in each sc around. Join.

21st rnd: Ch 1. *1 sc in each of next 2 sc. 2 sc in next sc. Rep from * around. Join. 24 sc.

22nd to 24th rnds: Ch 1. 1 sc in each sc around. Join.

25th rnd: Ch 1. *1 sc in each of next 2 sc. Sc2tog. Rep from * around. Join. 18 sc.

Stuff Mushroom Stem firmly.

26th rnd: Ch 1. *1 sc in next sc. Sc2tog. Rep from * around. Join. 12 sc.

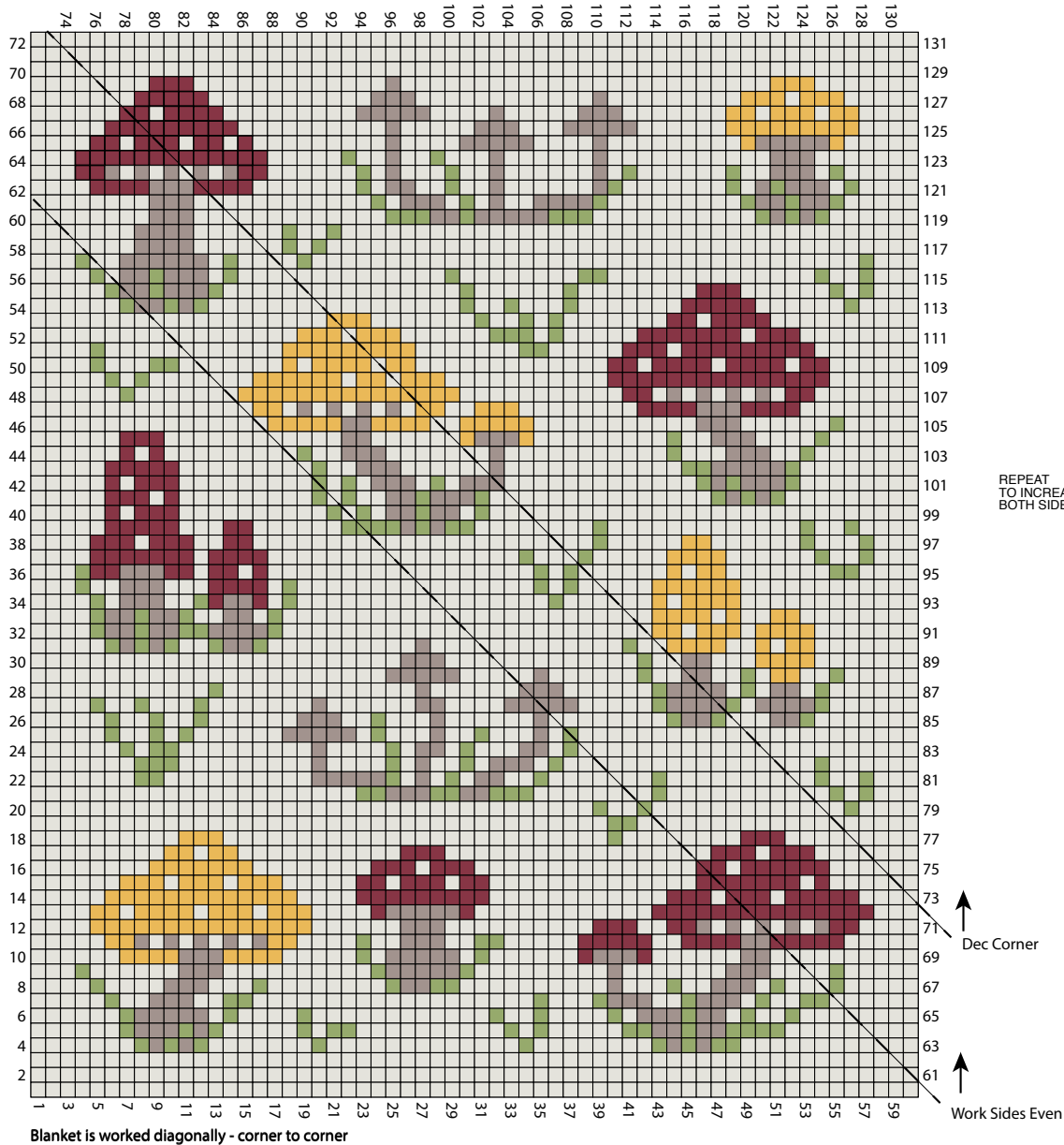
27th rnd: Ch 1. (Sc2tog) 6 times. Join. 6 sc.

Fasten off, leaving a long end. Draw end tightly through rem sts.

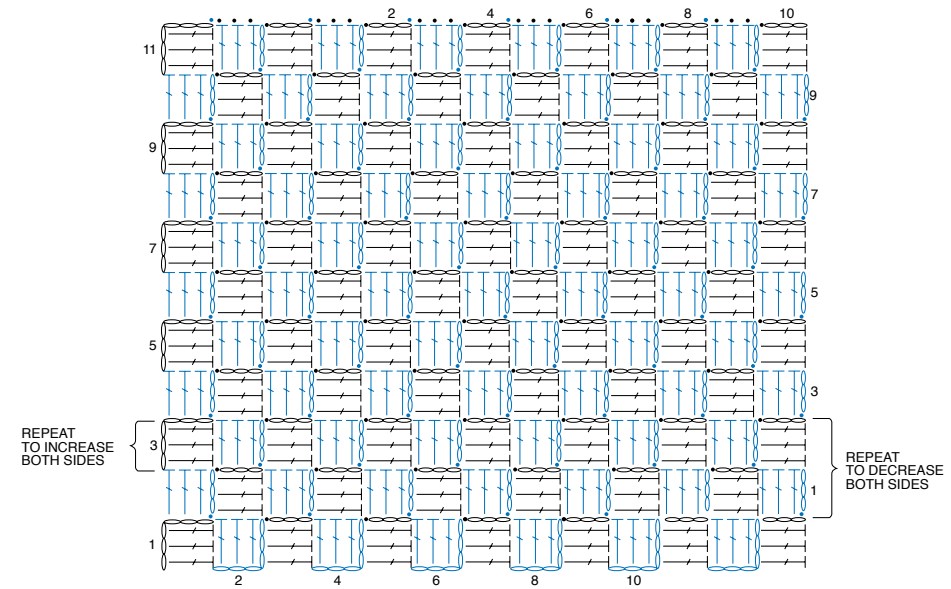
Using length of Color 2, embroider gills and spots on Mushroom Cap as shown in photo.

Attach Mushrooms to corners of Blanket as shown in photo.





Blanket is worked diagonally - corner to corner



STITCH KEY

- = chain (ch)
- = slip stitch (sl st)
- ┌ = double crochet (dc)

KEY

- = Contrast A
- = Contrast B
- = Contrast C
- = Contrast D
- = Contrast E