



CROCHET | SKILL LEVEL: INTERMEDIATE

ABBREVIATIONS

Approx = Approximately

Beg = Begin(ning)(s)

Ch = Chain(s)

W3dc = Insert hook from front to back under first set of ch-sp 1 row below. (Yoh) twice. Pull hook to front of work. Insert hook from front to back under next set of ch-sp 2 rows below. (Yoh) twice and draw up a loop in indicated st 3 rows below. (Yoh and draw through 2 loops on hook. Yoh and draw through 2 loops and ch-sp) twice. Yoh and draw through last 2 loops on hook.

Pat = Pattern

Rep = Repeat

RS = Right side

Sc = Single crochet

Scbl = Single crochet in back loop only

Sp(s) = Space(s)

St(s) = Stitch(es)

WS = Wrong side

Yoh = Yarn over hook

MATERIALS

Caron® One Pound™ (16 oz/453.6 g; 812 yds/742 m)

Contrast A Blue Grotto (15019) **1 ball**

Contrast B Hosta (10638) **2 balls**

Size U.S. H/8 (5 mm) crochet hook **or size needed to obtain gauge.**
Yarn needle.

MEASUREMENTS

Approx 45" x 50" [114.5 x 127 cm].

GAUGE

12 sc and 13 rows = 4" [10 cm]

INSTRUCTIONS

Notes:

- Ch 3 at beg of row counts as dc.
- To change color, work to last 2 loops on hook and draw new color through last 2 loops, then proceed in new color.

With A, ch 137. See diagrams on page 3.

Proceed in Check Pat as follows:

1st row: (RS). 1 dc in 4th ch from hook. 1 dc in each of next 3 ch. *Ch 5. Skip next 5 ch. 1 dc in each of next 5 ch. Rep from * to end of chain. Turn.

2nd row: Ch 3. 1 dc in each of next 4 dc. *Ch 5. Skip next ch-5 sp. 1 dc in each of next 5 dc. Rep from * to end of row. Join B. Turn.

3rd row: With B, ch 1. 1 sc in each of first 5 dc. *(W3dc in next skipped ch 3 rows below) 5 times. 1 sc in each of next 5 dc. Rep from * to end of row. Fasten off. **Do not** turn. 135 sts.

4th row: (RS). Join B with sl st to first sc. Ch 3. 1 dc in each of next 4 sc. *Ch 5. Skip next 5 sts. 1 dc in each of next 5 sc. Rep from * to end of row. Turn.

5th row: With B, as 2nd row. Join A.

6th row: (RS). With A, ch 1. 1 sc in each of first 5 dc. *(W3dc in next sc 3 rows below) 5 times. 1 sc in each of next 5 dc. Rep from * to end of row. Fasten off. **Do not** turn.

7th row: (RS). With A, as 4th row.

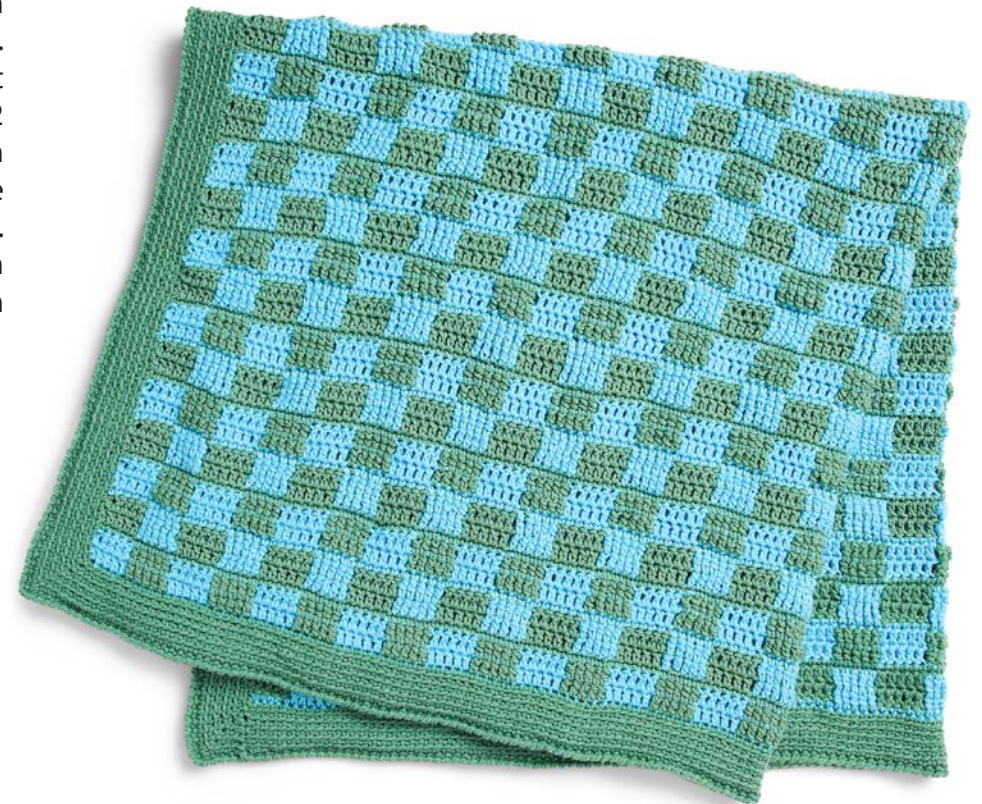
8th row: With A, as 2nd row. Join B.

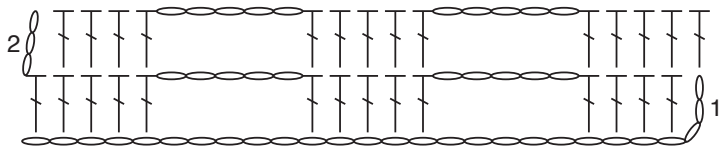
Rep 3rd to 8th rows for Check Pat until work from beg measures approx 44" [112 cm], ending on 3rd or 6th row. Fasten off.

Edging: 1st rnd: (RS). Join B with sl st to top right corner. Ch 1. Work 1 rnd of sc evenly around having (1 sc. Ch 1. 1 sc) in each corner. Join with sl st to first sc.

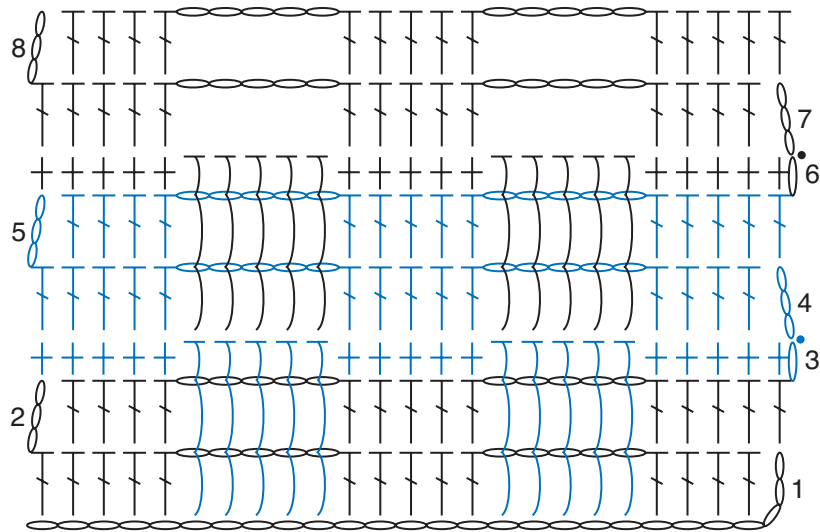
2nd to 6th rnds: Ch 1. Work in scbl evenly around having (1 sc. Ch 1. 1 sc) in each corner ch-1 sp. Join with sl st to first sc.

7th rnd: Ch 1. Draw up a loop in same sp as sl st (2 loops on hook). Rotate hook 360 degrees to twist loops. Yoh and draw through 2 loops on hook. *Draw up a loop in next sc (2 loops on hook). Rotate hook 360 degrees to twist loops. Yoh and draw through 2 loops on hook. Rep from * around. Join with sl st to first sc. Fasten off.









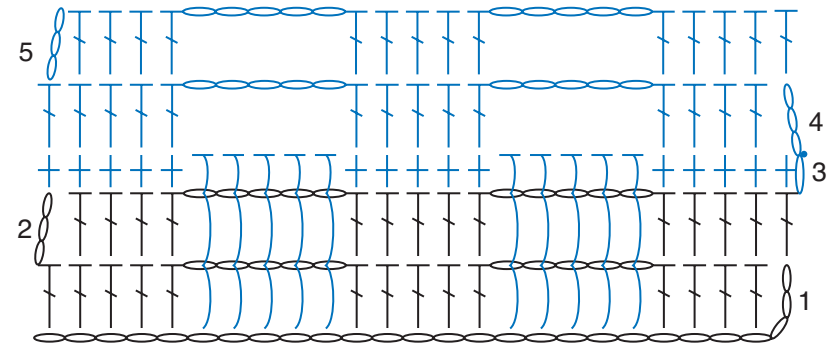
REDUCED SAMPLE OF CHECK PATTERN
1st and 2nd row



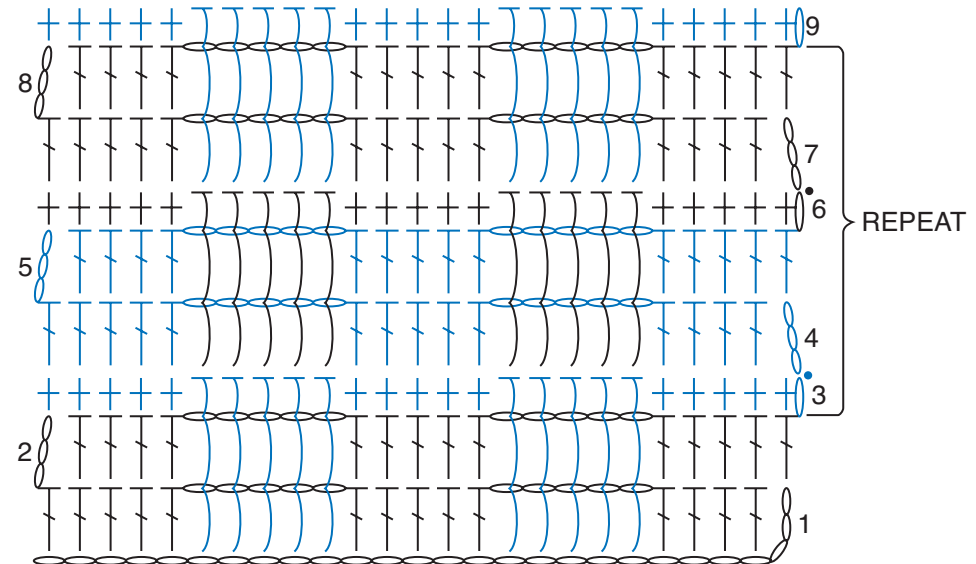
REDUCED SAMPLE OF CHECK PATTERN
1st through 8th row

STITCH KEY

-  = chain (ch)
-  = single crochet (sc)
-  = double crochet (dc)
-  = W3dc



REDUCED SAMPLE OF CHECK PATTERN
1st through 5th row



REDUCED SAMPLE OF CHECK PATTERN
1st through 9th row