



CROCHET | SKILL LEVEL: **INTERMEDIATE**

ABBREVIATIONS

Approx =

Approximately

Beg = Begin(ning)

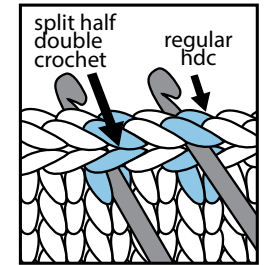
Ch = Chain(s)

Hdc = Half double
crochet

Rep = Repeat

RS = Right side

Splhdc = Split half
double crochet: work
hdc between 'legs'
at front and back of
stitch (splitting stitch)
instead of through
top loops. Stitches
should appear as
"V"s on RS and WS of
work.



St(s) = Stitch(es)
WS = Wrong side

MEASUREMENTS

Approx 46" x 57" [117 x 144.5 cm].

GAUGE

8.5 splhdc and 11.5 rows = 4" [10 cm].

INSTRUCTIONS

Notes:

- Ch 1 at beg of rows **does not** count as stitch.
- Work color changes using intarsia technique. Use separate balls of yarn for each area of color in the design. When joining colors, work to last 2 loops on hook of first color. Pick up new color **under** old color at WS of work to lock colors in and avoid a hole. Draw new color through last 2 loops and proceed in new color, leaving old color at WS of work.

MATERIALS

Caron® One Pound™ (16 oz/453.6 g; 812 yds/742 m)

Contrast A Royalty (10530) **1 ball**

Contrast B Off White (10514) **1 ball**

Contrast C Dark Pink (10621) **1 ball**

Contrast D Sunflower (10549) **1 ball**

Contrast E Living Coral (02003) **1 ball**

Size U.S. L/11 (8 mm) crochet hook **or size needed to obtain gauge.**
Yarn needle.

- Each square on chart represents one stitch.
- Read RS (odd numbered) rows of chart from right to left and WS (even numbered) rows of chart from left to right.

BLANKET

With A, ch 101.

Beg working chart on page 3 noting 1st row is RS.

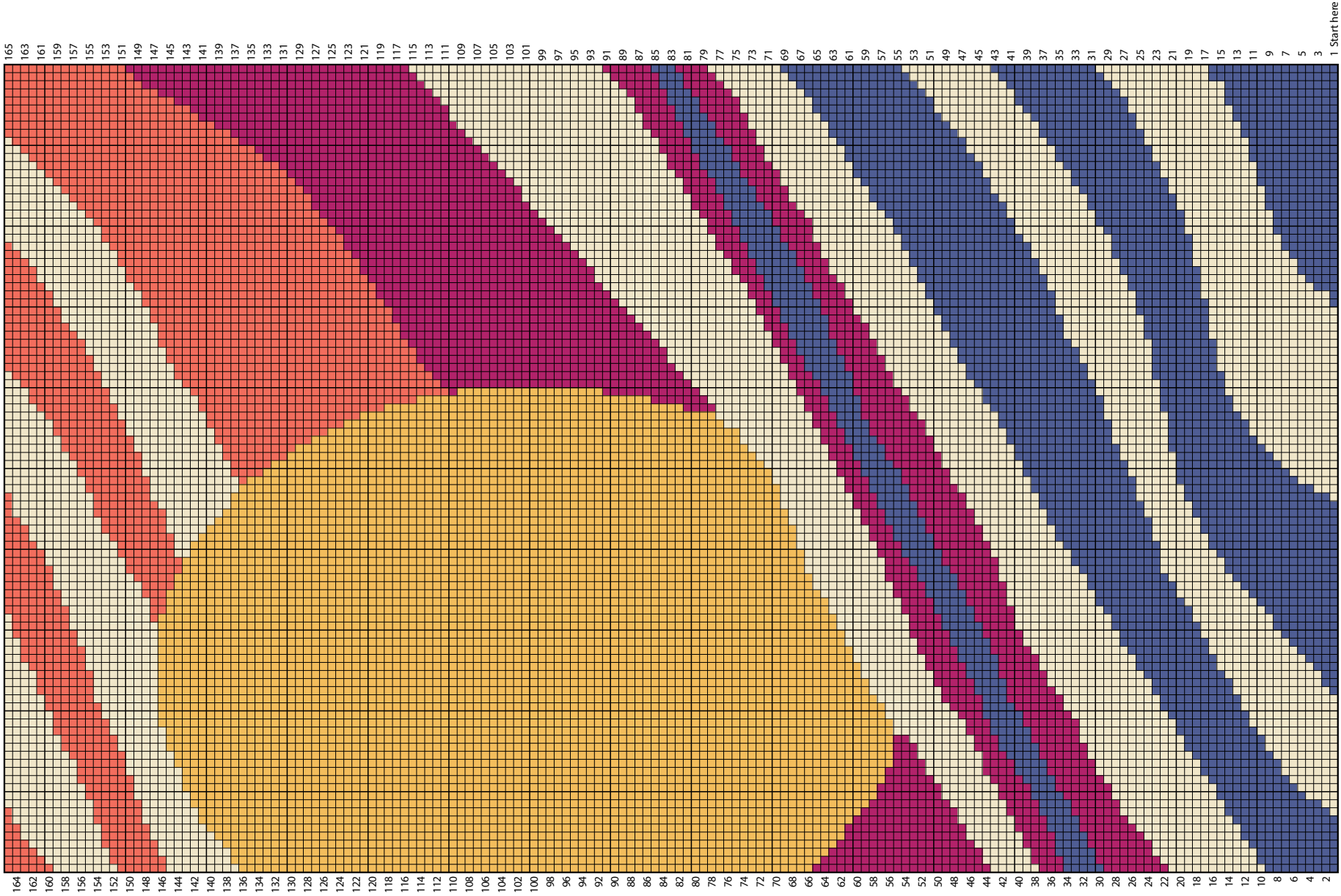
1st row: (RS). Following colors in Chart, 1 hdc in 2nd ch from hook. 1 hdc in each ch to end of ch. Turn. 100 hdc.

2nd row: Ch 1. Following colors in Chart, 1 splhdc in each st to end of row. Turn.

Rep 2nd row until 165 rows of Chart are complete.

Fasten off.





Note: Each square represents 1 stitch.

- Key
- = Contrast A
 - = Contrast B
 - = Contrast C
 - = Contrast D
 - = Contrast E