



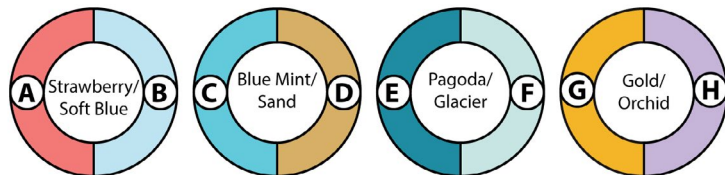
CROCHET | SKILL LEVEL: INTERMEDIATE

ABBREVIATIONS

Approx =	Dc = Double crochet	Sl st(s) = Slip stitch(es)
Approximately	Dec = Decrease	Sp(s) = Space(s)
Beg = Beginning	Rem = Remain(ing)	Tog = Together
Ch = Chain(s)	Rep = Repeat	WS = Wrong side
Cont = Continue(ity)	RS = Right side	

MATERIALS

Caron® Simply Soft® O'Go™ (5 oz/141 g; 250 yds/228 m)
Contrast A and B: Strawberry/Soft Blue (40026) **3 O'Gos**
Contrast C and D: Blue Mint/Sand (40011) **3 O'Gos**
Contrast E and F: Pagoda/Glacier (40005) **3 O'Gos**
Contrast G and H: Gold/Orchid (40021) **3 O'Gos**



Size U.S. J/10 (6 mm) crochet hook **or size needed to obtain gauge.**
 Yarn needle.

MEASUREMENTS

Approx 51" x 61" [129.5 x 155 cm].

GAUGE

5 blocks = 4" [10 cm] in pat.
 Motif = Approx 25½" x 30½" [65 x 77.5 cm].

INSTRUCTIONS

Notes:

- To begin working with the O'Go format, carefully cut plastic tie where the ends of the O'Go meet.
- Pull tie to remove.
- Colors can be easily separated by gently pulling apart and cutting at the color transition. Each color is ready to use.
- Designate each color A, B, C, D, E, F, G and H as indicated in Materials.

- To change color, work to last 2 loops on hook and draw new color through last 2 loops and proceed in new color.
- Blanket is worked in 4 Motifs worked diagonally from corner to corner and joined together in finishing.

MOTIF (make 4)

With A, ch 6. See stitch diagram on page 3 and Chart on page 3. Each square of chart represents 1 block.

1st row: (RS). 1 dc in 4th ch from hook (counts as 2 dc). 1 dc in each of last 2 ch. Turn. 1 block made.

2nd row: Ch 6. 1 dc in 4th ch from hook. 1 dc in each of next 2 ch – beg block made. (Sl st. Ch 3. 3 dc) in next ch-3 sp – block made. Turn. 2 blocks.

3rd row: Beg block. *Block in next ch-3 sp. Rep from * to end of row. Turn. 3 blocks.

Keeping cont of color changes in Chart (each square on grid represents 1 block), rep last row until 32nd row of chart is complete. 32 blocks.

Keeping cont of Chart, proceed as follows to work sides even:

33rd row: Sl st in each of first 3 dc. *Block in next ch-3 sp. Rep from * to end of row. Turn.

34th row: Beg block. *Block in next ch-3 sp. Rep from * to last ch-3 sp. Sl st in last ch-3 sp. (Do not make a block.) Turn.

35th to 38th rows: Rep last 2 rows twice more.

Keeping cont of Chart, proceed as follows to dec corner:

39th row: Sl st in each of first 3 dc. *Block in next ch-3 sp. Rep from * to last ch-3 sp. Sl st in last ch-3 sp. (Do not make a block.) Turn.

Keeping cont of Chart, rep last row until 1 block rem. Fasten off.

FINISHING

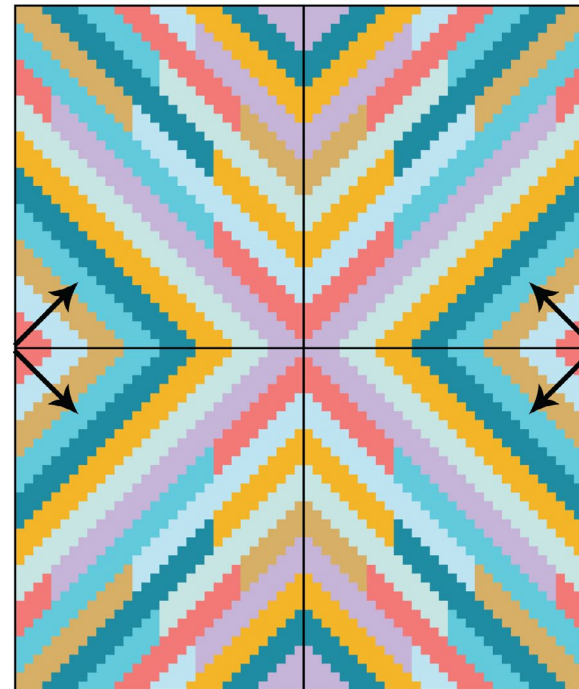
Joining Motifs

Using color to match stripes, sew 4 Motifs tog as shown in Assembly Diagram, noting Motifs are rotated and mirrored to form 'X' pattern (2 Motifs will have RS facing, and 2 Motifs will have WS facing). Take care to align edges and match stripes, and make sure seams are hidden.

Assembly Diagram

Motif
RS Facing

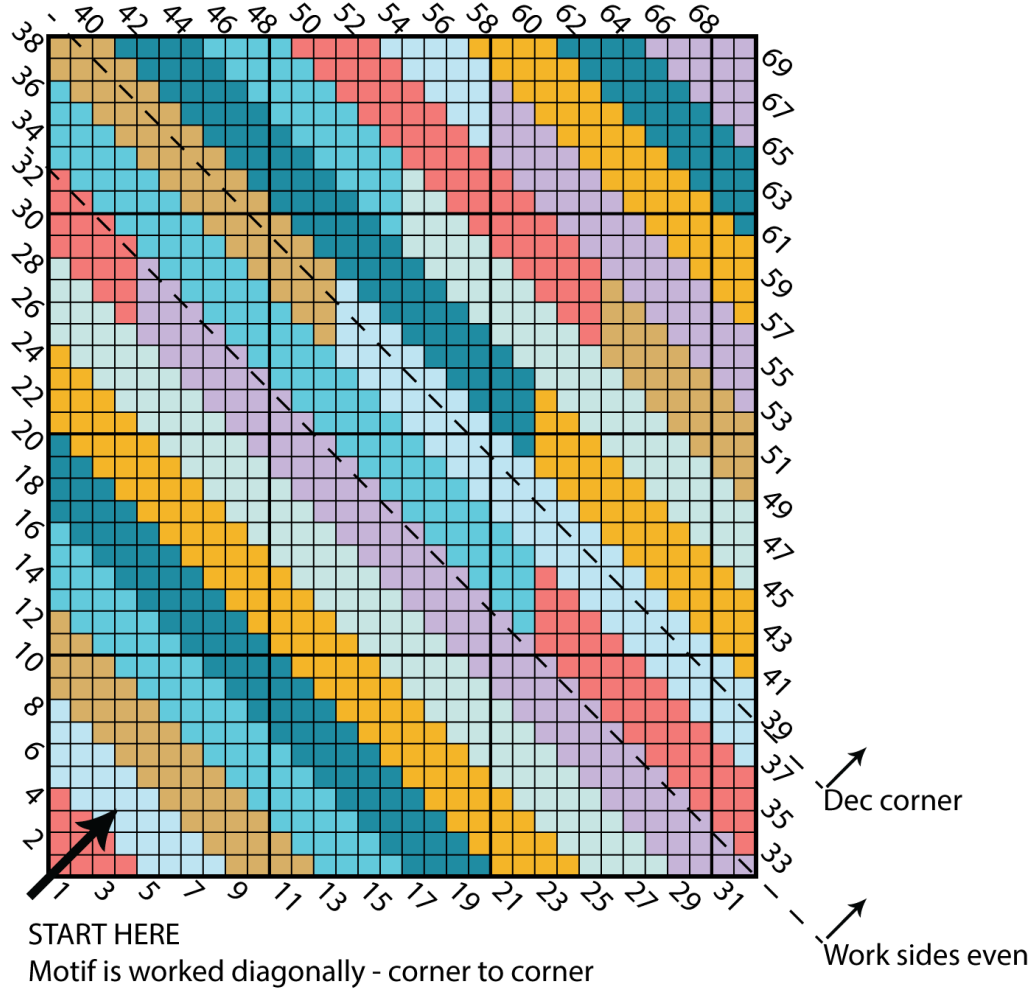
Motif
WS Facing



Motif
WS Facing

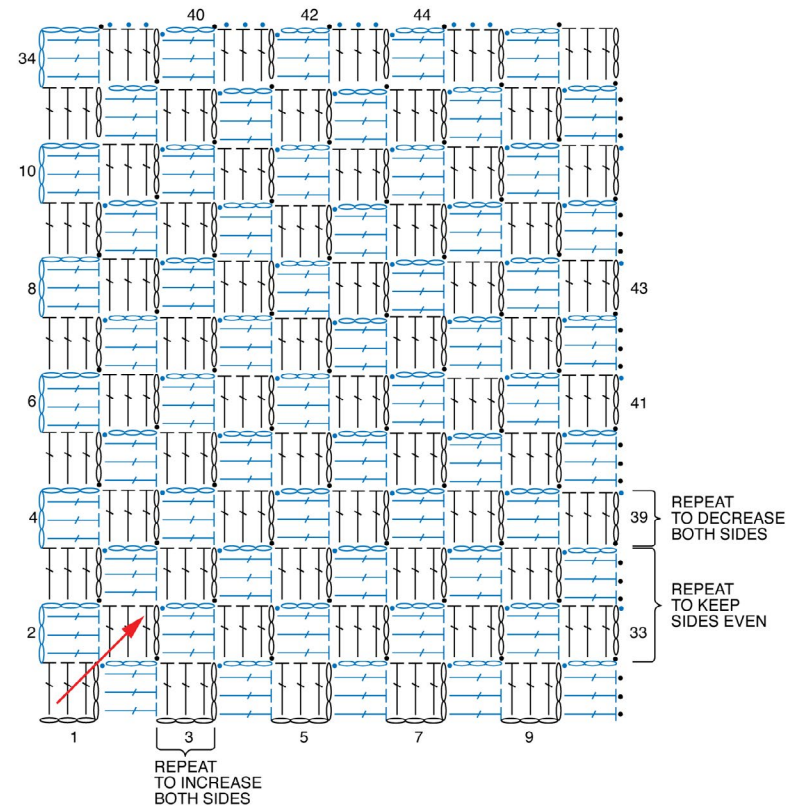
Motif
RS Facing





KEY

- = Contrast A
- = Contrast E
- = Contrast B
- = Contrast F
- = Contrast C
- = Contrast G
- = Contrast D
- = Contrast H



MOTIF
REDUCED SAMPLE OF PATTERN

STITCH KEY

- = chain (ch)
- = slip stitch (sl st)
- = double crochet (dc)