



CROCHET | SKILL LEVEL: EASY

ABBREVIATIONS

Alt = Alternate(ing)
Approx = Approximately
Beg = Beginning
Ch = Chain(s)
Cont = Continue

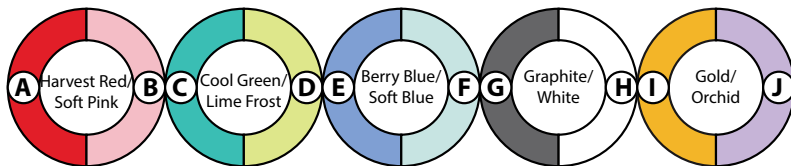
Dc = Double crochet
Pat = Pattern
Rem = Remaining
Rep = Repeat
RS = Right side
Sc = Single crochet

Sp(s) = Space(s)
St(s) = Stitch(es)
Tr = Treble crochet
Yoh = Yarn over hook

MATERIALS

Caron® Simply Soft® O'Go™ (5 oz/141 g; 228 yds/250 m)

Contrast A and B: Harvest Red/Soft Pink (40019)	2 O'Gos
Contrast C and D: Cool Green/Lime (40008)	2 O'Gos
Contrast E and F: Berry Blue/Soft Blue (40025)	2 O'Gos
Contrast G and H: Graphite/White (40027)	2 O'Gos
Contrast I and J: Gold/Orchid (40021)	2 O'Gos



Size U.S. H/8 (5 mm) crochet hook **or size needed to obtain gauge.**
 4" [10 cm] piece of cardboard. Yarn needle.

MEASUREMENTS

Approx 49½" [126 cm] x 64" [162.5 cm], excluding tassels.

GAUGE

13 sts and 10 rows = 4" [10 cm] in pat.

INSTRUCTIONS

Notes:

- To begin working with the O'Go format, carefully cut plastic tie where the ends of the O'Go meet.
- Pull tie to remove.
- For this pattern, colors can be easily separated by gently pulling apart and cutting at the color transition. Each color is ready to use.
- Refer to Materials section for color plan for Contrast A to J.

- Ch 3 at beg of rows counts as dc throughout.
- To change color, work to last 2 loops on hook, yoh with new color. Pull through 2 loops on hook to complete st and proceed in new color.

BLANKET

With A, ch 161 (multiple of 6 ch + 5).

1st row: (RS). With A, 1 sc in 2nd ch from hook. 1 sc in each ch to end of chain. Turn. 160 sts.

2nd row: Ch 3. 1 dc in each sc to end of row. Turn.

3rd row: Ch 1. 1 sc in each of first 4 dc. *Ch 2. Skip next 2 dc. 1 sc in each of next 4 dc. Rep from * to end of row. Turn.

4th row: Ch 3. 1 dc in each of next 3 sc. *Ch 2. Skip next 2 ch. 1 dc in each of next 4 sc. Rep from * to end of row. Break A. Join B. Turn.

5th row: With B, ch 1. 1 sc in each of first 4 dc. *Working in front of ch sps from previous rows, 1 tr in each of next 2 dc 2 rows below. 1 sc in each of next 4 dc. Rep from * to end of row. Turn.

6th row: Ch 3. 1 dc in each st to end of row. Turn.

7th row: As 3rd row.

8th row: As 4th row. Break B. Join A.

Last 4 rows form Pat.

Cont in Pat, alt 4 rows A and 4 rows B until 32 rows in total are complete.

Work 32 rows in Pat, substituting C for A and D for B.

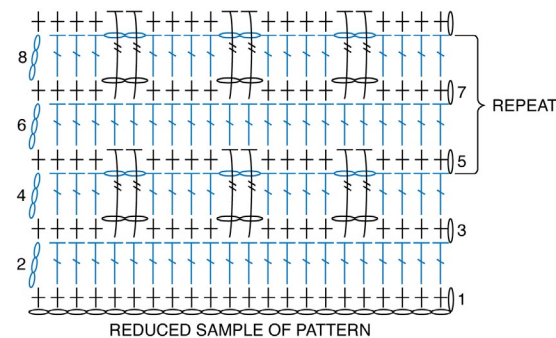
Work 32 rows in Pat, substituting E for A and F for B.

Work 32 rows in Pat, substituting G for A and H for B.

Work 30 rows in Pat, substituting I for A and J for B.

Next row: (RS). With J, ch 1. 1 sc in each st to end of row. Turn.

Next row: Ch 3. 1 dc in each sc to end of row. Fasten off.

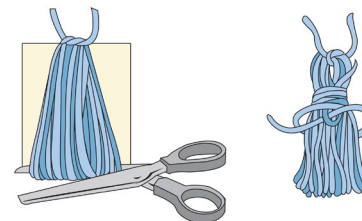


Tassels

Make 3 each in B and I.

Make 2 each in A, C, D, E, F, G, H and J.

Cut a piece of cardboard 4" [10 cm] wide. Wind yarn around cardboard 40 times. Break yarn leaving a long end and thread end through needle. Slip needle through all loops and tie tightly. Remove cardboard and wind yarn tightly around loops 1" [2.5 cm] below fold. Fasten securely. Cut through rem loops and trim ends evenly. Sew 11 Tassels to each side edge of Blanket, matching colors as seen in picture.



STITCH KEY

- = chain (ch)
- ⊥ = single crochet (sc)
- ⌋ = double crochet (dc)
- ⌋⌋ = treble crochet (tr)

