



CROCHET | SKILL LEVEL: INTERMEDIATE

ABBREVIATIONS

Approx =

Approximately

Beg = Beginning

Ch = Chain(s)

Cont = Continue(ity)

Dc = Double Crochet

Dec = Decrease

Rem = Remain(ing)

Rep = Repeat

Rnd = Round

RS = Right Side

Sl st(s) = Slip

Stitch(es)

Sp(s) = Space(s)

St(s) = Stitch(es)

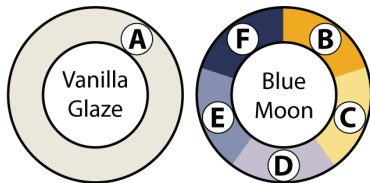
Yoh = Yarn Over Hook

MATERIALS

Caron® Big Donut™ O'Go™ (9.9 oz/280 g; 502 yds/459 m)

Contrast A Vanilla Glaze (290015) **2 O'Gos or 762 yds/697 m**

Blue Moon (29005) **4 O'Gos or 1981 yds/1811 m**



Size U.S. I/9 (5.5 mm) crochet hook **or size needed to obtain gauge.**
Yarn needle.

MEASUREMENTS

Approx 43" x 52" [109 x 132 cm].

GAUGE

12 dc and 7 rows = 4" [10 cm].

INSTRUCTIONS

BLANKET

Notes:

- To begin working with the O'Go format, carefully cut plastic tie where the ends of the O'Go meet.
- Pull tie to remove.
- Colors can be easily separated by gently pulling apart and cutting at the color transition. Each color is ready to use.
- Designate each color A, B, C, D, E, F as indicated in Shade Palette.

- Start crocheting!
- Blanket is worked diagonally from corner to corner.
- When working from Chart, wind small balls of the colors to be used, one for each separate area of color in the design.
- Start new colors at appropriate points. To change color, work to last 2 loops on hook, yoh with new color. Pull through 2 loops on hook to complete st and proceed in new color.

With A, ch 6. See stitch diagram on page 3 and Chart on page 4. Each square of chart represents 1 block.
1st row: (RS). 1 dc in 4th ch from hook (counts as 2 dc). 1 dc in each of last 2 ch. Turn. 1 block made.

2nd row: Ch 6. 1 dc in 4th ch from hook. 1 dc in each of next 2 ch – beg block made. (Sl st. Ch 3. 3 dc) in next ch-3 sp – block made. Turn. 2 blocks.

3rd row: Beg block. *Block in next ch-3 sp. Rep from * to end of row. Turn. 3 blocks.

Keeping cont of color changes in Chart (each square on grid represents 1 block), rep last row until 60th row of chart is complete. 60 blocks.

Keeping cont of Chart, proceed as follows to work sides even:

61st row: Sl st in each of first 3 dc. *Block in next ch-3 sp. Rep from * to end of row. Turn.

62nd row: Beg block. *Block in next ch-3 sp. Rep from * to last ch-3 sp. Sl st in last ch-3 sp. (**Do not** make a block.) Turn.

63rd to 72nd rows: Rep last 2 rows 5 times more.

Keeping cont of Chart, proceed as follows to dec corner:

73rd row: Sl st in each of first 3 dc. *Block in next ch-3 sp. Rep from * to last ch-3 sp. Sl st in last ch-3 sp. (**Do not** make a block.) Turn.

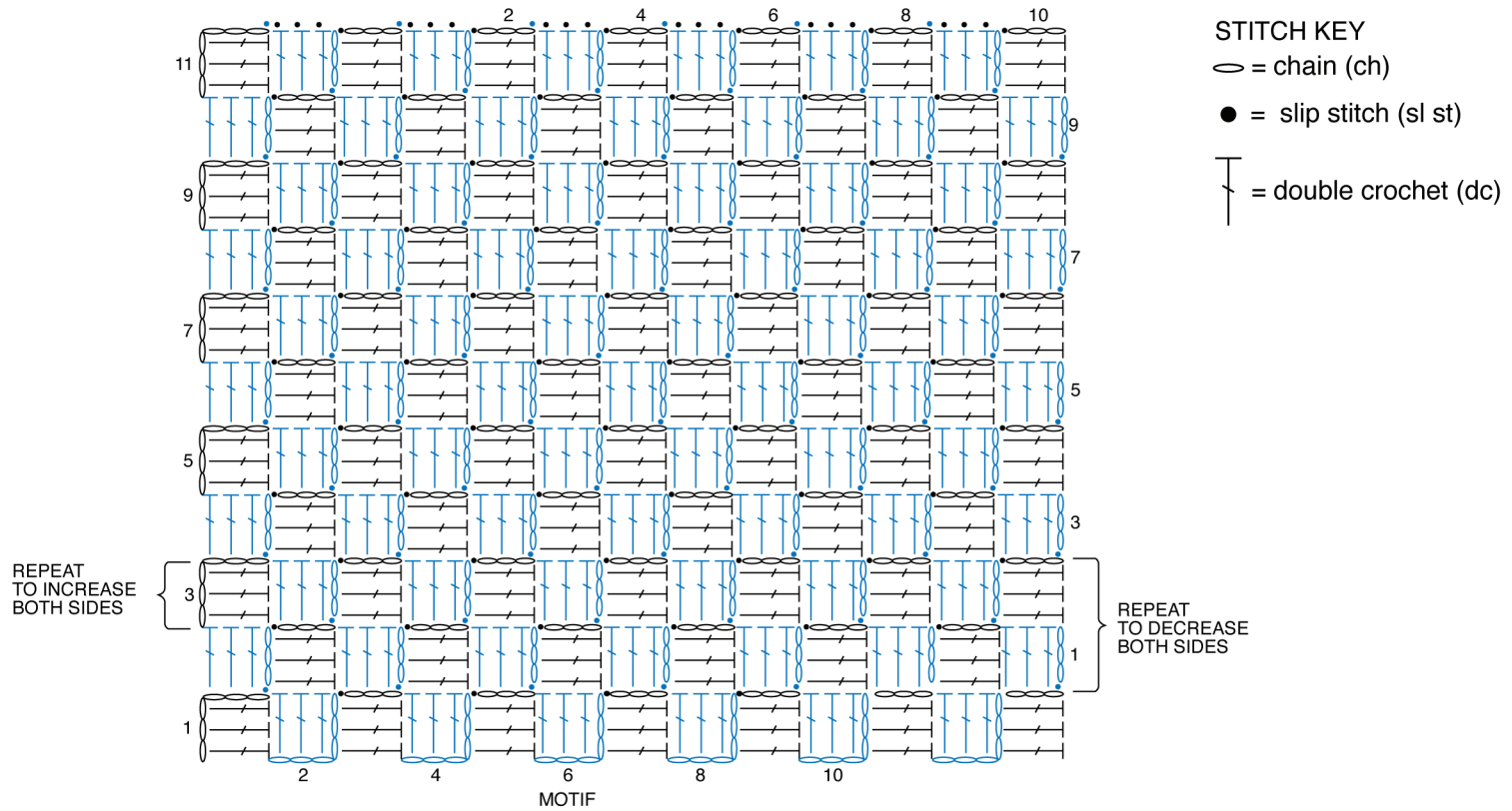
Keeping cont of Chart, rep last row until 1 block rem. Fasten off.

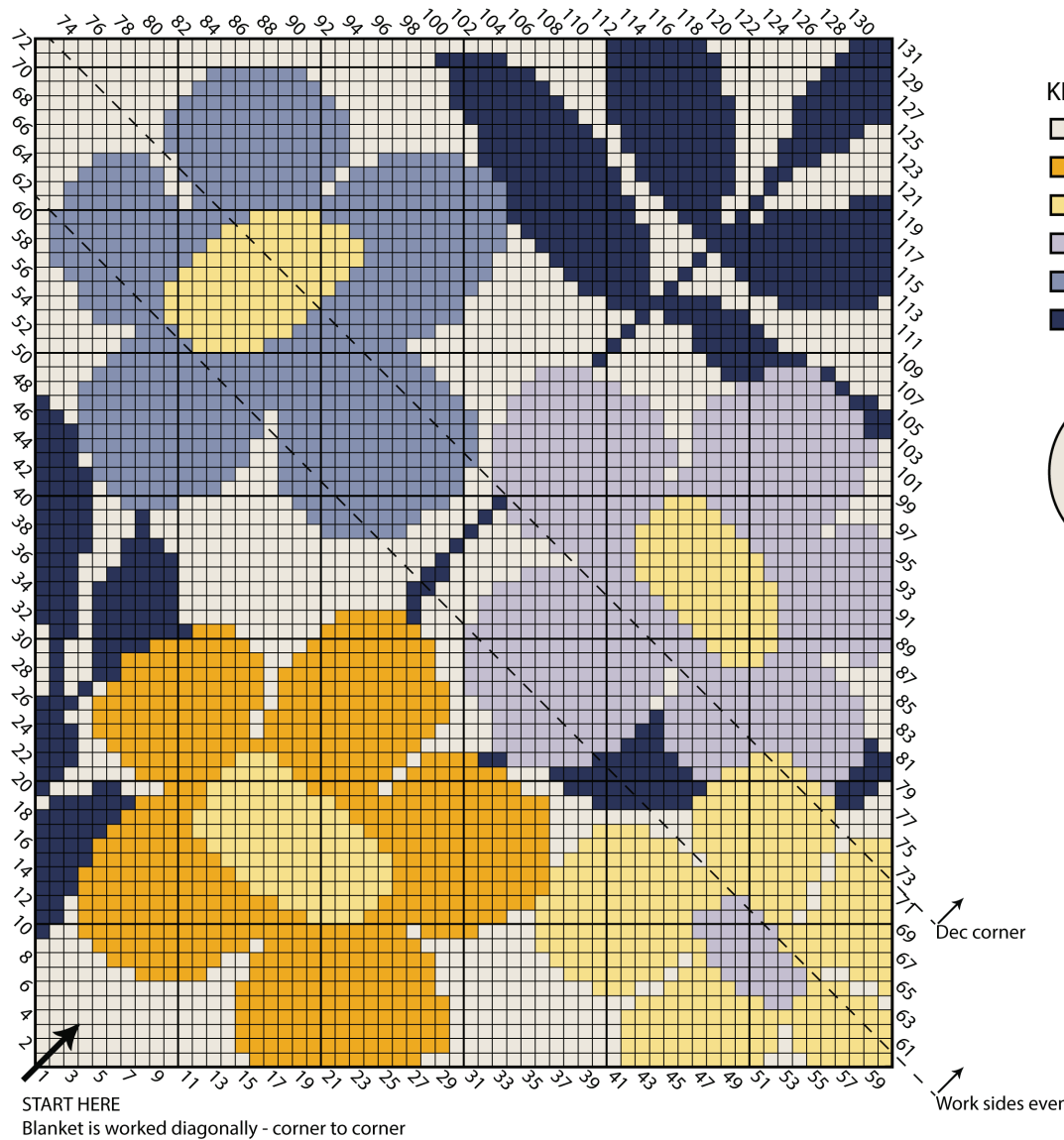
Edging: (RS). Join A with sl st between any 2 blocks along edge.

1st rnd: Ch 3. *Sl st between next 2 blocks. Ch 3. Rep from * around, working (Sl st. Ch 3. Sl st) in each corner. Join with sl st in first sl st. Turn.

2nd rnd: Sl st in next ch-3 sp. Ch 3 (counts as 1 dc). 2 dc in same sp as last sl st. *3 dc in next ch-3 sp. Rep from * around, working (3 dc. Ch 1. 3 dc) in corner ch-3 sp. Join with sl st to top of first ch-3. Fasten off.







KEY

- = Contrast A
- = Contrast B
- = Contrast C
- = Contrast D
- = Contrast E
- = Contrast F

