



CROCHET | SKILL LEVEL: **EASY**

## ABBREVIATIONS

**Approx** = Approximately

**Beg** = Beginning

**Ch** = Chain(s)

**Dc** = Double crochet

**Dcbp** = Yoh and draw up a loop around post of next stitch at back of work, inserting hook from right to left. (Yoh and draw through 2 loops on hook) twice.

**Dcfp** = Yoh and draw up a loop around post of next stitch at front of work, inserting hook from right to left. (Yoh and draw through 2 loops on hook) twice.

**Hdc** = Half double crochet

**Pat** = Pattern

**Popcorn** = Work 4 hdc into next stitch. Drop loop from hook. Insert hook from front to back into first hdc of 4-hdc group. Pull dropped loop through st. Ch 1 to secure popcorn.

**Rem** = Remain(ing)

**Rep** = Repeat

**RS** = Right side

**Sc** = Single crochet

**Sl st** = Slip stitch

**St(s)** = Stitch(es)

**Tr** = Treble crochet

**WS** = Wrong side

**Yoh** = Yarn over hook

## MEASUREMENTS

Approx 50½" x 60" [128.5 x 152.5 cm].

## GAUGE

7 sc and 8 rows = 4" [10 cm].

## INSTRUCTIONS

### Notes:

- To join new color, work to last 2 (3) loops on hook of previous color. Yoh with new color, draw through rem loops and proceed with new color.
- Ch 2 at beg of rows **does not** count as hdc.

## MATERIALS

**Caron® Tea Cakes™** (8.5 oz/240 g; 204 yds/186 m)

**Contrast A** Marine Green (20040) **5 cakes**

**Contrast B** Sunset Stroll (20044) **5 cakes**

Size U.S. L/11 (8 mm) crochet hook **or size needed to obtain gauge.**  
Yarn needle.

With A, ch 87.

**1st row:** (WS). 1 sc in 2nd ch from hook. 1 sc in each sc to end of ch. Turn. 86 sc.

**2nd and 4th rows:** Ch 1. 1 sc in first st. 1 tr in next st. \*1 sc in next st. 1 tr in next st. Rep from \* to end of row. Turn.

**3rd and 5th rows:** Ch 1. 1 sc in first st. 1 tr in next st. \*1 sc in next st. 1 tr in next st. Rep from \* to end of row. Break A. Join B. Turn.

**6th row:** With B, ch 2. 1 hdc in each st to end of row. Turn.

**7th row:** Ch 2. 1 hdc in first hdc. \*1 dcfp around each of next 4 sts. 1 dcbbp around each of next 4 sts. Rep from \* to last 5 sts. 1 dcfp around each of next 4 sts. 1 hdc in last hdc. Turn

**8th row:** Ch 2. 1 hdc in first hdc. \*1 dcbbp around each of next 4 sts. 1 dcfp around each of next 4 sts. Rep from \* to last 5 sts. 1 dcbbp around each of next 4 sts. 1 hdc in last hdc. Turn.

**9th and 10th rows:** As 7th and 8th rows. Break B. Join A.

**11th row:** With A, ch 1. 1 sc in each st to end of row. Turn.

**12 row:** Ch 3 (counts as dc). \*Skip each of next 3 sc. 1 tr in next sc. 1 dc in each of 3 skipped sc behind tr. Rep from \* to last sc. 1 dc in last sc. Turn.

**13th row:** Ch 1. 1 sc in each st to end of row. Turn.

**14th row:** Ch 3 (counts as dc). \*Skip next sc. 1 dc in each of next 3 sc. 1 tr in skipped sc in front of work. Rep from \* to last sc. 1 dc in last sc. Turn.

**15th row:** Ch 1. 1 sc in each st to end of row. Break A. Join B. Turn.

**16th row:** Ch 2. 1 hdc in each of first 2 sc. \*Popcorn in next sc. 1 hdc in each of next 3 sc. Rep from \* to end of row. Turn.

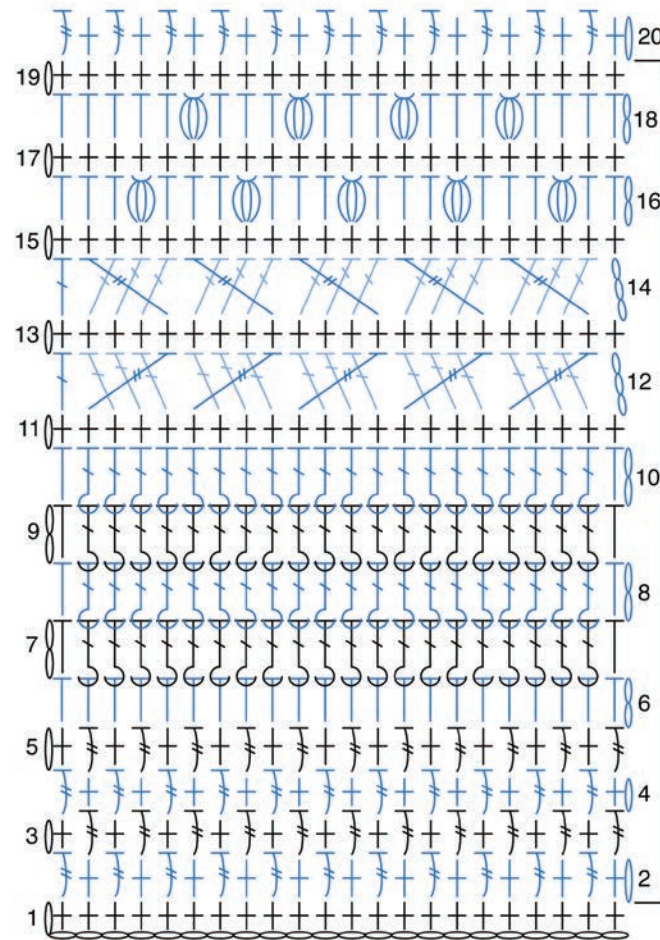
**17th row:** Ch 1. 1 sc in each st to end of row. Turn.

**18th row:** Ch 2. 1 hdc in each of first 4 sc. \*Popcorn in next sc. 1 hdc in each of next 3 sc. Rep from \* to last 2 sc. 1 hdc in each of last 2 hdc. Turn.

**19th row:** Ch 1. 1 sc in each st to end of row. Break B. Join A. Turn.

Rep 2nd to 19th rows until work measures approx 60" [152.5 cm], ending on 19th row. Fasten off.

**Side edging:** With RS facing, join A with sl st to bottom right corner. Ch 2. Work 1 row of hdc evenly up side of Blanket. Fasten off. Rep for other side.



REDUCED SAMPLE OF PATTERN

STITCH KEY

- = chain (ch)
- ⊕ = single crochet (sc)
- ⊥ = half double crochet (hdc)
- ⊥ = double crochet (dc)
- ⊥ = treble crochet (tr)
- ⊥ = front post dc (dcfp)
- ⊥ = back post dc (dcbbp)
- ⊕ = popcorn

REPEAT