



CROCHET | SKILL LEVEL: **EASY**

ABBREVIATIONS

Approx = Approximately
Beg = Begin(ning)(s)
Ch = Chain(s)
Cont = Continu(e)(ity)
Dc = Double crochet
Pat = Pattern
Rep = Repeat(ing)

Rnd = Round
RS = Right side
Sc = Single crochet
Sl st = Slip stitch
St(s) = Stitch(es)
Tog = Together
WS = Wrong side

MEASUREMENT

Approx 51" [129.5 cm] square.

GAUGE

13 sc and 14 rows = 4" [10 cm].

INSTRUCTIONS

Notes: Ch 3 at beg of rows counts as dc.

Work Chart, noting each square of chart is equal to 2 dc and reading RS rows from right to left and WS rows from left to right. Carry color not in use across top of entire previous row and work sts around it. This will ensure even gauge as all sts will be worked around an extra strand of yarn held across top of previous row. Carry both colors up side of work.

MOTIF (make 36)

With MC, ch 36 and begin working chart as described in Notes. Chart is shown on page 2.

1st row: (RS). 1 dc in 4th ch from hook (counts as 2 dc). 1 dc in each ch to end of ch. Turn. 34 dc.

2nd row: Ch 3. 1 dc in each dc to end of row. Turn.

Rep 2nd row and cont working Chart until 17th row of chart is complete. Fasten off.

Assembly

With MC, work 1 row of sc through front loops only to join Motifs tog. Join into 5 Strips, 6 Motifs in each Strip. Work 1 row of sc through front loops only to join Strips tog.

MATERIALS

Caron® Cloud Cake® (8.5 oz/240 g; 760 yds/695 m)

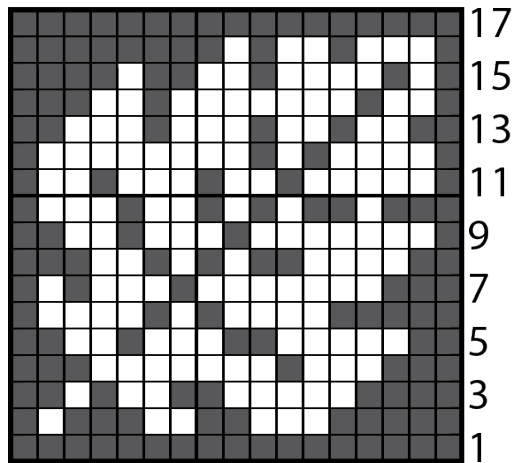
Main Color (MC) Cloud Gray (19006) **2 balls**

Contrast A Kelp (19012) **2 balls**

Size U.S. 7 (4.5 mm) crochet hook **or size needed to obtain gauge.**

Border: With RS facing, join MC with sl st to any corner.

1st rnd: Ch 3 (counts as dc). Work dc evenly around outer edge, working 5 dc in each corner. Join with sl st to top of ch 3. Fasten off.



Note: Each square in chart is equal to 2 dc

Key

■ = MC

□ = Contrast A

