



CROCHET | SKILL LEVEL: INTERMEDIATE

ABBREVIATIONS

Approx =

Approximately

Ch = Chain(s)

Dc = Double crochet

Hdc = Half double
crochet

Mosaic Dc = Working

in front of chain
spaces, work 1 dc in
skipped sc 3 rows
below

Pat = Pattern

Rem = Remaining

Rep = Repeat

Rnd(s) = Round(s)

RS = Right side

Sc = Single crochet

Sl st = Slip stitch

Sp(s) = Space(s)

St(s) = Stitch(es)

Tog = Together

WS = Wrong side

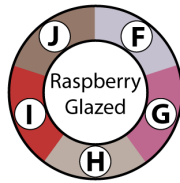
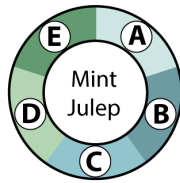
MATERIALS

Caron® Big Donut™ O'Go™ (9.9 oz/280 g; 502 yds/459 m)

Main Color (MC) Fireberry (29012) **4 O'Gos**

Contrast I Mint Julep (29008) **2 O'Gos**

Contrast II Raspberry Glazed (29006) **2 O'Gos**



Size U.S. 1/9 (5.5 mm) crochet hook **or size needed to obtain gauge.**
Yarn needle.

MEASUREMENT

Approx 62" [158 cm] square.

GAUGES

12.5 sc and 13 rows = 4" [10 cm].

1 Motif = 12" [30.5 cm] square.

INSTRUCTIONS

Notes:

- To begin working with the O'Go format, carefully cut plastic tie where the ends of the O'Go meet.

- Pull tie to remove.
- For this pattern, colors can be easily separated by gently pulling apart and cutting at the color transition. Each color is ready to use. Follow color guide shown in Materials section for each O'Go (Contrast A through J). You may find it helpful to place each color section in its own resealable (zip lock) bag and label each bag A through J.

- To change color, work to last 2 loops on hook and draw new color through last 2 loops, then proceed in new color.
- Each Motif is worked with 2 colors only.
- When working dc in rows 3 rows below, work in front of ch-2 spaces, not around.
- Each skipped sc has ch-2 worked above it for 2 rows. This establishes the 'gap' where Mosaic Dc will later be worked
- Mosaic Dc always replaces sc directly behind it on working row
- WS of your work maintains alternating 2-row striped pattern because you are working in front of chain spaces each time you work Mosaic Dc - you are never working around chain-spaces. The chain-spaces are positioned behind Mosaic Dc.

MOTIFS

- Make 2 with A as Color 1 and MC as Color 2.
 Make 2 with B as Color 1 and MC as Color 2.
 Make 2 with C as Color 1 and MC as Color 2.
 Make 3 with D as Color 1 and MC as Color 2.

- Make 3 with E as Color 1 and MC as Color 2.
 Make 3 with F as Color 1 and MC as Color 2.
 Make 3 with G as Color 1 and MC as Color 2.
 Make 2 with H as Color 1 and MC as Color 2.
 Make 3 with I as Color 1 and MC as Color 2.
 Make 2 with J as Color 1 and MC as Color 2.

Motif Instructions

With Color 1, ch 4. Join with sl st to form a ring. (See diagram on page 5).

1st rnd: Ch 3 (counts as dc). 2 dc in ring. (Ch 2. 3 dc) 3 times in ring. Join with 1 hdc in top of first dc. 12 dc.

2nd rnd: Ch 1. 1 sc around post of joining hdc. 1 sc in same sp as joining hdc. 1 sc in each of next 2 dc. * (1 sc. Ch 2. 1 sc) in next ch-2 sp. 1 sc in each of next 3 dc. Rep from * around. 1 sc around post of joining hdc. Join with 1 hdc in top of first sc. Join Color 2, **Do not** break Color 1.

3rd rnd: With Color 2, ch 1. 1 sc around post of joining hdc. 1 sc in same sp as joining hdc. 1 sc in next sc. *Ch 2. Skip next sc. 1 sc in each of next 2 sc.** (1 sc. Ch 2. 1 sc) in next ch-2 sp. 1 sc in each of next 2 sc. Rep from * twice more, then from * to ** once. 1 sc around post of joining hdc. Join with 1 hdc in top of first sc.

4th rnd: Ch 1. 1 sc around post of joining hdc. 1 sc in same sp as joining hdc. 1 sc in each of next 2 sc. *Ch 2. Skip next ch-2 sp. 1 sc in each of next 3 sc.** (1 sc. Ch 2. 1 sc) in next ch-2 sp. 1 sc in each of next 3 sc. Rep from * twice more, then from * to ** once. 1 sc around post of joining hdc. Join with 1 hdc in top of first sc. Join Color 1,

5th rnd: With Color 1, ch 1. 1 sc around post of joining hdc. 1 sc in same sp as joining hdc. *Ch 2. Skip next st. 1 sc in each of next 2 sc. Working in front of Color 2, Mosaic Dc. Skip next ch-2 sp. 1 sc in each of next 2 sc. Ch 2. Skip next sc. 1 sc in next sc.** (1 sc. Ch 2. 1 sc) in next ch-2 sp. 1 sc in next sc. Rep from * twice more, then from * to ** once. 1 sc around post of joining hdc. Join with 1 hdc in top of first sc.

6th rnd: Ch 1. 1 sc around post of joining hdc. 1 sc in same sp as joining hdc. 1 sc in next sc. *Ch 2. Skip next ch-2 sp. 1 sc in each of next 5 sts. Ch 2. Skip next ch-2 sp. 1 sc in each of next 2 sc.** (1 sc. Ch 2. 1 sc) in next ch-2 sp. 1 sc in each of next 2 sc. Rep from * twice more, then from * to ** once. 1 sc around post of joining hdc. Join with 1 hdc in top of first sc. Join Color 2,

7th rnd: With Color 2, ch 1. 1 sc around post of joining hdc. Ch 2. Skip first sc. 1 sc in each of next 2 sc. [*Working in front of Color 1, Mosaic Dc. Skip next ch-2 sp. Ch 2. Skip next sc. 1 sc in each of next 3 sc. Ch 2. Skip next sc. Working in front of Color 1, Mosaic Dc. Skip next ch-2 sp. 1 sc in each of next 2 sc. Ch 2. Skip next sc.** (1 sc. Ch 2. 1 sc) in next ch-2 sp. Ch 2. Skip next sc. 1 sc in each of next 2 sc.] 3 times. Rep from * to ** to end of rnd. 1 sc around post of joining hdc. Join with 1 hdc in top of first sc.

8th rnd: Ch 1. 1 sc around post of joining hdc. 1 sc in same sp as joining hdc. [*Ch 2. Skip next ch-2 sp. 1 sc in each of next 3 sts. Rep from * to last ch-2 sp and sc before corner ch-2 sp. Ch 2. Skip next ch-2 sp. 1 sc in next sc.** (1 sc. Ch 2. 1 sc) in corner ch-2 sp. 1 sc in next sc] 3 times. Rep from * to ** 1 sc around post of joining hdc. Join with 1 hdc in top of first sc. Join Color 1.

9th rnd: With Color 1, ch 1. 1 sc around post of joining hdc. 1 sc in same sp as joining hdc. 1 sc in next sc. [*Working in front of Color 2, Mosaic Dc. Skip next ch-2 sp. Ch 2. Skip next sc. 1 sc in each of next 2 sts. Working in front of Color 2, Mosaic Dc. Skip next ch-2 sp. Ch 2. Skip next sc. 1 sc in next sc. (Ch 2. Skip next sc. Working in front of Color 2, Mosaic Dc. Skip next ch-2 sp. 1 sc in each of next 2 sts) twice. 1 sc in each of next 2 sc.** (1 sc. Ch 2. 1 sc) in corner ch-2 sp. 1 sc in each of next 2 sc] 3 times. Rep from * to **. 1 sc around post of joining hdc. Join with 1 hdc in top of first sc.

10th rnd: Ch 1. 1 sc around post of joining hdc. 1 sc in same sp as joining hdc. 1 sc in each of next 3 sts. [*Ch 2. Skip next ch-2 sp. 1 sc in each of next 3 sts. Ch 2. Skip next ch-2 sp. 1 sc in next sc) twice. 1 sc in each of next 3 sc.** (1 sc. Ch 2. 1 sc) in next ch-2 sp. 1 sc in each of next 4 sts] 3 times. Rep from * to ** to end of rnd. 1 sc around post of joining hdc. Join with 1 hdc in top of first sc. Join Color 2.

11th rnd: With Color 2, ch 1. 1 sc around post of joining hdc. 1 sc in same sp as joining hdc. 1 sc in next sc. [*Ch 2. Skip next sc. 1 sc in each of next 2 sc. Working in front of Color 1, Mosaic Dc. Skip next ch-2 sp) twice. Ch 2. Skip next sc. (Working in front of Color 1, Mosaic Dc. Skip next ch-2 sp. 1 sc in each of next 2 sts. Ch 2. Skip next sc) twice. 1 sc in each of next 2 sc.** (1 sc. Ch 2. 1 sc) in next ch-2 sp. 1 sc in each of next 2 sc] 3 times. Rep from * to ** to end of row. 1 sc around post of joining hdc. Join with 1 hdc in top of first sc.

12th rnd: Ch 1. 1 sc around post of joining hdc. 1 sc in same sp as joining hdc. 1 sc in each of next 2 sc. [*Ch 2. Skip next ch-2 sp. 1 sc in each of next 3 sts. Rep from * to corner ch-2 sp.** (1 sc. Ch 2. 1 sc) in next ch-2 sp. 1 sc in each of next 3 sc] 3 times. Rep from * to ** to end of rnd. 1 sc around post of joining hdc. Join with 1 hdc in top of first sc. Join Color 1.

13th rnd: With Color 1, ch 1. 1 sc around post of joining hdc. 1 sc in same sp as joining hdc. [Ch 2. Skip next sc. *(1 sc in each of next 2 sc. Working in front of Color 2, Mosaic Dc. Skip next ch-2 sp. Ch 2. Skip next sc) twice. 1 sc in each of next 2 sc. Working in front of Color 2, Mosaic Dc. Skip next ch-2 sp. 1 sc in each of next 2 sc. (Ch 2. Skip next sc. Working in front of Color 2, Mosaic Dc. Skip next ch-2 sp. 1 sc in each of next 2 sc) twice. Ch 2. Skip next sc. 1 sc in next sc.** (1 sc. Ch 2. 1 sc) in next ch-2 sp. 1 sc in next sc] 3 times. Rep from * to **. 1 sc around post of joining hdc. Join with 1 hdc in top of first sc.

14th rnd: Ch 1. 1 sc around post of joining hdc. 1 sc in same sp as joining hdc. 1 sc in next sc. [*Ch 2. Skip next ch-2 sp. 1 sc in each of next 3 sts) twice. Ch 2. Skip next ch-2 sp. 1 sc in each of next 5 sts. (Ch 2. Skip next ch-2 sp. 1 sc in each of next 3 sts) twice. Ch 2. Skip next ch-2 sp. 1 sc in each of next 2 sts.** (1 sc. Ch 2. 1 sc) in next ch-2 sp. 1 sc in each of next 2 sc] 3 times. Rep from * to **. 1 sc around post of joining hdc. Join with 1 hdc in top of first sc. Join Color 2.

15th rnd: With Color 2, ch 1. 1 sc around post of joining hdc. [*Ch 2. Skip next sc. 1 sc in each of next 2 sc. Working in front of Color 1, Mosaic Dc. Skip next ch-2 sp) 3 times. Ch 2. Skip next sc. 1 sc in each of next 3 sc. (Ch 2. Skip next sc. Working in front of Color 1, Mosaic Dc. Skip next ch-2 sp. 1 sc in each of next 2 sc) 3 times. Ch 2. Skip next sc.** (1 sc. Ch 2. 1 sc) in next ch-2 sp] 3 times. Rep from * to **. 1 sc around post of joining hdc. Join with 1 hdc in top of first sc.

16th rnd: Ch 1. 1 sc around post of joining hdc. 1 sc in same sp as joining hdc. [*Ch 2. Skip next ch-2 sp. 1 sc in each of next 3 sts) 7 times. Ch 2. Skip next ch-2 sp.. 1 sc in next sc.** (1 sc. Ch 2. 1 sc) in next ch-2 sp. 1 sc in next sc] 3 times. Rep from * to **. 1 sc around post of joining hdc. Join with 1 hdc in top of first sc. Join Color 1.

17th rnd: With Color 1, ch 1. 1 sc around post of joining hdc. 1 sc in same sp as joining hdc. [*Ch 2. Skip next sc. (Working in front of Color 2, Mosaic Dc. Skip next ch-2 sp. Ch 2. Skip next sc. 1 sc in each of next 2 sc) 3 times. Working in front of Color 2, Mosaic Dc. Skip next ch-2 sp. Ch 2. Skip next sc. 1 sc in next sc. (Ch 2. Skip next sc. Working in front of Color 2, Mosaic Dc. Skip next ch-2 sp. 1 sc in each of next 2 sts) 3 times. Ch 2. Skip next sc. Working in front of Color 2, Mosaic Dc. Skip next ch-2 sp. Ch 2. Skip next sc. 1 sc in each of next 2 sts) 3 times. Rep from * to **. 1 sc around post of joining hdc. Join with 1 hdc in top of first sc.

18th rnd: Ch 1. 1 sc around post of joining hdc. 1 sc in same sp as joining hdc. 1 sc in next sc. [*Ch 2. Skip next ch-2 sp. 1 sc in next st. (Ch 2. Skip next ch-2 sp. 1 sc in each of next 3 sts) 3 times. Ch 2. Skip next ch-2 sp. 1 sc in next sc. (Ch 2. Skip next ch-2 sp. 1 sc in each of next 3 sts) 3 times. (Ch 2. Skip next ch-2 sp. 1 sc in next st) twice. 1 sc in next sc.** (1 sc. Ch 2. 1 sc) in next ch-2 sp. 1 sc in next sc] 3 times. Rep from * to **. 1 sc around post of joining hdc. Join with 1 hdc in top of first sc. Join Color 2.

19th rnd: With Color 2, ch 1. 1 sc around post of joining hdc. 1 sc in same sp as joining hdc. 1 sc in each of next 2 sc. [*Working in front of Color 1, Mosaic Dc. Skip next ch-2 sp. 1 sc in next sc. (Working in front of Color 1, Mosaic Dc. Skip next ch-2 sp. 1 sc in each of next 3 sts) 3 times. Rep from * once more. Working in front of Color 1, Mosaic Dc. Skip next ch-2 sp. 1 sc in next sc. Working in front of Color 1, Mosaic Dc. Skip next ch-2 sp. 1 sc in each of next 3 sc.** (1 sc. Ch 2. 1 sc) in next ch-2 sp. 1 sc in each of next 3 sc] 3 times. Rep from * to **. 1 sc around post of joining hdc. Ch 2. Join with sl st to first sc. Fasten off.

FINISHING

Following Assembly Diagram, join 5 Motifs tog into each Strip as follows:

With RS facing each other, join MC with sl st to corner ch-2 sp. Working through both thicknesses, work 1 sc in each st to next ch-2 sp. Fasten off.

Join 5 Strips into Blanket as follows: With RS facing each other, join MC with sl st to corner ch-2 sp. Working through both thicknesses, work evenly in sc across Strip to next corner ch-2 sp. Fasten off.

Border

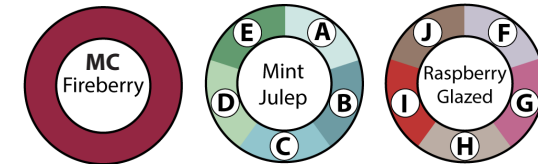
With RS facing, join MC with sl st to any corner ch-2 sp.

1st rnd: Ch 2 (**does not** count as st). 2 hdc in same sp as sl st. 1 hdc in each st around, working (2 hdc. Ch 2. 2 hdc) in corner ch-2 sps. Join with hdc in top of first hdc.

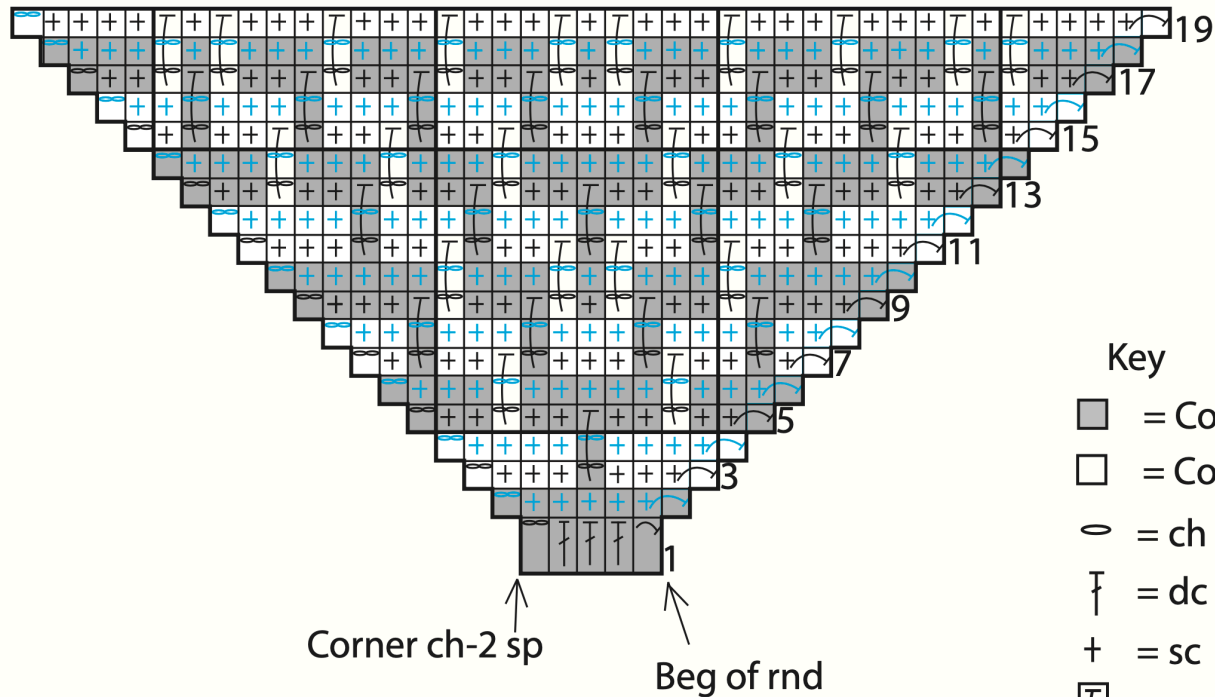
2nd and 3rd rnds: Ch 2. 2 hdc around post of joining hdc. 1 hdc in same sp as joining hdc and each hdc around, working (2 hdc. Ch 2. 2 hdc) in corner ch-2 sps. Join with hdc in top of first hdc. Fasten off.



ASSEMBLY DIAGRAM



MOTIF DIAGRAM



Key

- = Color 1
- = Color 2
- = ch
- ⌈ = dc
- + = sc
- ⌈
⌈
⌈ = 1 dc in next sc
3 rows below
- ↪ = Joining hdc

Note: Only ¼ of Motif is shown.
Rem 3 sections of Motif will repeat this diagram.