



CROCHET | SKILL LEVEL: **EASY**

ABBREVIATIONS

Approx = Approximately

Beg = Begin(ning)

Ch = Chain(s)

Dc = Double crochet

Pat = Pattern

Rep = Repeat

RS = Right side

Sl st = Slip stitch

St(s) = Stitch(es)

Tog = Together

MEASUREMENTS

Approx 46½" x 56" [118 x 142 cm], excluding fringe.

GAUGE

15 dc and 8 rows = 4" [10 cm] in pattern.

INSTRUCTIONS

Note: Ch 3 at beg of rows and skipped ch 3 count as dc throughout.

Ch 320 (multiple of 53 ch + 2), marking every 50th chain for easier counting. See diagram on page 2.

1st row: (RS). 1 dc in 4th ch from hook. 1 dc in each of next 2 ch. Ch 3. Sl st in next ch. *Skip next 3 ch. 1 dc in each of next 3 ch. Ch 3.

Sl st in next ch. Skip next 3 ch. 1 dc in each of next 2 ch. Ch 3. Sl st in next ch. Skip next 3 ch. 1 dc in next ch. Ch 3. Slip st in next ch. Skip next 3 ch. (1 dc in next ch. Skip next 2 ch. Sl st in next ch. Ch 3. Skip next ch) twice. 1 dc in each of next 2 ch. Skip next 2 ch. Sl st in next ch. Ch 3. Skip next ch. 1 dc in each of next 3 ch. Skip next 2 ch. Sl st in next ch. Ch 3. Skip next ch. ***1 dc in each of next 8 ch. Ch 3. Sl st in next ch.** Rep from * to ** 4 times more, then from * to *** once. 1 dc in each of last 4 ch. 174 dc. Turn.

2nd row: Ch 3. 1 dc in each of next 3 dc. Ch 3. Sl st in top of ch-3. *1 dc in each of next 3 dc. Ch 3. Sl st in top of ch-3. 1 dc in each of next 2 dc. Ch 3. Sl st in top of ch-3. 1 dc in next dc. Ch 3. Sl st in top of ch-3.

MATERIALS

Caron® Cotton Cakes™ (8.8 oz/250 g; 530 yds/485 m)

Hydrangea (57020)

5 balls or 2375 yds/2170 m

Size U.S. 7 (4.5 mm) crochet hook **or size needed to obtain gauge.**

1 dc in next dc. Sl st in top of ch-3. Ch 3. 1 dc in next dc. Sl st in top of ch-3. Ch 3. 1 dc in each of next 2 dc. Sl st in top of ch-3. Ch 3. 1 dc in each of next 3 dc. Sl st in top of ch-3. Ch 3. ***1 dc in each of next 8 dc. Ch 3. Sl st in top of ch-3. ** Rep from * to ** 4 times more, then * to *** once. 1 dc in each of last 4 dc. Turn.

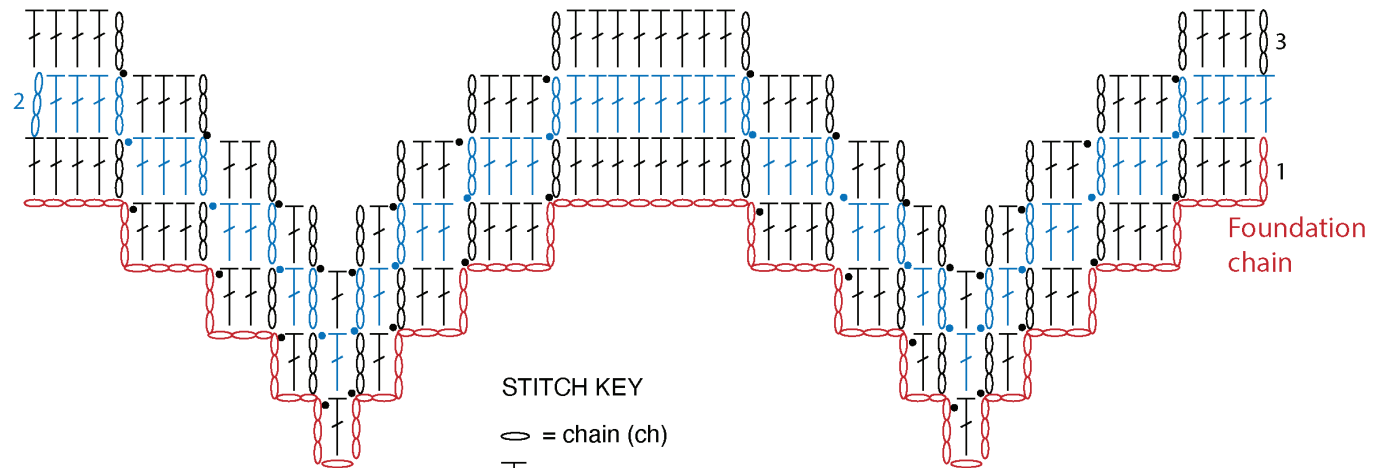
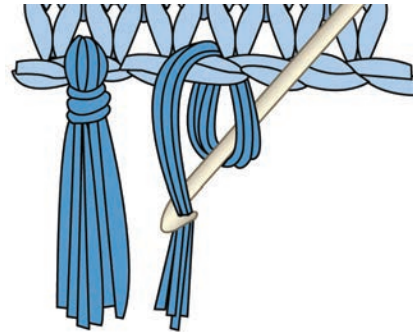
3rd row: Working in back loops only, as 2nd row.

4th row: Working in both loops, as 2nd row.

Rep 2nd and 3rd rows for pat until work from beg measures approx 56" [142 cm], ending on a 4th row. Fasten off.

Side borders: (RS). Join yarn with sl st to top left corner of Blanket. Ch 1. Work sc evenly down left side of Blanket. Fasten off. Rep for opposite side.

Fringe: Cut lengths of yarn 20" [51 cm] long. Taking 2 strands tog, knot into fringe at top and bottom of blanket. Trim fringe evenly.



STITCH KEY

○ = chain (ch)

┆ = double crochet (dc)

• = slip stitch (sl st)