



CROCHET | SKILL LEVEL: **EASY**

ABBREVIATIONS

Approx = Approximately

Beg = Begin(ning)

Ch = Chain(s)

Dc = Double crochet

Hdc = Half double crochet

Rep = Repeat

Rnd(s) = Round(s)

RS = Right side

Sl st = Slip stitch

Sp(s) = Space(s)

Tog = Together

WS = Wrong side

MEASUREMENT

Approx 64" [162.5 cm] square.

GAUGE

13 dc and 7 rows = 4" [10 cm].

Motif = 8" [20.5 cm] square.

INSTRUCTIONS

Note: Join all rnds with sl st to 3rd ch of ch 5.

Solid Motif (make 52 in MC and 4 in A). See diagram on page 2.

Ch 4. Join with sl st to first ch to form ring.

1st rnd: Ch 5 (counts as dc and ch 2). (3 dc in ring. Ch 2) 3 times. 2 dc in ring. Join.

2nd rnd: Sl st in next ch-2 sp. Ch 5 (counts as dc and ch 2). *2 dc in same sp. 1 dc in each dc to next ch-2 sp. 2 dc in ch-2 sp. Ch 2. Rep from * twice more. 2 dc in same sp. 1 dc in each dc to next ch-2 sp. 1 dc in same sp as ch 5. Join.

3rd to 7th rnds: Sl st in next ch-2 sp. Ch 5 (counts as dc and ch 2). *2 dc in same sp. 1 dc in each dc to next ch-2 sp. 2 dc in ch-2 sp. Ch 2. Rep from * twice more. 2 dc in same sp. 1 dc in each dc to next ch-2 sp. 1 dc in same sp as ch 5. Join.

Fasten off.

MATERIALS

Caron® Marble Cakes™ (8.5 oz/240 g; 404 yds/369 m)

Main Color (MC) Rosewater Plum (21003) **7 balls**

Contrast A French Vanilla (21012) **2 balls**

Size U.S. H/8 (5 mm) crochet hook **or size needed to obtain gauge.**
Tapestry needle.

Two Color Motif (make 8)

With MC, ch 3. Join with sl st to first ch to form ring.

1st rnd: (RS). Ch 3. (2 dc. Ch 2. 3 dc) in ring. Ch 1. Drop MC. With A, ch 1. (3 dc. Ch 3. 3 dc) in ring. Ch 1. Join with hdc to top of beg ch-3. Turn.

2nd rnd: (WS). With A, ch 3. 1 dc in beg sp created by ch-1 and hdc at end of last rnd (beg sp). *1 dc in each dc to corner ch-2 sp. (2 dc. Ch 2. 2 dc) all in ch-2 sp. 1 dc in each dc to corner ch-2 sp.* 2 dc in next ch-2 sp. Ch 1. Drop A. With MC, ch 1. 2 dc in same ch-2 sp. Rep from * to * once more. 2 dc in beg sp. Ch 1. Join with hdc to top of beg ch-3. Turn.

3rd rnd: (RS). With Color 1, ch 3. 1 dc in beg sp. *1 dc in each dc to corner ch-2 sp. (2 dc. Ch 2. 2 dc) all in ch-2 sp. 1 dc in each dc to corner ch-2 sp.* 2 dc in ch-2 sp. Ch 1. Drop Color 1. With Color 2, ch 1. 2 dc in same ch-2 sp. Rep from * to * once more. 2 dc in beg sp. Ch 1. Join with hdc to top of beg ch-3. Turn.

4th and 6th rnds: As 2nd rnd.

5th and 7th rnds: As 3rd rnd.

Fasten off.

Assembly

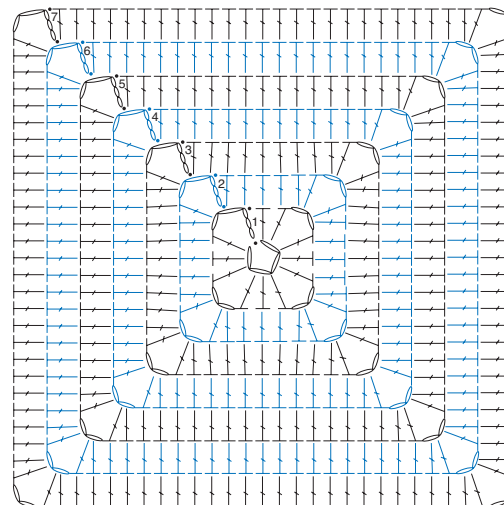
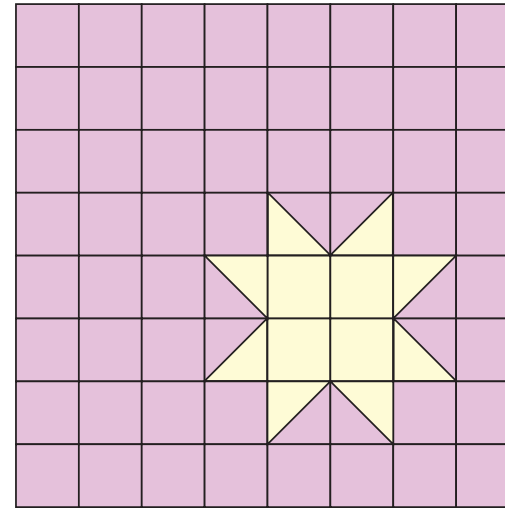
Sew Motifs tog into 8 Strips, with 8 Motifs in each Strip (see assembly diagram). Sew Strips tog.

Edging

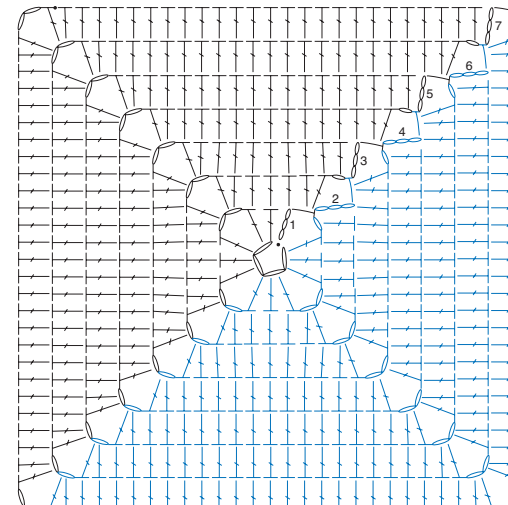
1st rnd: (RS). Join A with sl st to any corner ch-2 sp. (1 sc. Ch 2. 1 sc) in ch-2 sp. Work sc evenly around Blanket having (1 sc. Ch 2. 1 sc) in each corner. Join.

Fasten off.

Assembly Diagram



SOLID COLOR MOTIF



TWO COLOR MOTIF

STITCH KEY

- = chain (ch)
- = slip stitch (sl st)
- ┆ = half double crochet (hdc)
- ┆ = double crochet (dc)