



CROCHET | SKILL LEVEL: **EASY**

ABBREVIATIONS

Approx = Approximately

Beg = Beginning

Ch = Chain(s)

Cont = Continue(ity)

Dc = Double crochet

Hdc = Half double crochet

Pat = Pattern

Rep = Repeat

RS = Right side

Sc = Single crochet

Spike St = Insert hook in row indicated and draw up a long loop. Yoh and draw through both loops on hook.

St(s) = Stitch(es)

Yoh = Yarn over hook

MEASUREMENTS

Approx 49" x 60" [124.5 x 152.5 cm].

Ch 112 (multiple of 10 ch + 2). See diagram on page 2.

GAUGES

8 sc and 9 rows = 4" [10 cm].

9 sts and 9 rows = 4" [10 cm] in pat.

Foundation row: (RS). 1 sc in 2nd ch from hook. 1 sc in each ch to end of chain. Turn. 111 sc.

INSTRUCTIONS

Notes

- To maintain consistent color changes, join new ball of yarn to match last color change of previous ball. This will help to ensure stripe repeat will match as closely as possible.
- Ch 3 at beg of row counts as dc.

1st and 2nd rows: Ch 1. 1 sc in first st. *1 sc in next st. 1 hdc in next st. 1 dc in each of next 5 sts. 1 hdc in next st. 1 sc in next st.** Ch 1. Skip next st. Rep from * 9 times more, then from * to ** once. 1 sc in last st. Turn.

3rd row: Ch 1. 1 sc in each of first 10 sts. *Spike st in next sc 3 rows below. 1 sc in each of next 9 sts. Rep from * to last st. 1 sc in last st. Turn.

MATERIALS

Caron® Anniversary Cakes™ (35.3 oz/1000 g; 1061 yds/970 m)

Blueberry Birthday (20002)

2 balls

Size U.S. L/11 (8 mm) crochet hook **or size needed to obtain gauge.**

4th row: Ch 1. 1 sc in each st across. Turn.

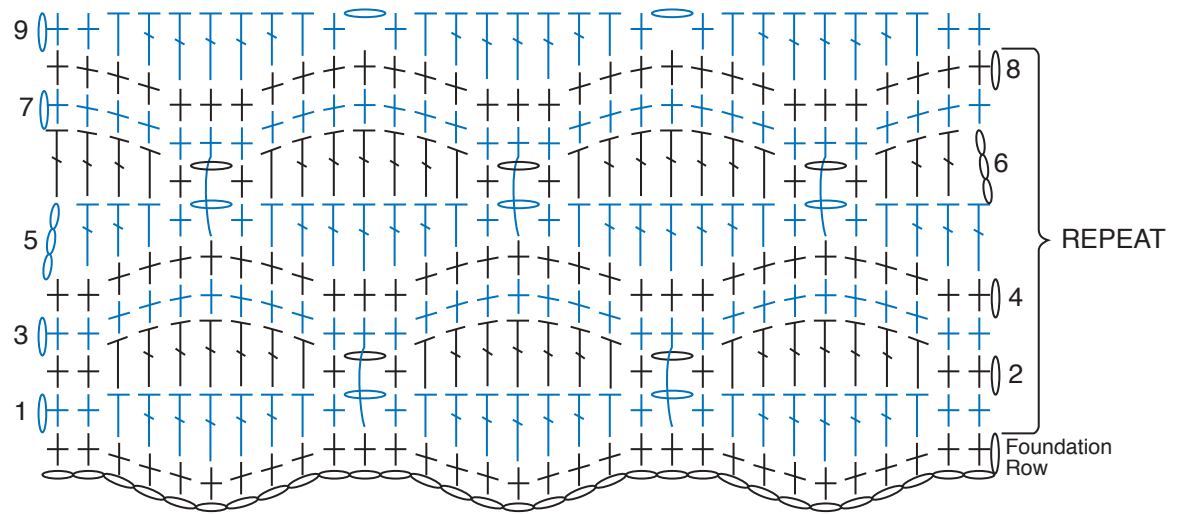
5th and 6th rows: Ch 3. 1 dc in each of next 2 sts. *1 hdc in next st. 1 sc in next st. Ch 1. Skip next st. 1 sc in next st. 1 hdc in next st.** 1 dc in each of next 5 sts. Rep from * 9 times more, then from * to ** once. 1 dc in each of next 3 sts. Turn.

7th row: Ch 1. 1 sc in each of first 5 sts. *Spike st in next sc 3 rows below.** 1 sc in each of next 9 sts. Rep from * 9 times more, then from * to ** once. 1 sc in each of next 5 sts. Turn.

8th row: As 4th row.

Last 8 rows form pat.

Cont in pat until work from beg measures approx 60" [152.5 cm], ending on a 4th or 8th row. Fasten off.



REDUCED SAMPLE OF PATTERN

STITCH KEY

- = chain (ch)
- ⊕ = single crochet (sc)
- ┆ = half double crochet (hdc)
- ┆ = double crochet (dc)
- ⋈ = spike stitch (spike st)