



Mikey  
from The Crochet Crowd



CROCHET | SKILL LEVEL: **INTERMEDIATE**

### ABBREVIATIONS

**Approx** = Approximately

**Beg** = Beginning

**Ch** = Chain(s)

**Dc** = Double crochet

**Hdc** = Half double crochet

**Picot** = Ch 3. Sl st back in top of last sc

**Popcorn** = 4 dc in same stitch.

Drop loop on hook, insert hook in top of 1st st from front to back.

Pick up loop and pull through.

**Rep** = Repeat

**Rnd(s)** = Round(s)

**RS** = Right side

**Sc** = Single crochet

**Sc2tog** = Draw up a loop in each of next 2 sc. Yoh and draw through all 3 loops on hook

**Sl st** = Slip stitch

**Sp(s)** = Space(s)

**St(s)** = Stitch(es)

**Surface Scale st** = 5 dc down first post of V-st. Ch 1. 5 dc up second post of the same V-st

**Tog** = Together

**Yoh** = Yarn over hook

### MATERIALS

**Caron® Simply Soft®** (6 oz/170.1 g; 315 yds/288 m)

**Contrast A** Sunshine (39755) **3 balls**

**Contrast B** Burgundy (39762) **4 balls**

**Contrast C** Off White (39702) **4 balls**

**Contrast D** Sage (39705) **2 balls**

**Contrast E** Dark Sage (39707) **5 balls**

Size U.S. H/8 (5 mm) crochet hook **or size needed to obtain gauge.**

### MEASUREMENT

Approx 58" [147.5 cm] square.

### GAUGE

13 sc and 14 rows = 4" [10 cm].  
Large Motif = 13½" [34.5 cm] between straight edges.

## INSTRUCTIONS

**Note:** The motifs are created in two stages. The base motif is completed below. The leaves are completed with the scale stitch and are applied to the motif afterwards in stage 2. Rnds 6, 7 and 8 are the foundation rounds for the scale stitches.

### Wreath Motif (Make 16) Base motif



**Notes:** Ch 3 at beg of rnd counts as dc.  
Ch 4 at beg of rnd counts as dc and ch 1.

With A ch 3. See Chart I on page 7.

**1st rnd:** 16 dc in 3rd ch from hook. Join with sl st to first dc. Fasten off A. 16 dc.

**2nd rnd:** Join B with sl st to first dc. Ch 4. Popcorn in next dc. \*Ch 1. 1 dc in next dc. Ch 1. Popcorn in next dc. Rep from \* 6 times more. Ch 1. Join with sl st to 3rd ch of beg ch-4. 16 sts. 16 ch-1 sps.

**3rd rnd:** Ch 1. 1 sc in same sp as sl st. 2 sc in each of next 2 ch-1 sps. \*1 sc in next dc. 2 sc in each of next 2 ch-1 sps. Rep from \* 6 times more. Join with sl st to first sc. Fasten off B. 40 sc.

**4th rnd:** Join C with sl st to first sc. Ch 3. 1 dc in each sc around. Join with sl st to top of ch 3. Fasten off C.

**5th rnd:** Join D with sl st to first dc. Ch 1. (1 sc. Ch 1. 1 sc) in same sp as last sl st. 1 sc in each of next 4 dc. \*(1 sc. Ch 1. 1 sc) in next dc. 1 sc in each of next 4 dc. Rep from \* 6 times more. Join with sl st to first sc. 48 sc and 8 ch-1 sps.

**6th rnd:** Sl st to next ch-1 sp. Ch 4. 1 dc in same sp as last sl st – beg V-st made. Skip next sc. (1 dc. Ch 1. 1 dc) in next sc - V-st made. Skip next 2 sc. V-st in next sc.

Skip next sc. \*V-st in next ch-1 sp. Skip next sc. V-st in the next sc. Skip next 2 sc. V-st in next sc. Skip next sc. Rep from \* 6 times more. Join with sl st to 3rd ch of ch-4. 24 V-sts.

**7th rnd:** Sl st in next ch-1 sp. Beg V-st. (V-st between next 2 V-sts) 3 times. \*V-st in next corner ch-1 sp. (V-st between next 2 V-sts) 3 times. Rep from \* 6 times more. Join with sl st to 3rd ch of ch-4. 24 V-sts.

**8th rnd:** Sl st to next ch-1 sp. Beg V-st. (V-st between next 2 V-sts) 4 times. \*V-st in next corner ch-1 sp. (V-st between next 2 V-sts) 4 times. Rep from \* 6 times more. Join with sl st to 3rd ch of ch-4. Fasten off D. 40 V-sts.

**9th rnd:** Join B with sl st to any corner ch-1 sp. Beg V-st. (3 dc in next ch 1 sp) 4 times. \*V-st in next corner ch-1 sp. (3 dc in next ch-1 sp) 4 times. Rep from \* 6 times more. Join with sl st to 3rd ch of ch 4. Fasten off B. 14 dc between corner ch-1 sps.

**Note:** Do not skip first dc after corner V-st in 10th rnd.

**10th rnd:** Join A with sl st to corner ch-1 sp. Ch 1. (1 sc. Ch 1. 1 sc) in same sp as sl st. 1 sc in each of next 6 dc. Sc2tog. 1 sc in each of next 6 dc. \*(1 sc. Ch 1. 1 sc) in next ch-1 sp. 1 sc in each of next 6 dc. Sc2tog. 1 sc in each of next 6 dc. Rep from \* 6 times more. Join with sl st to first sc. Fasten off A. 15 sc dc between corner ch-1 sps.

**11th rnd:** Join C with sl st to any corner ch-1 sp. Beg V-st. (Ch 1. Skip next sc. Popcorn in next sc) 7 times. Ch 1. Skip next sc. \*V-st in next corner ch-1 sp. (Ch 1. Skip next sc. Popcorn in next sc) 7 times. Ch 1.\* Rep from \* 6 times more. Join with sl st to 3rd ch of ch 4. Fasten off C. 7 Popcorn sts between corner ch-1 sps.

**12th rnd:** Join A with sl st to corner ch-1 sp. Ch 1. (1 sc. Ch 1. 1 sc) in same sp as sl st. 1 sc in next dc. (1 sc in next ch-1 sp. 1 sc in next popcorn) 7 times. 1 sc in next ch-1 sp. 1 sc in next dc. \*(1 sc. Ch 1. 1 sc) in next corner ch-1 sp. 1 sc in next dc. (1 sc in next ch-1 sp. 1 sc in next popcorn) 7 times. 1 sc in next ch-1 sp. 1 sc in next dc. Rep from \* 6 times more. Join



with sl st to first sc. Fasten off A. 19 sc between corner ch-1 sps.

**Note:** Do not skip hidden stitch in the corners.

**13th rnd:** Join B with sl st to corner ch-1 sp. Beg V-st. \*V-st in next corner ch-1 sp. 1 dc in each sc to next corner ch-1 sp. Rep from \* 6 times more. Join with sl st to 3rd ch of ch 4. Fasten off B. 21 sc between corner ch-1 sps.

## Wreath Leaves



Each of the 6th, 7th and 8th rnds are an even number of V-sts around. The leaves will not line up to each other due to my design which gives the illusion of being random.

It's easier to start the surface overlay with the 8th rnd first, then complete 7th rnd and then finish with 6th rnd.

### Tips:

- The surface scale stitch orientation is achievable if the round of sts is upside down but still facing RS up.
- Start on 8th rnd first, then 7th rnd and 6th rnd.

**Note:** Ch 3 at beg of rnd counts as dc.

See Chart II on page 7.

**1st rnd:** Beg at 8th rnd, join E with sl st to first post of corner V-st. Ch 3. 4 dc down the same post as sl st. Ch 1. 5 dc up second post of same V-st – beg Surface Scale st made. \*Skip next V-st. Surface Scale st around next V-st. Rep from \* around. Join with sl st to top of ch-3. 20 Surface Scale sts. Fasten off E.

**2nd rnd:** Beg at 7th rnd, join E with sl st to first post of the 2nd V-st after corner V-st. Beg Surface Scale st around same V-st as sl st. \*Skip next V-st. Surface Scale st around next V-st. Rep from \* around. Join with sl st to

top of ch-3. 16 Surface Scale sts. Fasten off E.

**3rd rnd:** Beg at 6th rnd, join E with sl st to first post of corner V-st. Beg Surface Scale st around same V-st as sl st. \*Skip next v-st. Surface Scale st around next V-st. Rep from \* around. Join with sl st to top of ch-3. 12 Surface Scale sts. Fasten off E.

### Square Motif (Make 9)



With B ch 3. See Chart III on page 7.

**1st rnd:** 12 dc in 3rd ch from hook. Join with sl st to first dc. Fasten off A. 12 dc.

**2nd rnd:** Join A with sl st to first dc. Ch 4 (counts as 1 dc and ch 1). Popcorn in next dc. \*Ch 1. 1 dc in next dc. Ch 1. Popcorn in next dc.

Rep from \* 4 times more. Ch 1. Join with sl st to 3rd ch of ch-4. Break A. 6 popcorns and 6 dc.

**3rd rnd:** Join D with sl st to first dc. Ch 1. 1 sc in same sp as sl st. 2 sc in next ch-1 sp. 1 sc in next popcorn st. 2 sc in next ch-1 sp. \*1 sc in next dc. 2 sc in next ch-1 sp. 1 sc in next popcorn st. 2 sc in next ch-1 sp. Rep from \* 4 times more. Join with sl st to first sc. 36 sc.

**4th rnd:** Ch 3. 1 dc in same sp as sl st. 1 dc in next sc. 1 hdc in next sc. 1 sc in each of next 4 sc. 1 hdc in next sc. 1 dc in next sc. \*(2 dc. Ch 2. 2 dc) in next sc. 1 dc in next sc. 1 hdc in next sc. 1 sc in each of next 4 sc. 1 hdc in next sc. 1 dc in next sc. Rep \* twice more. 2 dc in same sp as first 2 dc. Ch 2. Join with sl st to top of ch 3. Break D. 12 sts between corner ch-2 sps.

**5th rnd:** Join C with sl st to corner ch-2 sp. Ch 1. (1 sc. Ch 1. 1 sc) in same sp as sl st. 1 sc in each st to next corner ch-2 sp. \*(1 sc. Ch 1. 1 sc) in next corner ch-2 sp. 1 sc in each st to next corner ch-2 sp. Rep from \* twice more. Join with sl st to first sc. Break C. 14 sc between corner ch-1 sps.

**6th rnd:** Join A with sl st to corner ch-1 sp. Ch 3. 1 dc in same sp as sl st. 1 dc in each sc to next corner ch-1 sp. \*(2 dc. Ch 2. 2 dc) in next corner ch-1 sp. 1 dc in each sc to next corner ch-1 sp. Rep from \* twice more. 2 dc in first corner ch-1 sp. Ch 2. Join with sl st to top of ch 3. Break A. 18 dc between corner ch-2 sps.

**7th rnd:** Join E with sl st to corner ch-2 sp. Ch 1. (1 sc. Ch 1. 1 sc) in same sp as sl st. 1 sc in each dc to next corner ch-2 sp. \*(1 sc. Ch 1. 1 sc) in next ch-2 sp. 1 sc in each dc to next corner ch-2 sp. Rep from \* twice more. Join with sl st to first sc. Fasten off E. 20 sc between corner ch-1 sps.

### Triangle Motif (Make 12)



The triangle is completed in rows starting one side and finishing on the other. You **do not** turn to keep the look consistent. The triangle is essentially a square cut in half mathematically wise.

**Notes:** **Do not** turn at end of rows. Start each row with RS facing. Ch 4 at beg of row counts as dc and ch 1.

With B ch 3. See Chart IV on page 7.

**1st row:** (RS). 7 dc in 3rd ch from hook. **Do not** turn. Fasten off A. 7 dc.

**2nd row:** (RS). Join A with sl st to first dc. Ch 4. Popcorn in next dc. (Ch 1. 1 dc in next dc. Ch 1. Popcorn in next st) twice. Ch 1. 1 dc in last dc. **Do not** turn. Fasten off A. 4 dc and 3 popcorns.

**3rd row:** (RS). Join D with sl st to 3rd ch of ch-4. Ch 1. 1 sc in same sp as sl st. 2 sc in next ch-1 sp. \*1 sc in next st. 2 sc in next ch-1 sp. Rep from \* 4 times more. 1 sc in last dc. **Do not** turn. Break D. 19 sc.

**4th row:** (RS). Join D with sl st to first sc. Ch 3. 1 dc in same sp as sl st. 1 dc in next sc. 1 hdc in next

sc. 1 sc in each of next 4 sc. 1 hdc in next sc. 1 dc in next sc. (2 dc. Ch 2. 2 dc) in next sc. 1 dc in next sc. 1 hdc in next sc. 1 sc in each of next 4 sc. 1 hdc in next sc. 1 dc in next sc. 2 dc in last sc. **Do not** turn. Break D. 12 sts before and after corner ch-2 sp.

**5th row:** (RS). Join C with sl st to top of ch 3. Ch 1. 2 sc in same sp as sl st. 1 sc in each st to next ch-2 sp. (1 sc. Ch 1. 1 sc) in next ch-2 sp. 1 sc in each st to last dc. 2 sc in last dc. **Do not** turn. Break C. 14 sc before and after corner ch-1 sp.

**Note:** **Do not** skip hidden stitch in the corners.

**6th row:** (RS). Join A with sl st to first sc. Ch 3. 1 dc in same sp as sl st. 2 dc in next sc. 1 dc in each sc to next corner ch-1 sp. \*(2 dc. Ch 2. 2 dc) in next corner ch-1 sp. 1 dc in each sc to last 2 sc. 2 dc in each of last 2 sc. **Do not** turn. Break A. 18 dc before and after corner ch-2 sp.

**7th row:** (RS). Join E with sl st to top of ch 3. Ch 1. 2 sc in same sp as sl st. 1 sc in each dc to next ch-2 sp. (1 sc. Ch 1. 1 sc) in next

ch-2 sp. 1 sc in each dc to last dc. 2 sc in last dc. Fasten off E. 20 sc before and after corner ch-1 sp.

### FINISHING

Following diagram, sew Motifs tog through back loops only. See diagram on page 5.

### Edging



Edging is started where marked on the diagram.

Stitches per side include ½ of a corner st.

The diagram is marked for your help to equally space the long sides. Count the ½ of the corner stitches with this count. Equally, space 82 sts to the middle of the

triangle and then put another 82 sts after the triangle. **Do not** count the corner stitches.

**1st rnd:** Following diagram, with RS facing, join B with sl st to corner ch-1 sp. Ch 1. (1 sc. Ch 2. 1 sc) in same sp as sl st. \*1 sc in each of next 21 sts. (1 sc. Ch 2. 1 sc) in next corner ch-1 sp. 163 sc evenly spaced to next corner ch-1 sp.\*\* (1 sc. Ch 2. 1 sc) in next ch-1 sp. Rep from \* twice more, then from \* to \*\* once. Join with sl st to first sc.

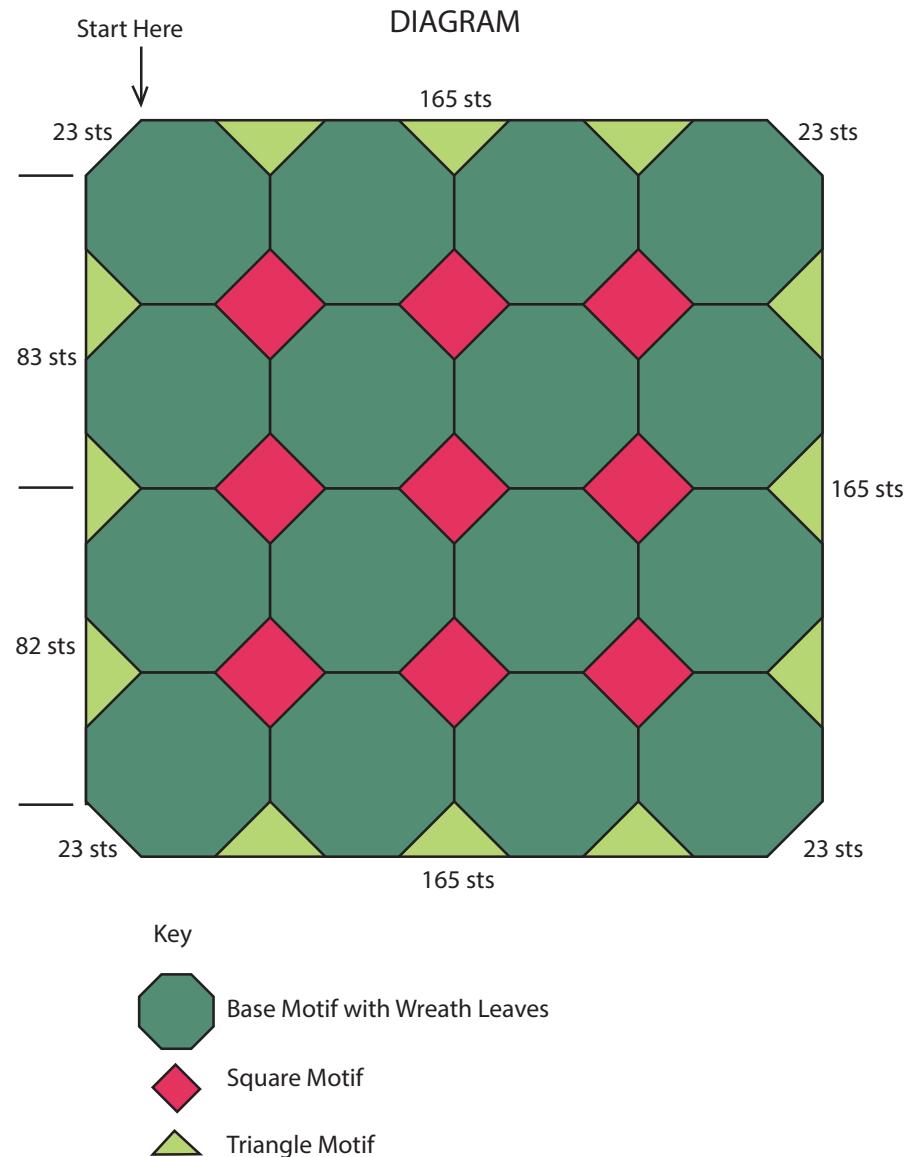
**2nd rnd:** Sl st to next ch-1 sp. Ch 1. (1 sc. Ch 1. 1 sc) in same sp as last sl st. 1 sc in each sc to next corner ch-1 sp. \*(1 sc. Ch 1. 1 sc) in next corner ch-1 sp. 1 sc in each sc to next corner ch-1 sp. Rep from \* 6 times more. Join with sl st to first sc. Fasten off B.

**3rd rnd:** Join A with sl st to any corner ch-1 sp. Ch 1. [(1 sc. Ch 1. 1 sc) in corner ch-1 sp. Ch 1. Skip next sc. \*1 sc in next sc. Ch 1. Skip

next sc. Rep from \* to next corner ch-1 sp]. Rep [ ] 7 times more. Join with sl st to first sc. Fasten off A.

**4th rnd:** Join C with sl st to any corner ch-1 sp. Ch 4. 1 dc in same sp as sl st. Ch 1. [\*Popcorn in next ch-1 sp. Ch 1.\* Rep from \* to \* to next corner ch-1 sp. (1 dc. Ch 1. 1 dc) in next corner ch-1 sp]. Rep [ ] 6 times more. Rep from \* to \* once more. Join with sl st to 3rd ch ch-4. Fasten off C.

**5th rnd:** Join E with sl st to any corner ch-1 sp. Ch 1. (1 sc. Picot. 1 sc) in same sp as sl st. \*(1 sc. Picot. 1 sc) in next ch-1 sp. Rep from \* around. Join with sl st to first sc. Fasten off.







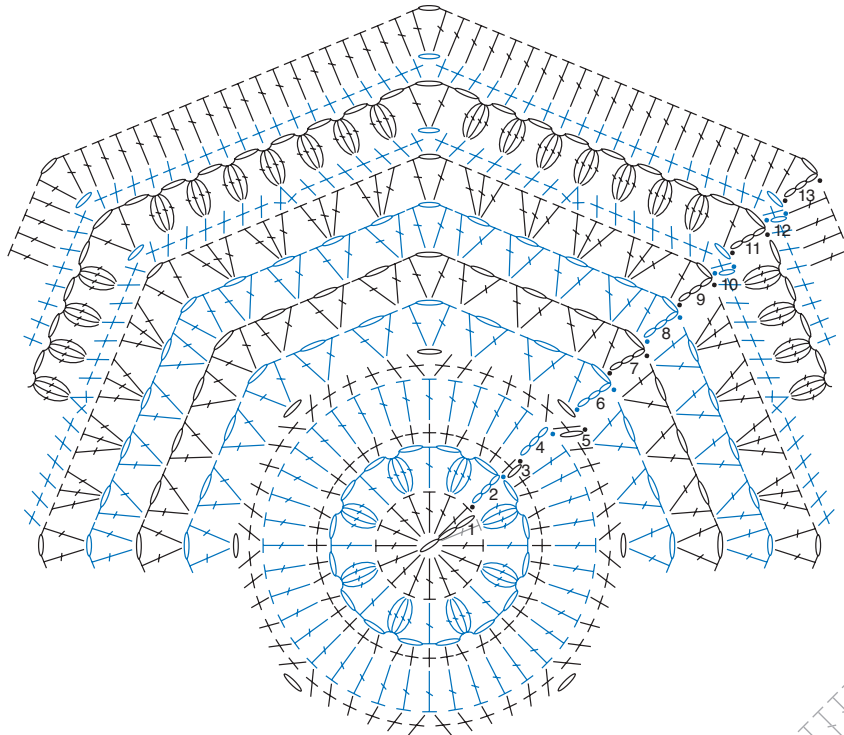


CHART I: WREATH MOTIF

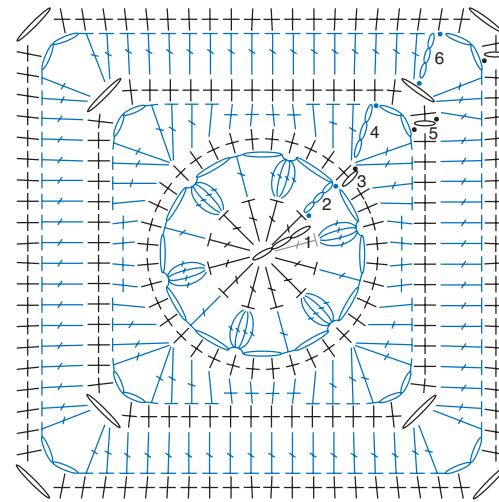


CHART II: SQUARE MOTIF

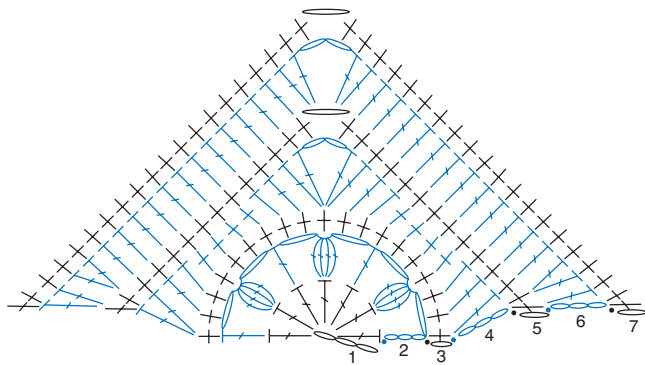
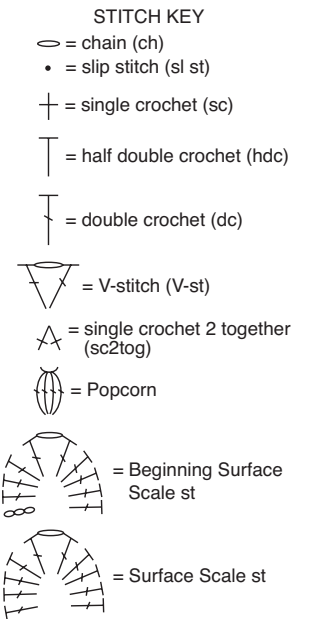


CHART IV: TRIANGLE MOTIF

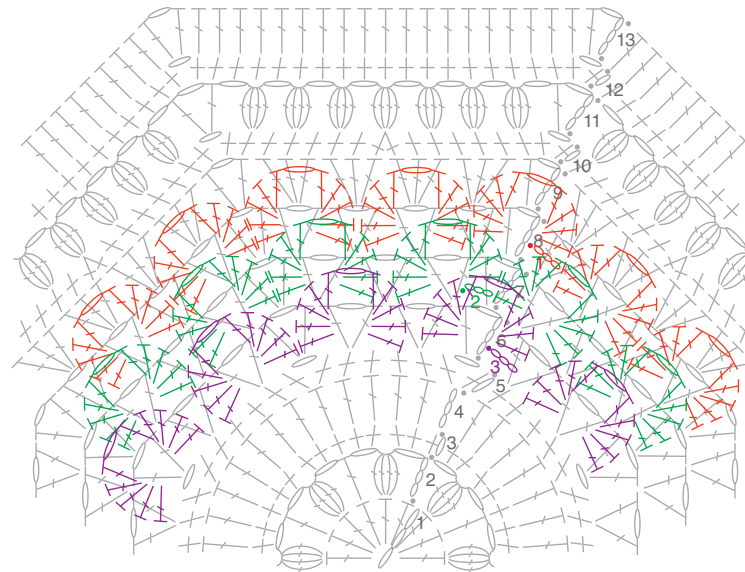


CHART III: WREATH LEAVES: SURFACE SCALE STITCH