



CROCHET | SKILL LEVEL: **EASY**

## ABBREVIATIONS

**Approx** = Approximately

**Beg** = Beginning

**BP Cluster** = Yoh and insert hook from back to front around next dc post. Yoh and draw up a loop. Yoh and draw through 2 loops on hook. Yoh and insert hook from back to front around same dc post. Yoh and draw up a loop. Yoh and draw through 2 loops on hook. Yoh and draw through all loops on hook.

**Ch** = Chain(s)

**Dc** = Double crochet

**Dc2(3)tog** = (Yoh and draw up a loop in next ch or sp. Yoh and draw through 2 loops on hook) 2(3) times. Yoh and draw through all loops on hook.

**Pat** = Pattern

**Rep** = Repeat

**Rnd(s)** = Round(s)

**RS** = Right side

**Sc** = Single crochet

**Sp(s)** = Space(s)

**St(s)** = Stitch(es)

**WS** = Wrong side

**Yoh** = Yarn over hook

## MEASUREMENTS

Approx 45" x 59" [114.5 x 150 cm]

## GAUGE

13 sc and 14 rows = 4" [10 cm].

## INSTRUCTIONS

**Note:** Ch 3 at beg of rnd counts as dc.

Ch 159. Mark every 50th ch for easier counting. See Chart on page 2.

**1st row:** (WS). 1 dc in 4th ch from hook. 1 dc in each of next 11 ch. 3 dc in next ch. 1 dc in each of next 11 ch. \*Dc3tog. 1 dc in each of next 11 ch. 3 dc in next ch. 1 dc in each of next 11 ch. Rep from \* to last 2 ch. Dc2tog. Turn.

## MATERIALS

**Caron® Simply Soft® Speckle™** (5 oz/141 g; 235 yds/215 m)  
Seashell (61009) **8 balls**

Size U.S. H/8 (5 mm) crochet hook **or size needed to obtain gauge.**

**2nd row:** Ch 3. 1 dc in next dc. (BP Cluster. 1 dc in next dc) 5 times. BP Cluster. 3 dc in next dc. (BP Cluster. 1 dc in next dc) 5 times. BP Cluster. \*Dc3tog. (BP Cluster. 1 dc in next dc) 5 times. BP Cluster. 3 dc in next dc. (BP Cluster. 1 dc in next dc) 5 times. BP Cluster. Rep from \* to last 2 dc. Dc2tog. Turn.

**3rd row:** Ch 3. 1 dc in each of next 12 sts. 3 dc in next st. 1 dc in each of next 11 sts. \*Dc3tog. 1 dc in each of next 11 sts. 3 dc in next st. 1 dc in each of next 11 st. Rep from \* to last 2 sts. Dc2tog. Turn.

**4th row:** Ch 3. 1 dc in next dc. (Ch 1. Skip next dc. 1 dc in next dc) 5 times. Ch 1. Skip next dc. 3 dc in next dc. (Ch 1. Skip next dc. 1 dc in next dc) 5 times. Ch 1. Skip next dc. \*Dc3tog. (Ch 1. Skip next dc. 1 dc in next dc) 5 times. Ch 1. Skip next dc. 3 dc in next dc. (Ch 1. Skip next dc. 1 dc in next dc) 5 times. Ch 1. Skip next dc. Rep from \* to last 2 dc. Dc2tog. Turn.

**5th row:** Ch 3. (1 dc in next ch-1 sp. 1 dc in next dc) 6 times. 3 dc in next dc. 1 dc in next dc. (1 dc in next ch-1 sp. 1 dc in next dc) 5 times. \*Dc3tog. 1 dc in next dc.

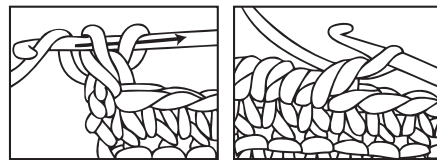
(1 dc in next ch-1 sp. 1 dc in next dc) 5 times. 3 dc in next dc. 1 dc in next dc. (1 dc in next ch-1 sp. 1 dc in next dc) 5 times. Rep from \* to last 2 dc. Dc2tog. Turn.

**6th to 8th rows:** As 3rd to 5th rows.

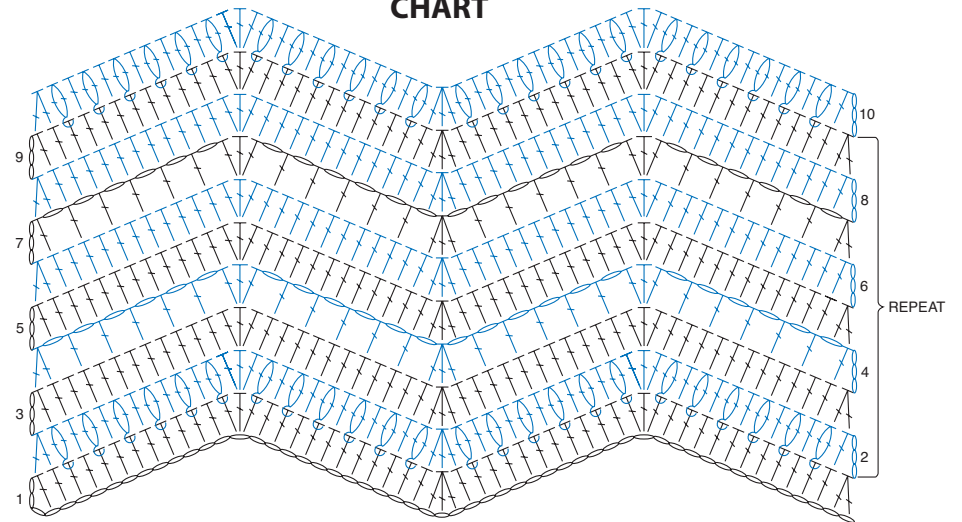
**9th row:** As 3rd row. Rep 2nd to 9th rows for pat until work from beg measures approx 61½" [156 cm], ending on a 3rd row of pat. **Do not** fasten off.

**Side edging: 1st rnd:** (RS). Ch 1. Work 1 row of sc evenly down side edge to opposite corner. **Do not** turn.

**2nd rnd:** Ch 1. Working from left to right instead of right to left as usual, work 1 reverse sc in each sc along side edge. Fasten off. Rep for other side.



## CHART



REDUCED SAMPLE OF PATTERN

### STITCH KEY

- = chain (ch)
- = double crochet (dc)
- = double crochet 2 together (dc2tog)
- = double crochet 3 together (dc3tog)
- = BP cluster

