



## MATERIALS

**Caron® One Pound™** (16 oz/453.6 g; 812 yds/742 m)  
Aqua (10622) **3 balls**

Size U.S. H/8 (5 mm) crochet hook **or size needed to obtain gauge.**

 CROCHET | SKILL LEVEL: **EASY**

## ABBREVIATIONS

**Approx** = Approximately

**Beg** = Beginning

**Ch** = Chain(s)

**Dc** = Double crochet

**Front sl st** = Insert hook from front to back around ch-1 sp. Yoh and draw through loop on hook.

**Pat** = Pattern

**Rep** = Repeat

**RS** = Right side

**Sc** = Single crochet

**Sl st** = Slip stitch

**St(s) = Stitch(es)**

**Sp(s)** = Space(s)

**Yoh** = Yarn over hook

## MEASUREMENTS

Approx 41" x 52" [104 x 132 cm], excluding fringe.

## GAUGE

12 sc and 13 rows = 4" [10 cm].

## INSTRUCTIONS

Ch 177 (multiple 12 ch + 9). See diagram on page 2.

**1st row:** (RS). 1 dc in 5th ch from hook (counts as dc, ch 1, dc). \*Ch 1. Skip next ch. 1 dc in next ch. Rep from \* to end of chain. Turn.

**2nd row:** Ch 1. 1 sc in first dc. (Ch 1. Skip next ch-1 sp. 1 sc in next dc) twice. \*(Ch 1. Skip next ch-1 sp. 1 dc in next dc) 4 times. (Ch 1. 1 sc in next dc) twice. Rep

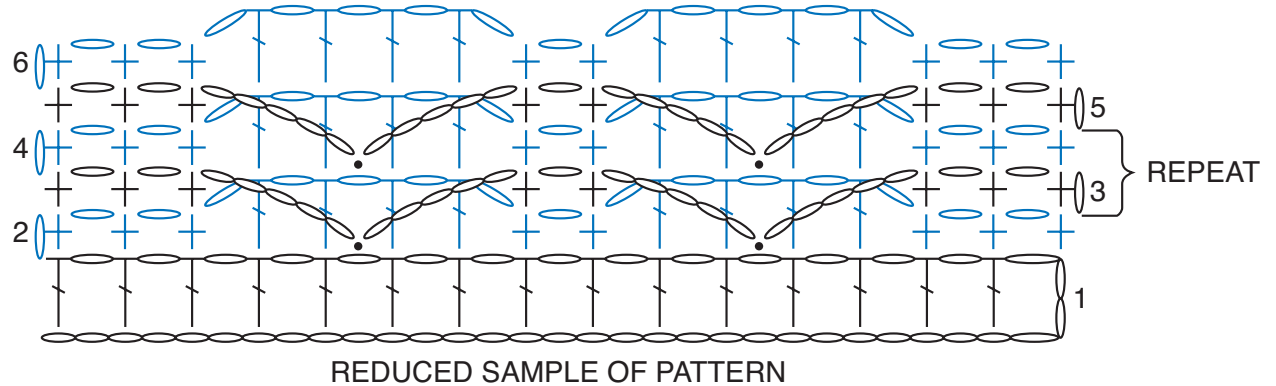
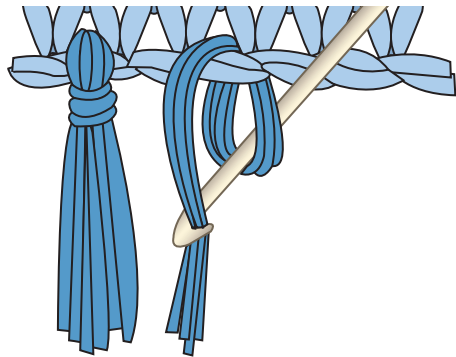
from \* to last 2 sts. Ch 1. Skip next ch-1 sp. 1 sc in last dc. Turn.

**3rd row:** Ch 1. 1 sc in first sc. (Ch 1. Skip next ch-1 sp. 1 sc in next sc) twice. \*Ch 5. Skip next (ch-1 sp, 1 dc) twice. Front sl st around next ch-1 sp 2 rows below. Ch 5. Skip next (1 dc, ch-1 sp) twice. 1 sc in next sc. Ch 1. Skip next ch-1 sp. 1 sc in next sc. Rep from \* to last 2 sts. Ch 1. Skip next ch-1 sp. 1 sc in last sc. Turn.

**4th row:** Ch 1. 1 sc in first sc. (Ch 1. Skip next ch-1 sp. 1 sc in next sc) twice. \*(Ch 1. Skip next ch-1 sp. Working in front of ch-5 sp, 1 dc in next dc) 4 times. (Ch 1. 1 sc in next sc) twice. Rep from \* to last 2 sts. Ch 1. Skip next ch-1 sp. 1 sc in last sc. Turn.

Rep last 2 rows for pat until work from beg measures approx 52" [132 cm], ending on 4th row. Fasten off.

**Fringe:** Cut strands of yarn 16" [40.5 cm] long. Taking 2 strands together, fold in half and knot into fringe across both ends of Blanket. Trim fringe evenly.



**STITCH KEY**

- = chain (ch)
- = slip stitch (sl st)
- † = single crochet (sc)
- ⌋ = double crochet (dc)