



CROCHET | SKILL LEVEL: **EASY**

### ABBREVIATIONS

**Approx** = Approximate(ly)  
**Ch** = Chain(s)  
**Cont** = Continue(ity)  
**Dc** = Double crochet  
**Hdc** = Half double crochet  
**Pat** = Pattern  
**Rem** = Remain(ing)  
**Rep** = Repeat  
**RS** = Right side  
**Sc** = Single crochet

**Scbl** = Single crochet in back loop only  
**Scfl** = Single crochet in front loop only  
**Sl st** = Slip stitch  
**St(s)** = Stitch(es) front loop only of next stitch  
**Tog** = Together  
**WS** = Wrong side  
**Yoh** = Yarn over hook

### MEASUREMENTS

Approx 50" x 60" [127 cm x 152.5 cm]

### GAUGE

13 dc and 7 rows = 4" [10 cm].

### INSTRUCTIONS

**Note:** Pat is worked over a multiple of 15 sts. To join new color, work to last loops on hook of previous color. Yoh with new color, draw through rem loops and proceed with new color.

**Striped Panel** (worked lengthwise - make 10)  
 With MC, ch 197 loosely.  
**1st row:** (WS). 1 dc in 4th ch from hook (counts as 2 dc). 1 dc in each ch to end of chain. Turn. 195 sts.  
**2nd row:** Ch 3 (counts as dc). 1 dc in each dc to end of row. Turn.  
**3rd row:** Ch 3 (counts as dc). 1 dc in each dc to end of row. Join A. Break MC. Turn.  
**4th row:** With A, ch 1. 1 scbl in each dc to end of row. Turn.  
**5th row:** Ch 1. 1 scfl in each sc to end of row. Join B. Break A. Turn.

### MATERIALS

Caron® Simply Soft™ (6 oz/170 g; 315 yds/288 m)

<b>Main Color (MC)</b> Bone (39703)	<b>5 balls</b>
<b>Contrast A</b> Pumpkin (39765)	<b>2 balls</b>
<b>Contrast B</b> Taupe (39783)	<b>1 ball</b>
<b>Contrast C</b> Pagoda (COL0014)	<b>2 balls</b>

Size U.S. H/8 (5 mm) Susan Bates® Silvalume™ crochet hook **or size needed to obtain gauge.** Susan Bates® Steel Yarn Needle.

**6th row:** With B, ch 1. 1 sc in each sc to end of row. Join A. Break B. Turn.

**7th row:** With A, ch 1. 1 scfl in each sc to end of row. Turn.

**8th row:** Ch 1. 1 scbl in each sc to end of row. Join MC. Break A. Turn.

**9th row:** With MC, ch 1. 1 scfl in each sc to end of row. Turn.

**10th row:** Ch 1. 1 scbl in each sc to end of row. Turn.

**11th row:** Ch 1. 1 scfl in each sc to end of row. Join C. Break MC. Turn.

**12th row:** With C, ch 1. \*1 scbl in each of next 5 sc. 1 hdc in next sc. 1 long hdc in next st 3 rows below (in 9th row). 1 long hdc in next st 5 rows below (in 7th row). 1 long hdc in next st 3 rows below (in 9th row). 1 hdc in next sc. 1 scbl in each of next 5 sc. Rep from \* to end of row. Turn.

**13th row:** Ch 1. 1 sc in each st to end of row. Turn.

**14th row:** Ch 1. 1 scbl in each st to end of row. Fasten off.

## FINISHING

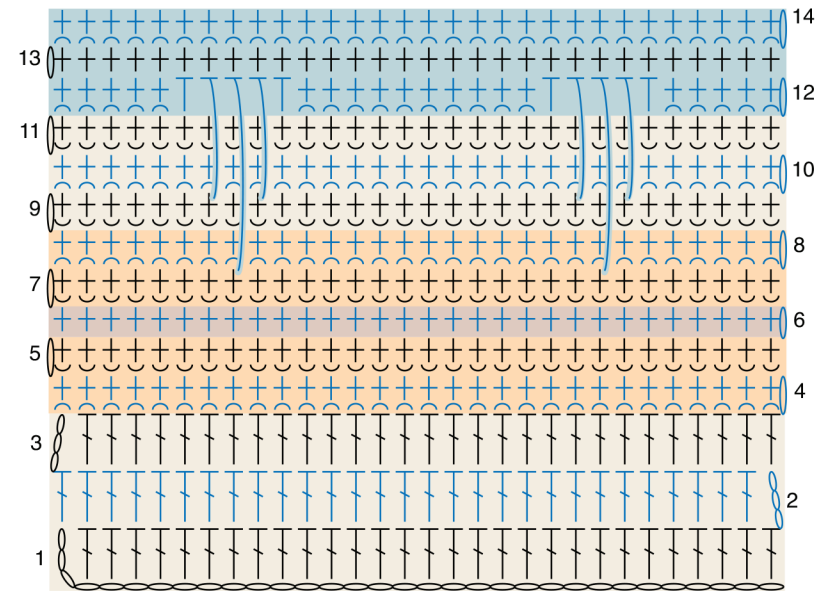
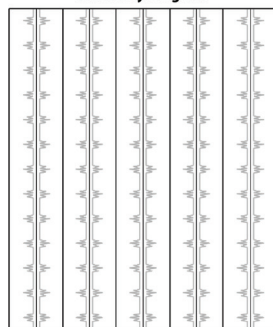
**Joining:** Place WS of 2 Striped Panels tog to form a mirror image (see assembly diagram). With RS facing, join MC with sl st and cont to sl st 2 Striped Panels tog through back loops only to create a flat sl st seam.

Join Striped Panels tog to form 5 larger strips (2 Panels in each strip). With RS facing, join B with sl st and cont to sl st strips tog through back loops only to create a flat sl st seam.

**Fringe:** Cut lengths of MC, A, B and C 10" [25.5 cm] long. Taking 3 strands tog, match fringe to color in pat at each end of Blanket. Trim fringe evenly.



Assembly Diagram



REDUCED SAMPLE OF PATTERN

**COLOR KEY**

	= MC
	= Contrast A
	= Contrast B
	= Contrast C

**STITCH KEY**

	= chain (ch)
	= single crochet (sc)
	= half double crochet (hdc)
	= long half double crochet (long hdc)
	= double crochet (dc)
	= through back loop only (tbl)
	= through front loop only (tfl)