



Stately Columns Throw

designed by Darla J. Fanton

FREE

1 INTERMEDIATE

SIMPLY SOFT™

DESCRIPTION SIZING

Abbreviations

Ch(s) = Chain(s)

Dc = double crochet

hdc = half double
crochet

sc = single crochet
Sl st = Slip stitch

Details & Instructions

MEASUREMENTS

Finished Measurements

Blanket measures
approximately
33"/84cm wide x
40"/101.5cm long

MATERIALS

Simply Soft (170 g/6. oz; 288 m/315 yds)



Contrast A Dark Sage (9707)

4

One size US K-10.5 (6.5mm) crochet hook, or size to obtain gauge.
Locking stitch marker or safety pin. Yarn needle

Simply Soft Paints (113 g/4. oz; 190 m/208 yds)



Contrast B Spring Brook (0004)

4

One size US K-10.5 (6.5mm) crochet hook, or size to obtain gauge.
Locking stitch marker or safety pin. Yarn needle

GAUGE

In pattern, 4 shells and 10 rows = 4"/10cm

INSTRUCTIONS

STITCHES USED

Chain (ch), double crochet (dc), half double crochet (hdc), single crochet (sc), slip stitch (sl st)

SPECIAL TERM

shell: (2 dc, ch 1, 2 dc) in indicated stitch or space.

NOTE

1. Pay close attention when you reach the end of a row. You only turn at the end of every other row.
2. To change to color A in final st, work last hdc in B to last yarn over (3 loops remaining on hook). Remove A loop from stitch marker and place on end of hook. Draw A through final 3 loops of B, completing the hdc.
3. Carry unused color along side of work.

HELPFUL

1. For two fewer tails to weave in, leave 11"/28cm tails of A at beg and end of throw and incorporate them into the fringe.
2. Color A shells are always worked into ch-1 sps of color A shells, and color B shells are always worked into ch-1 sps of color B shells.

THROW

With A, ch 164.

Row 1 (RS): 2 dc in 4th ch from hook (beginning ch counts as first dc), ch 3, sk next 7 ch, *(2 dc, ch 1, 2 dc) in next ch (shell made), ch 3, sk next 7 ch; repeat from * across, 3 dc in last ch; drop loop from hook and place on stitch marker, do NOT turn—19 shells and 6 dc.

Row 2 (RS): Join B with sl st in top of ch at beginning of previous row; ch 2, working over next ch-3 sp and into skipped foundation chs below, shell in 4th skipped foundation ch, *ch 3, working over next ch-3 sp, shell in 4th skipped foundation ch; repeat from * across, ch 1, hdc in last dc and change to A, turn—20 shells.

Row 3: Ch 3, 2 dc in first color A st below (this is the same st as the hdc was worked, at end of previous row), ch 3, sk next color B shell, *shell in ch-1 sp of color A shell below, ch 3, sk next color B shell; repeat from * across, 3 dc in top of color A turning ch below; drop loop from hook and place on stitch marker, do NOT turn—19 shells and 6 dc.

Row 4: Draw B through top of ch at beginning of previous row; ch 2, working over next ch-3 sp, shell in ch-1 sp of next color B shell below, *ch 3, working over next ch-3 sp, shell in ch-1 sp of next color B shell below; repeat from * across, ch 1, hdc in last dc and change to A, turn—20 shells.

Row 5: Repeat Row 3.

Rows 6–145: Repeat Rows 4 and 5 seventy times.

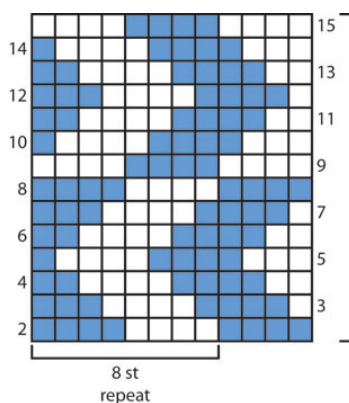
FINISHING

Fringe

Using corresponding colors, cut strands 21"/53.5cm long. Holding 7 strands together, fold fringe in half. Using crochet hook, *insert hook from WS to RS into center st st base of shell, pull through fold of strands (loop), insert ends into loop and pull tight against edge; repeat from *, working into base of shells along entire lower edge.

Repeat, working fringe into center top of shells, along entire upper edge.

Using yarn needle, weave in all ends.



14 row repeat
(work these rows
a total of 5 times;
2 repeats with A and C,
1 repeat with B and C,
and 2 repeats with A and C)

