



MATERIALS

Caron® Simply Soft™ (6 oz/170.1 g; 315 yds/288 m)

Contrast A Burgundy (39762)	1 ball
Contrast B Harvest Red (39763)	1 ball
Contrast C Watermelon (B9604)	1 ball
Contrast D Mango (B9605)	1 ball
Contrast E Orange (39778)	1 ball
Contrast F Gold (39782)	1 ball
Contrast G Chartreuse (39771)	1 ball
Contrast H Green (39779)	1 ball
Contrast I Cool Green (39770)	1 ball
Contrast J Blue Mint (B9608)	1 ball
Contrast K Cobalt Blue (39784)	1 ball
Contrast L Royal Blue (39767)	1 ball
Contrast M Berry Blue (B9609)	1 ball
Contrast N Purple (39781)	1 ball
Contrast O Fuchsia (39764)	1 ball

Size U.S. H/8 (5 mm) crochet hook **or size needed to obtain gauge.**

ABBREVIATIONS:

CROCHET | SKILL LEVEL: **EASY**

Approx = Approximately

Beg = Beginning

Beg bobble = Ch 3. (Yoh and draw up a loop.

Yoh and draw through 2 loops on hook) twice in indicated stitch. Yoh and draw through all loops on hook.

Bobble = (Yoh and draw up a loop. Yoh and draw through 2 loops on hook) 3 times in indicated stitch. Yoh and draw through all loops on hook.

Ch = Chain(s)

Dc = Double crochet

Hdc = Half double crochet

Rem = Remaining

Rep = Repeat

Rnd(s) = Round(s)

RS = Right side

Sc = Single crochet

Sl st = Slip stitch

Sp(s) = Space(s)

St(s) = Stitch(es)

Tog = Together

Yoh = Yarn over hook

MEASUREMENTS

Approx 47½" x 62½" [120.5 x 158.5 cm]

GAUGE

13 sc and 14 rows = 4" [10 cm].

Small Motif = Approx 2½" [6 cm] square.

Medium Motif = Approx 5" [12.5 cm] square.

Large Motif = Approx 7½" [19 cm] square.

INSTRUCTIONS

Note: Ch 3 at beg of rnd counts as dc throughout.

Large Motif (Make 2 of each color – 30 total) See Diagram 1 on page 3.

Ch 4. Join with sl st to first ch to form a ring.

1st rnd: (Beg bobble. Ch 1. Bobble) in ring. (Ch 3. Bobble. Ch 1. Bobble) 3 times in ring. Ch 3. Join with sl st to top of beg bobble.

2nd rnd: Sl st to next ch-1 sp. (Beg bobble. Ch 1. Bobble) in same sp as last sl st. *Ch 3. (1 dc. Ch 3) twice in next ch-3 sp for corner. (Bobble. Ch 1. Bobble) in next ch-1 sp. Rep from * twice more. Ch 3.

(1 dc. Ch 3) twice in last ch-3 sp for corner. Join with sl st to top of beg bobble.

3rd rnd: Sl st to next ch-1 sp. (Beg bobble. Ch 1. Bobble) in same sp as last sl st. *Ch 1. 1 dc in next ch-3 sp. Ch 3. (1 dc.

Ch 3) twice in next corner ch-3 sp. 1 dc in next ch-3 sp. Ch 1.** (Bobble. Ch 1. Bobble) in next ch-1 sp. Rep from * twice more, then from * to ** once. Join with sl st to top of beg bobble.

4th rnd: Sl st to next ch-1 sp. (Beg bobble. Ch 1. Bobble) in same sp as last sl st. *Ch 3. Skip next ch-1 sp. 1 dc in next ch-3 sp. Ch 3. (1 dc. Ch 3) twice in next corner ch-3 sp. 1 dc in next ch-3 sp. Ch 3. Skip next ch-1 sp.** (Bobble. Ch 1. Bobble) in next ch-1 sp. Rep from * twice more, then from * to ** once. Join with sl st to top of beg bobble.

5th rnd: Sl st to next ch-1 sp. (Beg bobble. Ch 1. Bobble) in same sp as last sl st. *Ch 1. 1 dc in next ch-3 sp. Ch 3. 1 dc in next ch-3 sp. Ch 3. (1 dc. Ch 3) twice in next corner ch-3 sp. 1 dc in next ch-3 sp. Ch 3. 1 dc in next ch-3 sp. Ch 1.** (Bobble. Ch 1. Bobble) in next ch-1 sp. Rep from * twice more, then from * to ** once. Join with sl st to top of beg bobble.

6th rnd: Sl st to next ch-1 sp. (Beg bobble. Ch 1. Bobble) in same sp as last sl st. *Ch 3. Skip next ch-1 sp. (1 dc in next ch-3 sp. Ch 3) twice. (1 dc. Ch 3) twice in next

corner ch-3 sp. (1 dc in next ch-3 sp. Ch 3) twice. Skip next ch-1 sp.** (Bobble. Ch 1. Bobble) in next ch-1 sp. Rep from * twice more, then from * to ** once. Join with sl st to top of beg bobble.

7th rnd: Ch 1. 1 sc in same sp as last sl st. 1 sc in next ch-1 sp. 1 sc in next bobble. *(3 sc in next ch-3 sp. Skip next dc) 3 times. (2 sc. Ch 3. 2 sc) in next corner ch-3 sp. (3 sc in next ch-3 sp. Skip next dc) twice. 3 sc in next ch-3 sp.** 1 sc in next bobble. 1 sc in next ch-1 sp. 1 sc in next bobble. Rep from * twice more, then from * to ** once. Join with sl st to first sc. Fasten off.

Medium Motif (Make 3 of each color – 45 total) See Diagram 2 on page 3.

Ch 4. Join with sl st to first ch to form a ring.

1st rnd: Ch 3. [2 dc. (Ch 3. 3 dc) 3 times] all in ring. Ch 1. Join with hdc to top of ch 3.

2nd rnd: Ch 3. 2 dc around post of hdc. [(3 dc. Ch 3. 3 dc) in next ch-3 sp] 3 times. 3 dc in same sp as first 3 dc. Ch 1. Join with hdc to top of ch 3.

3rd rnd: Ch 3. 2 dc around post of hdc. *3 dc between next 2 groups of 3 dc.

(3 dc. Ch 3. 3 dc) in next ch-3 sp. Rep from * twice more. 3 dc between next 2 groups of 3 dc. 3 dc in same sp as first 3 dc. Ch 1. Join with hdc to top of ch 3.

4th rnd: Ch 3. 2 dc around post of hdc. *(3 dc between next 2 groups of 3 dc) twice. (3 dc. Ch 3. 3 dc) in next ch-3 sp. Rep from * twice more. (3 dc between next 2 groups of 3 dc) twice. 3 dc in same sp as first 3 dc. Ch 1. Join with hdc to top of ch 3.

5th rnd: Ch 1. 2 sc around post of hdc. (1 sc in each of next 12 dc. 5 sc in next ch-3 sp) 3 times. 1 sc in each of next 12 dc. 3 sc in same sp as first sc. Join with sl st to first sc. Fasten off.

Small Motif (Make 2 each with A, B, C, D, E, F, H, I, K, M and N. Make 1 with G, J and L – 25 total) See Diagram 3 on page 4.

Ch 4. Join with sl st to first ch to form a ring.

1st rnd: Ch 3. [2 dc. (Ch 3. 3 dc) 3 times] all in ring. Ch 1. Join with hdc to top of ch 3.

2nd rnd: Ch 3. 1 dc around post of hdc. [1 dc in each of next 3 dc. (2 dc. Ch 3. 2 dc) in next ch-3 sp] 3 times. 1 dc in each

of next 3 dc. 2 dc in same sp as first sc. Ch 3. Join with sl st to top of ch 3. Fasten off.

Following Assembly Diagram on page 4, sew Motifs tog.

Edging: 1st rnd: (RS). Join H with sl st to any corner. Ch 2 (does not count as hdc). Work 1 hdc in each st around, having 3 hdc in each corner. Join with sl st to first hdc. Fasten off.

2nd rnd: Join I with sl st to any corner hdc. Ch 1. 1 sc in each hdc around, having 3 sc in each corner hdc. Join with sl st to first sc. Fasten off.

3rd rnd: Join J with sl st to any corner sc. Ch 1. 1 sc in each sc, having 3 sc in each corner sc. Join with sl st to first sc. Fasten off.

4th rnd: With K, as 3rd rnd. Fasten off.

DIAGRAM 1

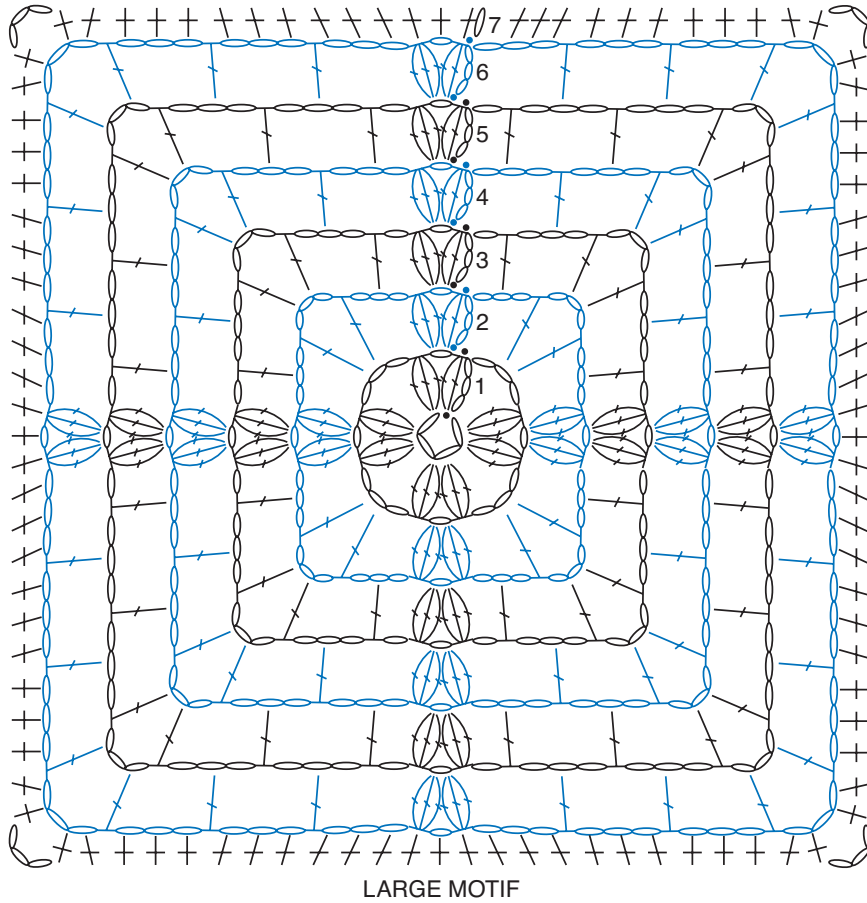
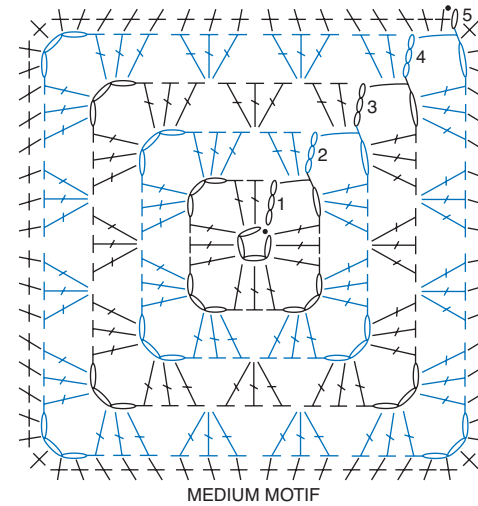


DIAGRAM 2



STITCH KEY








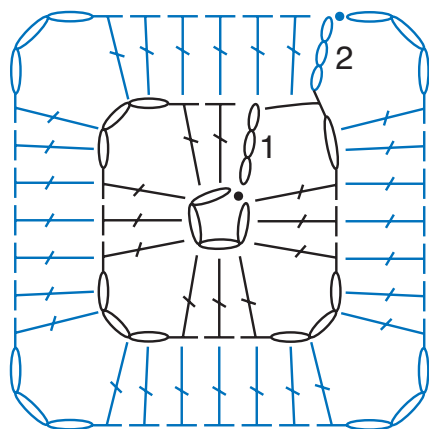
-  = chain (ch)
-  = slip st (sl st)
-  = single crochet (sc)
-  = half double crochet (hdc)
-  = double crochet (dc)
-  = Beg bobble
-  = Bobble

DIAGRAM 3



SMALL MOTIF

STITCH KEY

- = chain (ch)
- = slip st (sl st)
- = half double crochet (hdc)
- = double crochet (dc)

ASSEMBLY DIAGRAM

