



 CROCHET | SKILL LEVEL: EASY

MEASUREMENTS

Approx 45 x 54" [114.5 x 137 cm].

GAUGE

12 sc and 13 rows = 4" [10 cm].

INSTRUCTIONS

Ch 149. (See diagram on page 2).

1st row: (RS). 1 sc in 2nd ch from hook. 1 sc in each ch to end of ch. Turn. 148 sc.

2nd row: Ch 1. 1 sc in first sc. Ch 2. Skip next 2 sc. *1 sc in each of next 2 sc. Ch 2. Skip next 2 sc. Rep from * to last sc. 1 sc in last sc. Turn.

3rd row: Ch 3 (counts as dc). *4 tr in next ch-2 sp. Rep from * to last sc. 1 dc in last sc. 37 4-tr groups.

4th row: Ch 1. 1 sc in first dc. 1 hdc between first dc and next 4-tr group. *Ch 2. 2 hdc between last 4-tr group and next 4-tr group. Rep from * to last 4-tr group. Ch 2. 1 hdc between last 4-tr group and turning ch. 1 sc in last dc. Turn.

Rep last 2 rows until work from beg measures approx 53½" [136 cm], ending on a WS row.

Edging: 1st rnd: (RS). Ch 1. 1 sc in first sc. 1 sc in next hdc. 2 sc in next ch-2 sp. *1 sc in each of next 2 hdc. 2 sc in next ch-2 sp. Rep from * to last 2 sts. 1 sc in each of last 2 sts. **Do not** turn.

2nd rnd: Ch 1. Work 1 rnd of sc evenly around edge of Blanket, working 3 sc in each corner. Join with sl st to first sc. Fasten off.

MATERIALS

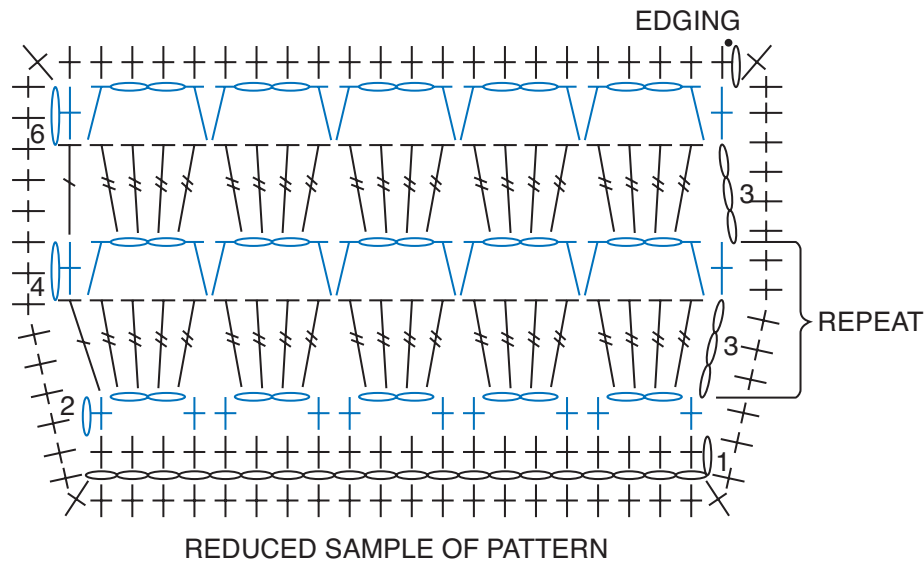
Caron® Jumbo™ (12 oz/340 g; 595 yds/544 m)
Peacock Var. (09015) **4 balls**

Size U.S. H/8 (5 mm) crochet hook **or size needed to obtain gauge.**

ABBREVIATIONS:

Approx = Approximate(ly)	Hdc = Half double crochet	St(s) = Stitch(es)
Beg = Begin(ning)	Rep = Repeat	Tr = Treble crochet
Ch = Chain(s)	Rnd = Round	WS = Wrong side
Cont = Continue	RS = Right side	
Dc = Double crochet	Sc = Single crochet	

DIAGRAM



KEY

- = chain (ch)
- = slip st (sl st)
- † = single crochet (sc)
- ┌ = half double crochet (hdc)
- └ = double crochet (dc)
- ⋈ = treble crochet (tr)