



## Pirate Throw

designed by Kim Rutledge

FREE

1

INTERMEDIATE

ONE  
POUND™

DESCRIPTION SIZING

Ahoy there! This unique throw's incredible detail and bold design make it the perfect plunder for yerself or your mateys. Crochet away pirates!

### Abbreviations

**Ch(s)** = Chain(s)

**Dc** = double crochet

**Dc2tog** = (Yoh. Draw up a loop in next st. Yoh and draw through 2 loops on hook) twice. Yoh and draw through all loops on hook.

**reverse sc** = reverse single crochet

**sc** = single crochet

**Sl st** = Slip stitch

### Details & Instructions

#### MEASUREMENTS

**Finished Measurements:**

**Approx.**  
60"/152.5cm wide x  
60"/152.5 cm long

#### MATERIALS

One Pound (454 g/16. oz; 742 m/812 yds)



**Contrast A** Scarlet (0516)



**Contrast B Black (0503)**

**6**



**Contrast C White (0501)**

**3**

One size US I-9 (5.5 mm) crochet hook, or size to obtain gauge. Five 1 1/2.5 cm steel rings (for pirate earrings). Yarn needle.

## GAUGE

In red square pattern stitch, 12 sts and 8 dc rows and 14 sc rows = 4"/10 cm.

In black square pattern stitch, 12 sts and 6 rows = 4"/10 cm.

In single crochet (skull pieces), 12 sts and 13 rows = 4"/10 cm.

## INSTRUCTIONS

1. The front post stitches (FPdc) are always worked around indicated stitches 2 rows below (one row below row into which you would usually work).
2. On even numbered sc rows, work sc's in each sc and work sc's in skipped sts *behind* the post stitches (not in the front post stitches).
3. To change color, work last stitch of old color to last yarn over; yarn over with new color and draw through all loops on hook to complete stitch. Fasten off old color and proceed with new color.

### RED SQUARE (make 4)

With A, chain 51.

**Row 1 (RS):** Sc in second ch from hook and in each remaining ch across, turn—50 sc.

**Rows 2–10:** Ch 1, sc in each st across, turn.

**Row 11:** Ch 1, sc in first 12 sts, FPdc around next 4 sts 2 rows below, sc in next 18 sts, FPdc around next 4 sts 2 rows below, sc in last 12 sts, turn.

**Row 12 and all even numbered rows (every other row):** Ch 1, sc in each st across (working in sc's and skipped sc's *behind* the post stitches, not in the post stitches themselves), turn.

**Row 13:** Ch 1, sc in first 10 sts, FPdc around next 8 sts 2 rows below, sc in next 14 sts, FPdc around next 8 sts 2 rows below, sc in last 10 sts, turn.

**Row 15:** Ch 1, sc in first 10 sts, FPdc around next 10 sts 2 rows below, sc in next 10 sts, FPdc around next 10 sts 2 rows below, sc in last 10 sts, turn.

**Row 17:** Ch 1, sc in first 8 sts, FPdc around next 12 sts 2 rows below, sc in next 10 sts, FPdc around next 12 sts 2 rows below, sc in last 8 sts, turn.

**Row 19:** Ch 1, sc in first 6 sts, FPdc around next 14 sts 2 rows below, sc in next 10 sts, FPdc around next 14 sts 2 rows below, sc in last 6 sts, turn.

**Row 21:** Repeat Rows 19.

**Row 23:** Ch 1, sc in first 6 sts, FPdc around next 16 sts 2 rows below, sc in next 6 sts, FPdc around next 16 sts 2 rows below, sc in last 6 sts, turn.

**Row 25:** Ch 1, sc in first 8 sts, FPdc around next 16 sts 2 rows below, sc in next 2 sts, FPdc around next 16 sts 2 rows below, sc in last 8 sts, turn.

**Row 27:** Ch 1, sc in first 14 sts, FPdc around next 22 sts 2 rows below, sc in last 14 sts, turn.

**Row 29:** Ch 1, sc in first 16 sts, FPdc around next 18 sts 2 rows below, sc in last 16 sts, turn.

**Row 31:** Ch 1, sc in first 18 sts, FPdc around next 14 sts 2 rows below, sc in last 18 sts, turn.

**Row 33:** Repeat Row 31.

**Row 35:** Repeat Row 29.

**Row 37:** Repeat Row 27.

**Row 39:** Repeat Row 25.

**Row 41:** Repeat Row 23.

**Row 43:** Repeat Row 21.

**Row 45:** Repeat Row 19.

**Row 47:** Repeat Row 17.

**Row 49:** Repeat Row 15.

**Row 51:** Repeat Row 13.

**Row 53:** Repeat Row 11.

**Row 54–62:** Ch 1, sc in each st across, turn.

**Edging:** Ch 1, sc evenly around entire square, working 3 sc in each corner; join with slip st in first sc. Fasten off.

### Black Square (make 5)

With B, chain 53.

**Row 1:** Dc in third ch from hook, \*dc in next 2 ch, dc2tog twice, dc in next 2 ch, 2 dc in next 2 ch; repeat from \* across, dc once more in last ch, turn—52 sts.

**Rows 2–24:** Ch 2 (counts as dc here and throughout), dc in first st (increase made), \*dc in next 2 dc, dc2tog twice, dc in next 2 dc, 2 dc in next 2 dc; repeat from \* across, 2 dc in last dc (top of turning ch), turn.

**Row 25:** Ch 2 (counts as dc here and throughout), dc in first st (increase made), \*dc in next 2 dc, dc2tog twice, dc in next 2 dc, 2 dc in next 2 dc; repeat from \* across, 2 dc in last dc (top of turning ch); change to A in last st, *do not turn*.

### Edging

**Round 1 (RS):** Working in ends of rows along side edge, sc evenly to next corner, work (sc, ch 1, extdc) in corner; working along opposite side of foundation ch, \*extdc in next st, dc in next st, hdc in next 2 sts, sc in next 2 sts, hdc in next 2 sts, dc in next st, extdc in last st; repeat from \* across to next corner, work (extdc, ch 1, sc) in corner; working in ends of rows along opposite side edge, sc evenly to next corner, work 3 sc in corner; working in sts of Row 25, \*\*hdc in next 2 sts, dc in next st, extdc in next 2 sts, dc in next st, hdc in next 2 sts, sc in next 2 sts; repeat from \*\* across to next corner, 2 sc in corner; join with slip st in first sc.

**Round 2:** Ch 1, sc evenly around, working 2 sc in each corner; join with slip st in first sc. Fasten off.

### SKULL (make 5)

With C, chain 9.

**Row 1 (WS):** Sc in second ch from hook and in each remaining ch across, turn—8 sc.

**Row 2:** Ch 2 (counts as 1 base ch and beginning ch-1), sc in second ch from hook (increase made), sc in each sc to last sc, (sc, extsc) in last sc (increase made), turn—10 sts.

**Row 3:** Repeat Row 2—12 sts.

**Row 4:** Ch 2, sc in second ch from hook, sc in each st across, turn—13 sts.

**Rows 5 and 6:** Ch 1, sc in each st across, turn.

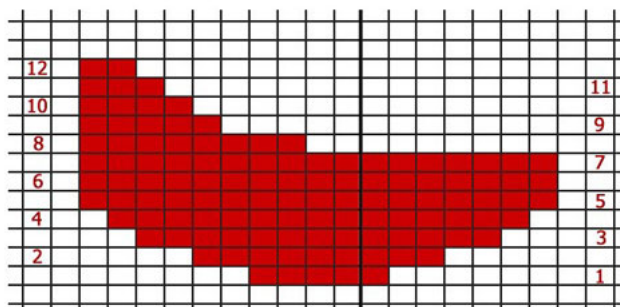
**Row 7:** Repeat Row 2—15 sts.

**Row 8:** Ch 1, sc in each st across, turn.

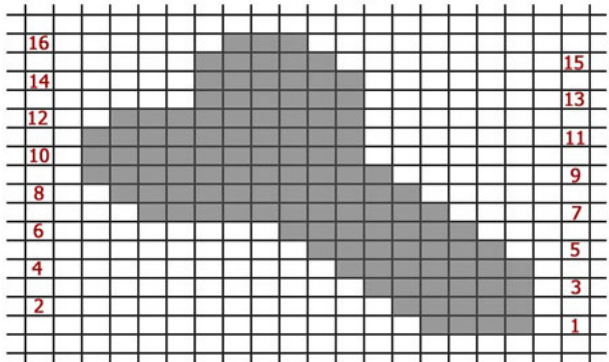
**Rows 9 and 10:** Repeat Row 2 twice—19 sts.

**Rows 11–13:** Repeat Rows 6–8—21 sts.

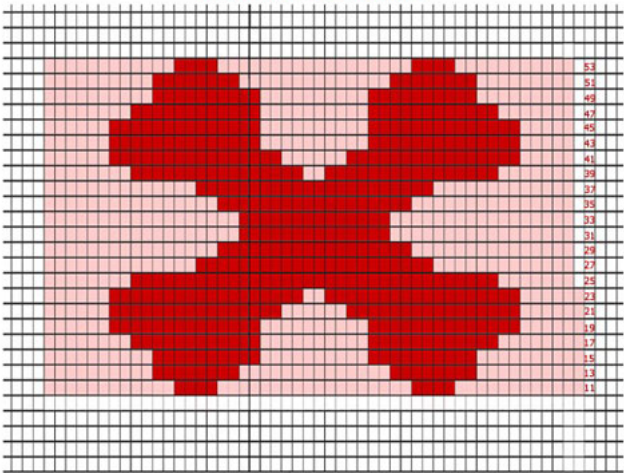
**Row 14:** Slip st in first st (decrease made), (slip st, ch 1, sc) in next st, sc in each remaining st to last st; leave last st unworked (decrease made), turn—19 sts (excluding slip sts).



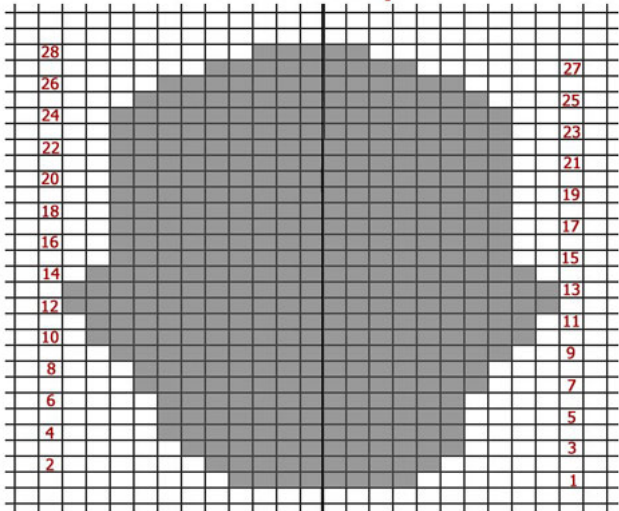
Bones Graph



Red Square  
Front Post Dc Graph



Skull Graph



Skull Face Graph

