



Tiffany Brown
from Daisy Farm Crafts

Daisy Farm Crafts



CROCHET | SKILL LEVEL: **EASY**

ABBREVIATIONS

Approx = Approximately

Beg = Begin(ning)

Ch = Chain(s)

Ehdc = (Extended half double crochet): Yoh. Draw up a loop in next st. Yoh and pull through first loop on hook. Yoh and pull through all loops on hook.

Pat = Pattern

Rep = Repeat

Rnd(s) = Round(s)

RS = Right side

Sc = Single crochet

Sl st = Slip stitch

St(s) = Stitch(es)

WS = Wrong side

Yoh = Yarn over hook

MATERIALS

Caron® Simply Soft® (6 oz/170 g; 315 yds/288 m)

Main Color (MC) White (9701) **3 balls**

Contrast A Light Country Blue (9709) **2 balls**

Contrast B Country Blue (9710) **1 balls**

Size U.S. H/8 (5 mm) crochet hook **or size needed to obtain gauge.**
Yarn needle.

Recommended: 3 small zip top bags. 3 clothespins or clips.

MEASUREMENT

Approx 34" [86.5 cm] square.

GAUGE

16 sts and 10 rows = 4" [10 cm] in pat.

INSTRUCTIONS

Notes:

- To facilitate colorwork, wind B into 3 baseball-sized balls. Put each in a separate zip top bag.

Refer to the [tutorial](#) for detailed instructions on this technique.

- To change colors, work to last 2 loops on hook of first color. Draw new color through last 2 loops and proceed with new color.
- Carry yarn not in use across top of previous row and work sts around it to prevent stranding.
- Ch 2 at beg of row **does not** count as st.

- Blanket is worked over a starting ch of 44 + 2.

With MC, ch 134.

1st row: (WS). 1 ehdc in 3rd ch from hook. 1 ehdc in each of next 10 ch. *With A, 1 ehdc in each of next 6 ch. With MC, 1 ehdc in each of next 4 ch. With B, 1 ehdc in each of next 2 ch. With MC, 1 ehdc in each of next 6 ch. With MC, 1 ehdc in each of next 22 ch. Rep from * to end of ch, ending final rep with 11 ehdc in MC. Turn.

2nd row: Ch 2. *With MC, 1 ehdc in each of first 11 sts. With A, 1 ehdc in each of next 6 sts. With MC, 1 ehdc in each of next 4 sts. With B, 1 ehdc in each of next 2 sts. With MC, 1 ehdc each of next 4 sts. With A, 1 ehdc in each of next 6 sts. With MC, 1 ehdc in each of next 11 sts. Rep from * to end of row. Turn.

3rd to 6th rows: As 2nd row.

7th row: Ch 2. *With A, 1 ehdc in each of first 11 sts. With B, 1 ehdc in each of next 6 sts. With A, 1 ehdc in each of next 4 sts. With B, 1 ehdc in each of next 2 sts. With A, 1 ehdc in each of next 4 sts. With B, 1 ehdc

in each of next 6 sts. With A, 1 ehdc in each of next 11 sts. Rep from * to end of row. Turn.

8th to 10th rows: As 7th row.

11th and 12th rows: As 2nd row.

13th and 14th rows: With B, ch 1. 1 sc in each st to end of row. Turn.

15th and 16th rows: As 2nd row.

17th to 20th rows: As 7th row.

21st to 27th rows: As 2nd row.

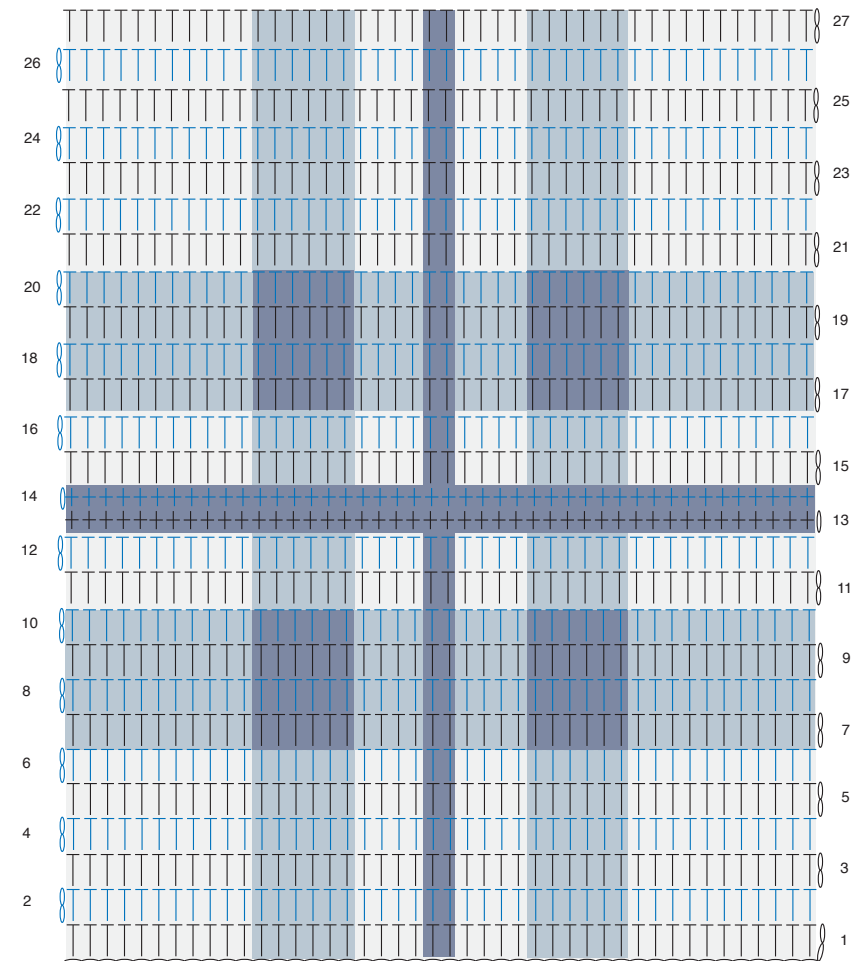
Rep 2nd to 27th rows twice more. Fasten off.

Border

Weave in ends before beg border. With RS facing, join MC with sl st to any corner.

1st rnd: Work 3 sc in each corner. Work 1 sc in each st across top and bottom, and 2 sc per hdc row and 1 sc per sc row up and down sides. Join with a sl st to first. **Turn.**

2nd rnd: Ch 1. Work 1 sc in each st around, working 3 sc in center st of each corner. Join with sl st to first sc. Fasten off.



REDUCED SAMPLE OF PATTERN

STITCH KEY	COLOR KEY
○ = chain (ch)	□ = Main Color (MC)
⊕ = single crochet (sc)	■ = Contrast A
⊥ = extended half double crochet (ehdc)	■ = Contrast B