



CROCHET | SKILL LEVEL: INTERMEDIATE

ABBREVIATIONS

Approx = Approximately

Ch = Chain(s)

Cont = Continue(ity)

Dc = Double crochet

Mosaic Dc = Working in front of chain spaces, work 1 dc in skipped stitch 3 rows below

Pat = Pattern

Rep = Repeat

Rnd = Round

RS = Right side

Sc = Single crochet

Sl st = Slip stitch

Sp(s) = Space(s)

St(s) = Stitch(es)

WS = Wrong side

Yoh = Yarn over hook

MEASUREMENTS

Approx 36" x 41" [91.5 x 104 cm].

GAUGE

13 sc and 14 rows = 4" [10 cm].

INSTRUCTIONS

Notes:

- To change color, work to last 2 loops on hook of previous color. Yoh with new color, draw through loops, and proceed with new color.
- Carry yarn when not in use loosely up side of work unless otherwise stated.

- Each skipped sc has ch sp worked above it for 2 rows (i.e. if you skip 1 sc, you will ch-2 above it). This establishes 'gap' where Mosaic dc will later be worked.
- Mosaic dc always replaces sc directly behind it on working row.
- WS of your work maintains alternating 2-row striped pat as you work in front of ch sps each time you work Mosaic dc – **do not** work around ch-sps. The ch-sps are positioned behind Mosaic dc.

MATERIALS

Caron® Baby Cakes™ (8.5 oz/240 g; 560 yds/512 m)

Contrast A White (55018) **1 ball or 451 yds/412 m**

Contrast B Retro (55036) **1 ball or 363 yds/332 m**

Contrast C Gray Owl (55019) **1 ball or 201 yds/184 m**

Size U.S. H/8 (5 mm) crochet hook **or size needed to obtain gauge.**

Stripe Pat

With A work 4 rows. Break A. Join B. With B, work 6 rows. Break B. Join A. Rep last 10 rows twice more. These 30 rows form Stripe Pat.

BLANKET

With A, ch 116 (multiple of 10 ch + 6).

1st row: (RS). 1 sc in 2nd ch from hook. 1 sc in each ch to end of chain. Turn. 115 sc.

2nd row: Ch 1. 1 sc in each sc to end of row. Turn.

First 2 rows of Stripe Pat are complete.

Keeping cont of Stripe Pat, rep 2nd row until all 30 rows of Stripe Pat are complete.

31st to 34th rows: With A, ch 1. 1 sc in each sc to end of row. Break A. Join C. Turn.

Proceed in Mosaic Pat as follows (see chart on page 3):

35th to 38th rows: With C, ch 1. 1 sc in each sc to end of row. Join A. Turn.

39th row: With A, ch 1. 1 sc in each of first 3 sc. *(Ch 2. Skip next sc. 1 sc in each of next 3 sc) twice. Ch 2. Skip next sc. 1 sc in next sc. Rep from * to last 2 sts. 1 sc in each of last 2 sts. Turn.

40th row: Ch 1. 1 sc in each of first 3 sc. *(Ch 2. Skip next ch-2. 1 sc in each of next 3 sc) twice. Ch 2. Skip next ch-2. 1 sc in next sc. Rep from * to last 2 sts. 1 sc in each of last 2 sc. Turn.

41st row: With C, ch 1. 1 sc in each of first 3 sc. *Mosaic dc in next st 3 rows below (38th row). Skip next ch-2. Ch 2. Skip next sc. 1 sc in each of next 2 sc. Mosaic dc. Skip next ch-2. 1 sc in each of next 2 sc. Ch 2. Skip next sc. Mosaic dc. Skip next ch-2. 1 sc in next sc. Rep from * to last 2 sts. 1 sc in each of last 2 sts. Turn.

42nd row: Ch 1. 1 sc in each of first 4 sts. *Ch 2. Skip next ch-2. 1 sc in each of next 5 sts. Ch 2. Skip next ch-2. 1 sc in each of next 3 sts. Rep from * to last sc. 1 sc in last sc. Turn.

43rd row: With A, ch 1. 1 sc in each of first 4 sc. *Mosaic dc in next st 3 rows below (40th row). Skip next ch-2. Ch 2. Skip next sc. 1 sc in each of next 3 sc. Ch 2. Skip next sc. Mosaic dc. Skip next ch-2. 1 sc in each of next 3 sc. Rep from * to last sc. 1 sc in last sc. Turn.

44th row: Ch 1. 1 sc in each of first 5 sts. *Ch 2. Skip next ch-2. 1 sc in each of next 3 sc. Ch 2. Skip next ch-2. 1 sc in each of next 5 sts. Rep from* to end of row. Turn.

45th row: With C, ch 1. 1 sc in each of first 2 sc. *Ch 2. Skip next sc. 1 sc in each of next 2 sc. Mosaic dc in next st 3 rows below (42nd row). Skip next ch-2. Ch 2. Skip next sc. 1 sc in next sc. Ch 2. Skip next sc. Mosaic dc. Skip next ch-2. 1 sc in each of next 2 sc. Rep from * to last 3 sc. Ch 2. Skip next sc. 1 sc in each of last 2 sc. Turn.

46th row: Ch 1. 1 sc in each of first 2 sc. Ch 2. Skip next ch-2. *1 sc in each of next 3 sts. Ch 2. Skip next ch-2. 1 sc in next sc. Ch 2. Skip next ch-2. 1 sc in each of next 3 sts. Ch 2. Skip next ch-2. Rep from * to last 2 sc. 1 sc in each of last 2 sc. Turn.

47th row: With A, ch 1. 1 sc in each of first 2 sc. *Mosaic dc in next st 3 rows below (44th row). Skip next ch-2. 1 sc in each of next 2 sc. Ch 2. Skip next sc. Mosaic dc. Skip next ch-2. 1 sc in next sc. Mosaic dc. Skip next ch-2. Ch 2. Skip next sc. 1 sc in each of next 2 sc. Rep from * to last 3 sts. Mosaic dc. Skip next ch-2. 1 sc in each of last 2 sc. Turn.

48th row: Ch 1. 1 sc in each of first 5 sts. *Ch 2. Skip next ch-2. 1 sc in each of next 3 sts. Ch 2. Skip next ch-2. 1 sc in each of next 5 sts. Rep from * to end of row. Turn.

49th row: With C, ch 1. 1 sc in each of first 4 sc. *Ch 2. Skip next sc. Mosaic dc in next st 3 rows below (46th row). Skip next ch-2. 1 sc in each of next 3 sc. Mosaic dc. Skip next ch-2. Ch 2. Skip next sc. 1 sc in each of next 3 sc. Rep from * to last sc. 1 sc in last sc. turn.

50th row: Ch 1. 1 sc in each of first 4 sc. *Ch 2. Skip next ch-2. 1 sc in each of next 5 sts. Ch 2. Skip next ch-2. 1 sc in each of next 3 sc. Rep from * to last sc. 1 sc in last sc. Turn.

51st row: With A, ch 1. 1 sc in each of first 3 sc. *Ch 2. Skip next sc. Mosaic dc in next st 3 rows below (48th row). Skip next ch-2. 1 sc in each of next 2 sc. Ch 2. Skip next sc. 1 sc in each of next 2 sc. Mosaic dc. Skip next ch-2. Ch 2. Skip next sc. 1 sc in next sc. Rep from * to last 2 sc. 1 sc in each of last 2 sc. Turn.

52nd row: Ch 1. 1 sc in in each of first 3 sc. *(Ch 2. Skip next ch-2. 1 sc in each of next 3 sts) twice. Ch 2. Skip next ch-2. 1 sc in next sc. Rep from * to last 2 sc. 1 sc in each of last 2 sc. Turn. Break A.

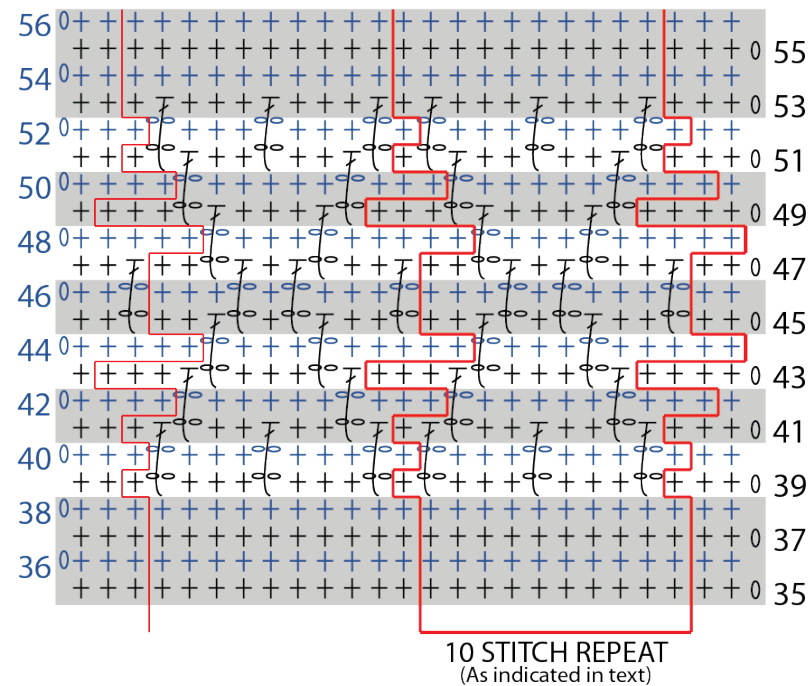
53rd row: With C, ch 1. 1 sc in each of first 3 sc. *[Mosaic dc in next st 3 rows below (50th row). Skip next ch-2. 1 sc in each of next 3 sc] twice. Mosaic dc. Skip next ch-2. 1 sc in next sc. Rep from * to last 2 sc. 1 sc in each of last 2 sc. Turn.

54th to 56th rows: Ch 1. 1 sc in each st to end of row. Turn. Join A. Break C.

Rep 1st to 56th rows once, then rep 1st to 34th rows once. Fasten off.

Edging rnd: (RS). Join A with sl st to any corner of Blanket. Ch 1. Work sc evenly around Blanket, working around yarn carried loosely up side of work to enclose it and working 3 sc in each corner. Join with sl st to first sc. Fasten off.

MOSAIC PAT



REDUCED SAMPLE OF PATTERN
(shown over stitch multiple of 10 sts + 5)

STITCH KEY

- o = chain (ch)
- + = single crochet (sc)
- F = mosaic double crochet (Mosaic dc)

