



CROCHET | SKILL LEVEL: **EASY**

ABBREVIATIONS

Approx = Approximately

Beg = Beginning

Ch = Chain(s)

Cont = Continue(ity)

Dc = Double crochet

Pat = Pattern

Rem = Remaining

Rep = Repeat

RS = Right side

Sc = Single crochet

Sl st = Slip stitch

Sp = Space

St(s) = Stitch(es)

WS = Wrong side

MEASUREMENTS

Approx 30 x 76" [76 x 196 cm],
excluding fringe.

GAUGES

12 sc and 14 rows = 4" [10 cm].

Four 3-dc groups and 9 rows =
4" [10 cm] in pat.

INSTRUCTIONS

Notes:

- Ch 3 at beg of rows counts as dc.
- Ch 2 at beg of row **does not** count as st.
- **Turn work every 2 rows:** first 2 rows worked with RS facing, then next 2 rows worked with WS facing.
- Colors change every row.

With A, ch 92 loosely (multiple 3 ch + 2). See diagram on page 2.

1st row: (RS). 1 sc in 2nd ch from hook. *Ch 2. Skip next 2 ch. 2 sc in next ch. Rep from * to last 3 ch. Ch 2. Skip next 2 ch. 1 sc in last ch. **Do not** turn. Draw a long loop to secure A from unravelling. Remove hook.

2nd row: (RS). Join B with sl st to first sc from previous row. Ch 3. *3 dc in next ch-2 sp. Skip next 2 sc. Rep from * to last ch-2 sp and sc. 3 dc in next ch-2 sp. 1 sc in last sc. Turn. Draw a long loop to secure B from unravelling. Remove hook.

MATERIALS

Caron® Macchiato Cakes™ (8 oz/227 g; 481 yds/440 m)

Contrast A Solitude (71003)

2 cakes or 880 yds/800 m

Contrast B Breathe (71012)

2 cakes or 880 yds/800 m

Size U.S. J/10 (6 mm) Susan Bates® Silvalume crochet hook **or size needed to obtain gauge.** Susan Bates® yarn needle.

3rd row: (WS). Pick up A-loop. Ch 2 (**does not** count as st). Sl st to top of first dc. Ch 1. 1 sc in same sp as sl st. *Ch 2. Skip next 3 dc. 2 sc in sp between next 2 dc. Rep from * to last 4 dc. Skip next 3 dc. 2 sc in sp between next 2 dc. 1 sc in top of last dc. **Do not** turn. Draw a long loop to secure A from unravelling. Remove hook.

4th row: (WS). Pick up B-loop. Ch 1. Sl st to top of first sc. Ch 3. *3 dc in next ch-2 sp. Skip next 2 sc. Rep from * to last ch-2 sp and sc. 3 dc in next ch-2 sp. 1 sc in last sc. Turn. Draw a long loop to secure B from unravelling. Remove hook.

5th row: (RS). Pick up A-loop. Ch 2 (**does not** count as st). Sl st to top of first dc. Ch 1. 1 sc in same sp as sl st. *Ch 2. Skip next 3 dc. 2 sc in sp between next 2 dc. Rep from * to last 4 dc. Skip next 3 dc. 2 sc in sp between next 2 dc. 1 sc in top of last dc. **Do not** turn. Draw a long loop to secure A from unravelling. Remove hook.

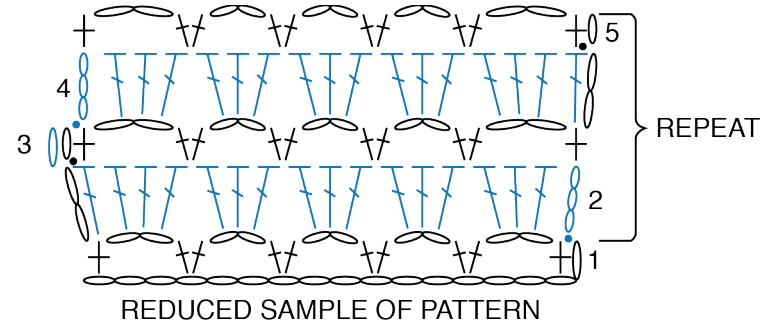
Rep 2nd to 5th rows for pat, turning work every 2 rows as established, until Wrap measures approx 38" [96.5 cm], ending on 4th row of pat.

Cont in pat, substituting B for A and A for B until Shawl measures 76" [196 cm], ending on 4th row. **Do not** fasten off.

Fringe

Next row: (RS). With A, *Ch 15. Sl st in 2nd ch from hook and each of next 13 ch. 1 sc in each of next 2 dc. Rep from * to last dc. Ch 15. Sl st in 2nd ch from hook and each of next 13 ch. Sl st in last dc. Fasten off.

For opposite end of Shawl, with RS facing, join B with sl st to first ch of rem loop of foundation chain. *Ch 15. Sl st in 2nd ch from hook and each of next 13 ch. 1 sc in each of next 2 rem loops of foundation ch. Rep from * to last ch. Ch 15. Sl st in 2nd ch from hook and each of next 13 ch. Sl st in last ch. Fasten off.



- STITCH KEY
- = chain (ch)
 - = slip stitch (sl st)
 - = single crochet (sc)
 - = double crochet (dc)

