



CROCHET | SKILL LEVEL: INTERMEDIATE

ABBREVIATIONS

Alt = Alternate(ing)

Approx = Approximately

Beg = Beginning

Ch = Chain(s)

Cont = Continue(ity)

Dc = Double crochet

Dcbp = Yoh and draw up a loop around post of indicated stitch, inserting hook from back to front to back. (Yoh and draw through 2 loops on hook) twice.

Dcfp = Yoh and draw up a loop around post of indicated stitch, inserting hook from front to back to front. (Yoh and draw through 2 loops on hook) twice.

Hdc = Half double crochet

Pat = Pattern

Rep = Repeat

RS = Right side

Sc = Single crochet

Sp = Space

Sl st = Slip stitch

St(s) = Stitch(es)

Tog = Together

Tr = Treble crochet

WS = Wrong side

Yoh = Yarn over hook

MEASUREMENTS

Approx 24" [61 cm] wide x 62" [157.5 cm] long, excluding fringe.

GAUGE

13 sc and 14 rows = 4" [10 cm] with larger hook.

INSTRUCTIONS

Pocket Linings (make 2)

With larger hook, ch 34.

1st row: (RS). 1 sc in 2nd ch from hook. 1 sc in each ch to end of row. Turn. 33 sc.

2nd row: Ch 1. 1 sc in each sc to end of row. Turn.

Rep last row for 7" [18 cm], ending on a RS row.

Fasten off.

MATERIALS

Caron® Simply Soft™ Freckle Stripes™ (5 oz/141 g; 235 yds/215 m)

Surf (75001)

9 balls or 2060 yds/1870 m

Sizes U.S. 7 (4.5 mm) and H/8 (5 mm) Susan Bates® Silvalume® crochet hooks **or size needed to obtain gauge.** Susan Bates® yarn needle.

Note: When joining next ball of yarn, try to match color very close to end of previous ball to maintain consistent striping effect. Start new ball with matching color. Unused sections of color can be used for fringe.

SHAWL (make 2 pieces alike)

See Diagram on page 3.

With larger hook, ch 75.

1st row: (WS). 1 hdc in 3rd ch from hook (counts as 2 hdc). 1 hdc in each ch to end of chain. Turn. 74 hdc.

2nd row: (RS). Ch 1. 1 hdc in first hdc. *1 dcbp around each of next 3 sts. 1 dcbp around each of next 3 sts. Rep from * to last hdc. 1 hdc in last hdc. Turn.

3rd row: Ch 1. 1 hdc in first hdc. *1 dcbp around each of next 2 sts. 1 dcbp around each of next 3 sts. 1 dcbp around next st. Rep from * to last hdc. 1 hdc in last hdc. Turn.

4th row: Ch 1. 1 hdc in first st. *1 dcbp around each of next 2 sts. 1 dcbp around each of next 3 sts. 1 dcbp in next st. Rep from * to last hdc. 1 hdc in last hdc. Turn.

5th row: Ch 1. 1 hdc in first st. *1 dcbp around each of next 3 sts. 1 dcbp around each of next 3 sts. Rep from * to last hdc. 1 hdc in last hdc. Turn.

6th row: Ch 1. 1 hdc in first st. *1 dcbp around next st. 1 dcbp around each of next 3 sts. 1 dcbp around each of next 2 sts. Rep from * to last hdc. 1 hdc in last hdc. Turn.

7th row: Ch 1. 1 hdc in first st. *1 dcbp around next st. 1 dcbp around each of next 3 sts. 1 dcbp around each of next 2 sts. Rep from * to last hdc. 1 hdc in last hdc. Turn. Rep 2nd to 7th rows until work from beg measures 9" [18 cm], ending on a RS row.

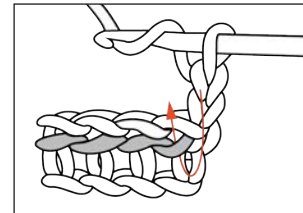
Place Pocket Lining: Next row: (WS). Ch 1. Pat across 20 sts. Work 1 sc in 33 sc from Pocket Lining. Skip next 33 sts of Shawl. Pat across last 21 sts of Shawl. Turn. 74 sts. Cont in pat until work from beg measures 31" [79 cm], ending on a WS row. Fasten off.

FINISHING

Join Shawl Pieces: With WS facing tog, align final rows of Shawl Pieces (center back). Join yarn with sl st at top corner of Shawl and work 1 row through both thicknesses as follows: Ch 1. 1 sc in same sp as sl st. *Ch 1. Skip next sc. 1 sc in next ch-1 sp. Rep from * to end of row. 1 sc in corner sc. Fasten off.

Front Neck Edging: 1st row: (RS). With smaller hook, join yarn with sl st at lower corner of Right Front and work 1 row of hdc evenly up Right Front and down Left Front. 209 hdc. Turn.

2nd row: *Work 1 hdc into horizontal bar created below st in previous row (bar is below loops normally worked on WS – see diagram). Rep from * to end of row. Turn.



Rep last row 8 times more. Fasten off.

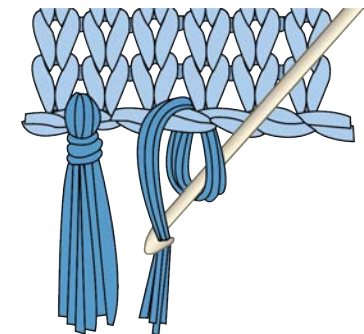
Pocket Edging: 1st row: (RS). With smaller hook, join yarn with sl st in first skipped st of Pocket edge on Shawl. Ch 2. 1 hdc in same sp as sl st. 1 sc in each of next 32 sts. Turn. 33 sc.

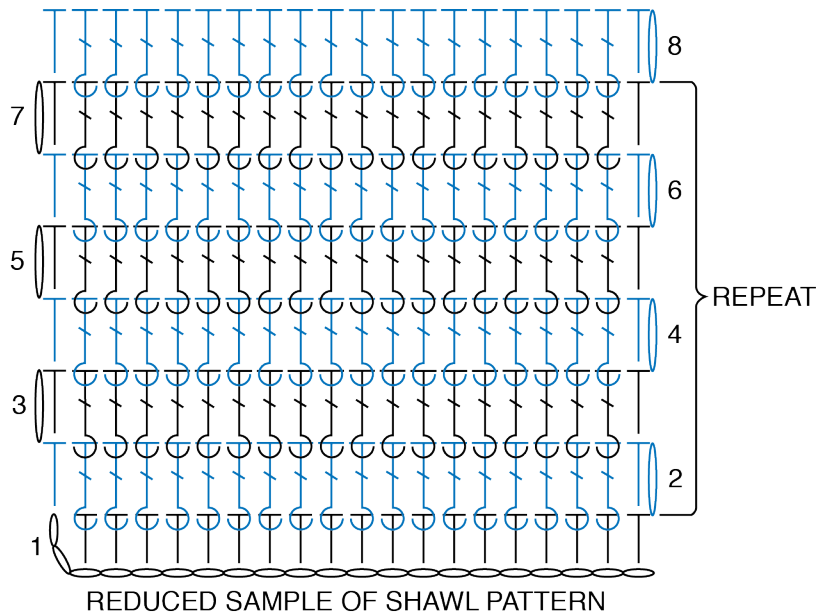
2nd row: *Work 1 hdc into horizontal bar created below st in previous row (bar is below loops normally worked on WS – see diagram above). Rep from * to end of row. Turn.

Rep last row 5 times more, ending on a RS row. Fasten off.





Sew sides of Pocket Edging in position to Shawl. Sew sides of Pocket Lining in position on WS noting that lower edge of Pocket Lining is approx 2" [5 cm] above lower edge of Shawl.

Fringe: Cut lengths of yarn 14" [35.5 cm] long. Taking 3 strands, knot into fringe in every other st across both ends of Shawl. Trim fringe evenly.





STITCH KEY

-  = chain (ch)
-  = half double crochet (hdc)
-  = back post double
crochet (dcbp)
-  = front post double
crochet (dcfp)

