



CROCHET | SKILL LEVEL: **EASY**

ABBREVIATIONS

Approx = Approximately

Beg = Beginning

Ch = Chain(s)

Dc = Double crochet

Dcbl = Double crochet in back loop only

Dc2tog = (Yoh and draw up a loop in next stitch) twice. Yoh and draw through all loops on hook

PM = Place marker

Rep = Repeat

RS = Right side

Sc = Single crochet

Sl st = Slip stitch

St(s) = Stitch(es)

Trbp = (Yoh) twice and draw up a loop around post of next stitch at back of work, inserting hook from right to left. (Yoh and draw through 2 loops on hook) 3 times.

Trfp = (Yoh) twice and draw up a loop around post of next dc 2 rows below at front of work, inserting hook from right to left. (Yoh and draw through 2 loops on hook) 3 times.

WS = Wrong side

Yoh = Yarn over hook

MEASUREMENTS

Approx 56" (142 cm) wide x 28" (71 cm) long.

GAUGE

13 sc and 14 rows = 4" [10 cm].

INSTRUCTIONS

Note: Ch 3 at beg of row counts as dc.

Ch 4. See diagrams on page 3.

1st row: (WS). 6 dc in 4th ch from hook. Turn. 7 dc.

2nd row: Ch 3. 1 dc in first st. 1 sc in each of next 2 sts. 5 dc in next st. 1 dc in each of next 2 sts. 2 dc in last st. Turn. 13 dc.

3rd row: Ch 3. 1 dc in first st. 1 sc in each of next 5 sts. 5 dc in next st. PM in 3rd (central) dc of 5-dc group just made. 1 sc in each of next 5 sts. 2 dc in last st. Turn. 19 dc.

MATERIALS

Caron® Cinnamon Swirl Cakes™ (8 oz/227 g; 407 yds/372 m)
Beach Towel (33003) **3 cakes**

Size U.S. H/8 [5 mm] crochet hook **or size needed to obtain gauge.**
Yarn needle. Split/locking stitch marker.

4th to 29th rows: Ch 3. 1 dc in first st. 1 dc each st to marked st. 5 dc in marked st. PM in 3rd (center) dc of 5-dc group just made. 1 dc in each dc to last st. 2 dc in last st. Turn. 175 dc at end of 29th row.

30th row: (RS). Ch 3. 1 dcbl in first dc. 1 dcbl each dc to marked dc. 5 dcbl in marked st. PM in 3rd (center) dcbl of 5-dcbl group just made. 1 dcbl in each dc to last st. 2 dcbl in last st. Turn. 181 sts.

31st to 34th rows: As 4th row. 205 sts. **Do not** fasten off.

Lower Ruffle Edging

35th row: (WS). Ch 3. 2 dc in first st. 2 dc in each st across to last st. 3 dc in last st. Turn. 412 sts.

36th row: Ch 3. 1 dc in each of next 3 sts. *1 trfp around each of next 4 sts. 1 dc in each of next 4 sts. Rep from * to end of row. Turn. 51 groups of 4 trfp.

37th row: Ch 3. 1 dc in each of next 3 sts. *1 trbp around each of next 4 sts. 1 dc in each of next 4 sts. Rep from * to end of row. Turn.

38th and 39th rows: As 36th and 37th rows. Fasten off.

Upper Ruffle Edging

To work first row of Upper Ruffle, hold Shawl with WS facing you and lower ruffle at top. Reach over top of lower ruffle to work into free loops of 29th row.

1st row: (WS). Working in free loops of 29th row, join yarn with sl st in first st. Ch 3. 1 dc in same st. 2 dc in each st across. Turn. 350 sts.

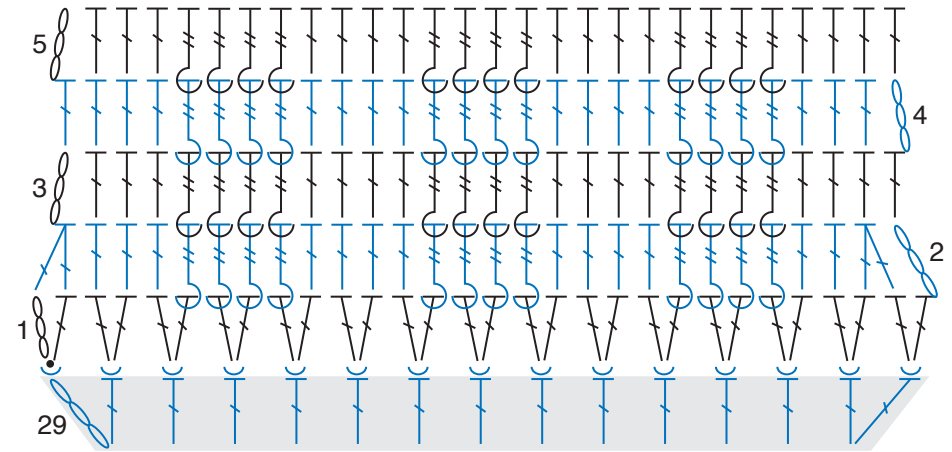
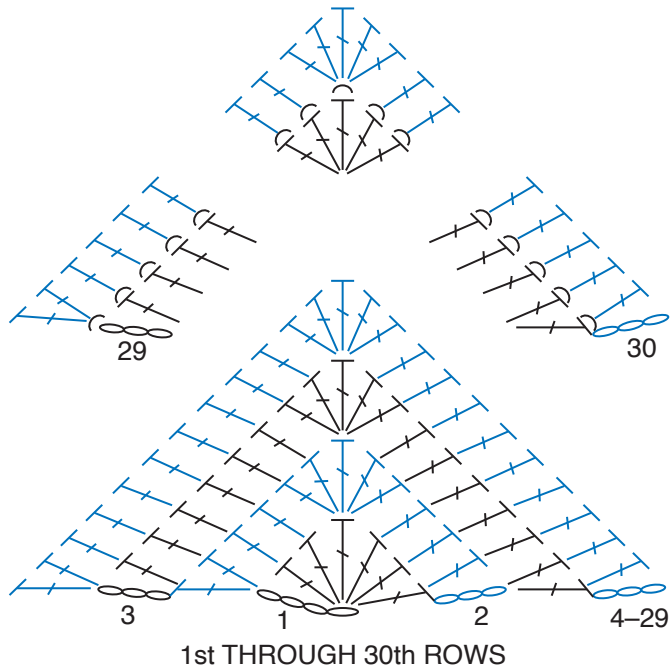
2nd row: Ch 3. Dc2tog. 1 dc in each of next 2 sts. 1 trfp around each of next 4 sts. *1 dc in each of next 4 sts. 1 trfp around each of next 4 sts. Rep from * to last 5 sts. 1 dc in each of next 3 sts. Dc2tog. 348 sts.

3rd row: Ch 3. 1 dc in each of next 3 sts. *1 trbp around each of next 4 sts. 1 dc in each of next 4 sts. Rep from * to end of row.

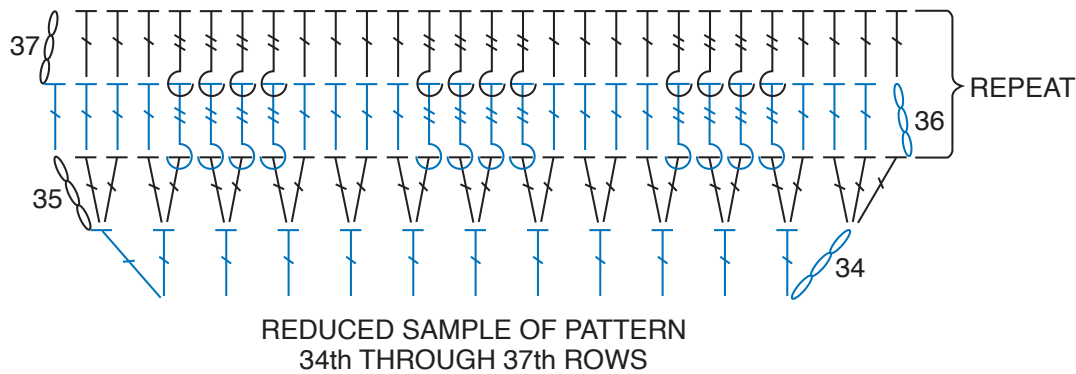
4th row: Ch 3. *1 dc in each of next 3 sts. *1 trfp around each of next 4 sts. 1 dc in each of next 4 sts. Rep from * to end of row. Turn.

5th row: As 3rd row. Fasten off.





REDUCED SAMPLE OF UPPER RUFFLE EDGING



REDUCED SAMPLE OF PATTERN
34th THROUGH 37th ROWS

STITCH KEY

- = chain (ch)
- = slip stitch (sl st)
- ┆ = double crochet (dc)
- ┆ = front post treble crochet (trfp)
- ┆ = double crochet 2 together (dc2tog)
- ⤴ = worked in back loop only
- ⤵ = worked in front loop only