



CROCHET | SKILL LEVEL: **EASY**

ABBREVIATIONS

Approx =

Approximately

Beg = Begin(ning)

Ch = Chain(s)

Dc = Double crochet

Pat = Pattern

Rep = Repeat

RS = Right side

Sc = Single crochet

Sl st = Slip stitch

Sp(s) = Space(s)

St(s) = Stitch(es)

Tr = Treble crochet

MEASUREMENTS

Approx 26" x 75" [66 x 190.5 cm],
excluding fringe.

GAUGE

12 sc and 13 rows = 4" [10 cm].

INSTRUCTIONS

Note: Ch 3 at beg of row counts
as dc.

SHAWL

Ch 96.

1st row: (RS). 1 dc in 4th ch from
hook (counts as 2 dc). 1 dc in next
ch. *Ch 4. Skip next 4 ch. 1 dc in
each of next 3 ch. Rep from * to
end of chain. Turn. 94 sts (dc and
ch).

2nd row: Ch 3. 1 dc in first dc. 1 dc
in each of next 2 dc. *Ch 4. Skip
next ch-4 sp. 1 dc in each of next
3 dc. Rep from * to end of row.
Turn.

Rep last row for pat until work
from beg measures approx 75"
[190.5 cm], ending on a RS row.
Fasten off.

FLOWER (make 64)

See diagram on page 2.

Ch 4. Join with sl st to first ch to
form a ring.

1st rnd: (Ch 4. 3 tr. Ch 4. Sl st)
5 times in ring. Fasten off.

MATERIALS

Caron® Blossom Cakes™ (8 oz/227 g; 481 yds/440 m)

Macaw (37006)

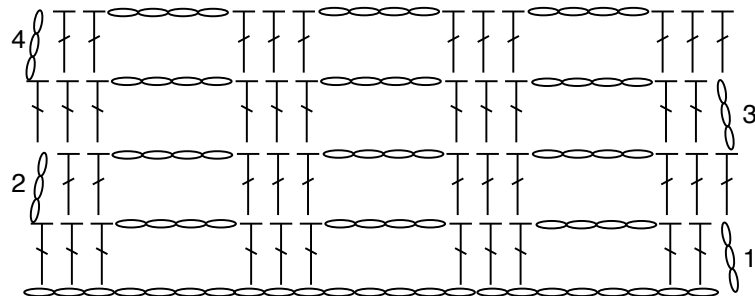
3 cakes

Size U.S. J/10 (6 mm) crochet hook **or size needed to obtain gauge.**

Fringe

*****1st row:** (RS). *Ch 28. Join yarn with sl st to any ch-4 sp of Flower. Sl st in each of next 28 ch.** 1 sc in each of next 3 dc. Ch 14. Join with sl st to any ch-4 sp of Flower. Sl st in each of next 14 ch. 1 sc in each of next 3 dc. Ch 4. Join with sl st to Join with sl st to any ch-4 sp of Flower. Sl st in each of next 4 ch. 1 sc in each of next 3 dc. Rep from * to last dc. Rep from * to ** once. Fasten off.***

With RS facing, join yarn with sl st to first ch of foundation chain. Work from *** to *** as given above.



REDUCED SHAWL DIAGRAM

STITCH KEY

- = slip stitch (sl st)
- = chain (ch)
- ┆ = double crochet (dc)
- ┆/ = treble crochet (tr)

