



CROCHET | SKILL LEVEL: INTERMEDIATE

## ABBREVIATIONS

**Approx** = Approximately

**Ch** = Chain(s)

**Pat** = Pattern

**Rep** = Repeat

**Rnd(s)** = Round(s)

**RS** = Right side

**Sc** = Single crochet

**Sl st** = Slip stitch

**Sp(s)** = Space(s)

**St(s)** = Stitch(es)

**Tog** = Together

**Tr** = Treble crochet

**Trbp6tog** = [(Yoh) twice and draw up a loop around post of next stitch at back of work, inserting hook from right to left. (Yoh and draw through 2 loops on hook) twice] 6 times. Yoh and draw through all loops on hook

**Yoh** = Yarn over hook

## MEASUREMENTS

Approx 51" [129.5] wide x 25" [63.5 cm] deep, excluding fringe.

## GAUGE

18 sts and 8 rows = 4" [10 cm] in pat.

## INSTRUCTIONS

**Note:** Shawl is worked from the top down.

Ch 233. See diagram on page 2.

**1st row:** (RS). 3 tr in 5th ch from hook (skipped ch-4 counts as tr). Ch 1. Skip next 5 ch. 1 sc in next ch. Ch 1. Skip next 5 ch. \*(3 tr. Ch 3. 3 tr)

in next ch. Ch 1. Skip next 5 ch. 1 sc in next ch. Ch 1. Skip next 5 ch. Rep from \* to last ch. 4 tr in last ch. Turn.

**2nd row:** Ch 1. 1 sc in first tr. \*Ch 5. Trbp6tog around next 6 tr (skipping center ch-1, sc and ch-1). Ch 5. 1 sc in next ch-3 sp. Rep from \* ending last rep with 1 sc in top of beg ch-4. Turn.

**3rd row:** Ch 1. 1 sc in first sc. \*Ch 1. (3 tr. Ch 3. 3 tr) in top of next trbp6tog. Ch 1. 1 sc in next sc. Rep from \* to end of row. Turn.

**4th row:** Sl st in each st to first ch-3 sp. Ch 1. 1 sc in same ch-3 sp. \*Ch 5. Trbp6tog around next 6 tr (skipping center ch-1, sc and ch-1).

## MATERIALS

**Caron® Cotton Angel Cakes™** (8.8 oz/250 g; 530 yds/485 m)

Faded Jeans (36003)

**2 balls**

Size U.S. H/8 [5 mm] crochet hook **or size needed to obtain gauge.**  
Yarn needle.

Ch 5. 1 sc in next ch-3 sp. Rep from \* to end of row (leaving last 3 tr, ch-1 and sc unworked). Turn.

**5th row:** As 3rd row.

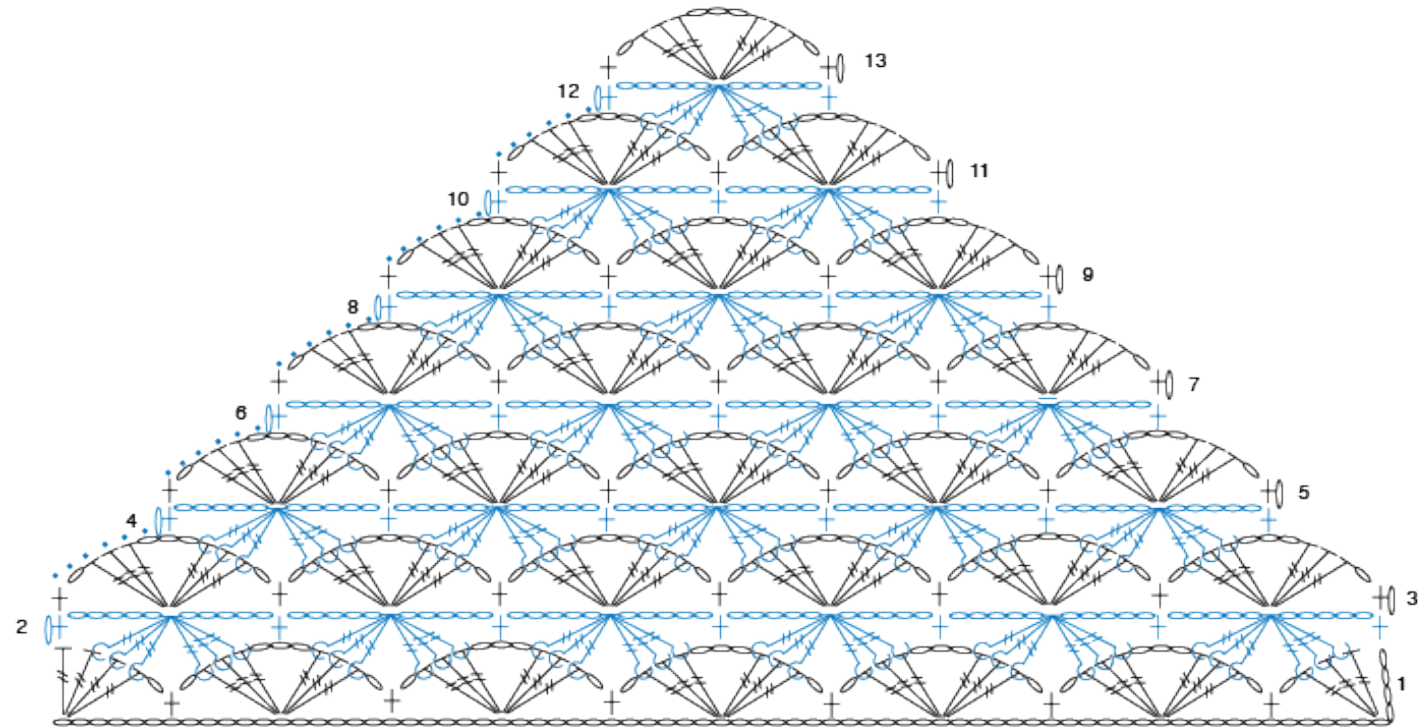
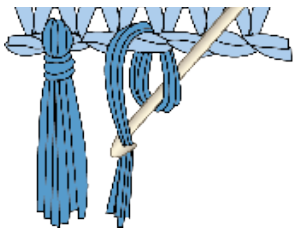
Rep 4th and 5th rows 17 times more.

Fasten off.

**Border:** With RS facing, join yarn with sl st to top right corner of Shawl at foundation ch.

**1st rnd:** Ch 1. Work sc evenly around all sides of Shawl having 2 sc at points where sides begin to decrease and 3 sc in each corner and at bottom point. Join with sl st to first sc. Fasten off.

**Fringe:** Cut lengths of yarn 18" [45.5 cm] long. Taking 3 strands tog, fold in half and knot into fringe evenly across 2 shorter sides of Shawl. Trim fringe evenly.



REDUCED SAMPLE OF PATTERN

STITCH KEY

○ = chain (ch)

• = slip stitch (sl st)

⊥ = single crochet (sc)

⋈ = treble crochet (tr)



= Back post treble crochet 6 together (Trbp6tog)