



CROCHET | SKILL LEVEL: **EASY**

ABBREVIATIONS

Approx = Approximately

Beg = Beginning

Ch = Chain(s)

Hdc = Half double crochet

PM = Place marker

Rep = Repeat

RS = Right side

Sc = Single crochet

Sc2tog = Draw up a loop in each of next 2 stitches. Yoh and draw through all loops on hook

Sl st = Slip stitch

Sp(s) = Space(s)

St(s) = Stitch(es)

WS = Wrong side

Yoh = Yarn over hook

MEASUREMENTS

Approx 65" [165 cm] across longer edge x 19" [48 cm] deep.

GAUGE

13 sc and 16 rows = 4" [10 cm].

INSTRUCTIONS

Note: Ch 2 at beg of rnds **does not** count as a st.

With A, ch 2. See diagram on page 2.

1st row: (WS). 3 sc in 2nd ch from hook. Turn. 3 sc.

2nd row: Ch 1. 2 sc in first sc. 1 sc in next sc. (1 sc. 1 hdc) in last sc. Turn. 5 sts.

3rd row: Ch 2. (1 hdc. 1 sc) in first sc. 1 sc in each of next 2 sc. Sc2tog. Turn. 5 sts.

4th row: Ch 1. 1 sc in first st. Ch 1. Skip next sc. 1 sc in next sc. 2 sc in next sc. (1 sc. 1 hdc) in last hdc. Turn. 7 sts.

5th row: Ch 2. (1 hdc. 1 sc) in first hdc. 1 sc in next sc. Ch 1. Skip next sc. 1 sc in next sc. Ch 1. Skip next sc. Sc2tog. Turn. 7 sts.

6th row: Ch 1. 1 sc in first st. (1 sc in next ch-1 sp. Ch 1. Skip next sc) twice. 2 sc in next sc. (1 sc. 1 hdc) in last hdc. Turn. 9 sts.

7th row: Ch 2. (1 hdc. 1 sc) in first hdc. (Ch 1. Skip next sc. 1 sc in next sc) 3 times. Sc2tog. Turn. 9 sts.

MATERIALS

Caron® Cotton Angel Cakes™ (8.8 oz/250 g; 530 yds/485 m)

Contrast A Coral Rose (36001) **1 ball**

Caron® Cotton Cakes™ (8.8 oz/250 g; 530 yds/485 m)

Contrast B Frozen Yogurt (57060) **1 ball**

Size U.S. J/10 (6 mm) crochet hook **or size needed to obtain gauge.**
Stitch marker.

8th row: Ch 1. 1 sc in first st. *Ch 1. Skip next sc. 1 sc in next ch-1 sp. Rep from * to last 2 sts. 2 sc in next sc. (1 sc. 1 hdc) in last hdc. Turn. 11 sts.

9th row: Ch 2. (1 hdc. 1 sc) in first hdc. *1 sc in next sc. Ch 1. Skip next sc. Rep from * to last ch-1 sp and sc. Sc2tog. Turn. 11 sts.

10th row: Ch 1. 1 sc in first st. *1 sc in next ch-1 sp. Ch 1. Skip next sc. Rep from * to last 2 sts. 2 sc in next sc. (1 sc. 1 hdc) in last hdc. Turn. 13 sts.

11th row: Ch 2. (1 hdc. 1 sc) in first hdc. *Ch 1. Skip next sc. 1 sc in next ch-1 sp. Rep from * to last 2 sts. Sc2tog. Turn. 13 sts.

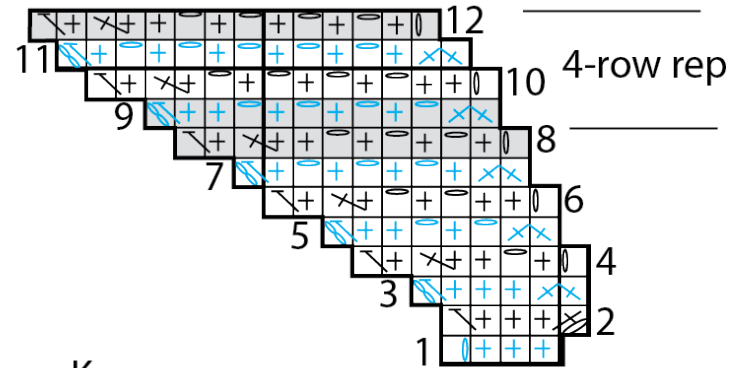
12th row: Ch 1. 1 sc in first st. *Ch 1. Skip next sc. 1 sc in next ch-1 sp. Rep from * to last 2 sts. 2 sc in next sc. (1 sc. 1 hdc) in last hdc. Turn. 15 sts. Rep last 4 rows until work from beg measures 30" [76 cm] along longer side, ending on a 12th row. PM at end of last row (at longer side). **Do not** break A.

Join B with sl st to first hdc and rep last 4 rows twice. **Do not break B. With A, rep last 4 rows once.**

Rep from ** to ** until work from beg measures approx 50" [127 cm] along longer side, ending on 4 rows of A. Break A.

With B only, rep from last 4 rows until work from beg measures 65" [65 cm] along longer side, ending on a RS row. **Do not** fasten off.

Edging: With RS facing, ch 1. Work in sc across longer side of Shawl over loose strands of yarn to end of row. Fasten off.



- Key
- = ch
 - + = sc
 - × = sc2tog
 - ⊥ = hdc

