



CROCHET | SKILL LEVEL: **EASY**

## ABBREVIATIONS

**Approx** =  
Approximately  
**Beg** = Beginning  
**Ch** = Chain(s)  
**Hdc** = Half double

crochet  
**Pat** = Pattern  
**Rep** = Repeat  
**RS** = Right side  
**Sc** = Single crochet

**Sl st** = Slip stitch  
**Sp(s)** = Space(s)  
**St(s)** = Stitch(es)  
**Tr** = Treble crochet

## MEASUREMENTS

Approx 20" x 55" [51 x 139.5 cm].

## GAUGE

11 sc and 12 rows = 4" [10 cm]

## INSTRUCTIONS

**Note:** Ch 2 at beg or row **does not** count as hdc.

Ch 189 loosely (multiple of 10 ch + 9). See diagram on page 2.

**1st row:** (RS). 1 hdc in 10th ch from hook (counts as tr and ch 3). 1 hdc in each of next 6 ch. \*Ch 6. Skip next 3 ch. 1 hdc in each of next 7 ch. Rep from \* to last 3 ch. Ch 3. Skip next 2 ch. 1 tr in last ch. Turn.

**2nd row:** Ch 2. 1 hdc in first tr. Ch 4. \*Skip next hdc. 1 hdc in each of next 5 hdc. Ch 4. Skip next hdc. 1 hdc in next ch-6 sp. Ch 4. Rep

from \* ending with 1 hdc in 5th ch of turning ch 9. Turn.

**3rd row:** Ch 2. 1 hdc in first hdc. 1 hdc in next ch-4 sp. Ch 4. \*Skip next hdc. 1 hdc in each of next 3 hdc. Ch 4. Skip next hdc. 1 hdc in next ch-4 sp. 1 hdc in next hdc.\*\* 1 hdc in next ch-4 sp. Ch 4.\* Rep from \* to \* 16 times more, then from \* to \*\* once. Turn.

**4th row:** Ch 2. 1 hdc in each of first 2 hdc. 1 hdc in next ch-4 sp. Ch 4. \*Skip next hdc. 1 hdc in next hdc. Ch 4. Skip next hdc. 1 hdc in next ch-4 sp.\*\* 1 hdc in each of next 3 hdc. 1 hdc in next ch-4 sp. Ch 4.\* Rep from \* to \* 16 times more, then from \* to \*\* once. 1 hdc in each of last 2 hdc. Turn.

## MATERIALS

**Caron® Skinny Cakes™** (8.8 oz/250 g; 795 yds/727 m)

Baked Alaska (18008)

**1 ball**

Size U.S. I/9 (5.5 mm) Susan Bates® Silvalume™ crochet hook **or size needed to obtain gauge.**

**5th row:** Ch 2. 1 hdc in each of first 3 hdc. \*1 hdc in next ch-4 sp. Ch 6. Skip next hdc. 1 hdc in next ch-4 sp.\*\* 1 hdc in each of next 5 hdc.\* Rep from \* to \* 16 times more, then from \* to \*\* once. 1 hdc in each of last 3 hdc. Turn.

**6th row:** Ch 2. 1 hdc in each of first 3 hdc. \*Ch 4. Skip next hdc. 1 hdc in next ch-6 sp. Ch 4. Skip next hdc.\*\* 1 hdc in each of next 5 hdc.\* Rep from \* to \* 16 times more, then from \* to \*\* once. 1 hdc in each of last 3 hdc. Turn.

**7th row:** Ch 2. 1 hdc in each of first 2 hdc. \*Ch 4. Skip next hdc. 1 hdc in next ch-4 sp. 1 hdc in next hdc. 1 hdc in next ch-4 sp. Ch 4. Skip next hdc.\*\* 1 hdc in each of next 3 hdc.\* Rep from \* to \* 16 times more, then from \* to \*\* once. 1 hdc in each of last 2 hdc. Turn.

**8th row:** Ch 2. 1 hdc in first hdc. \*Ch 4. Skip next hdc. 1 hdc in next ch-4 sp. 1 hdc in each of next 3 hdc. 1 hdc in next ch-4 sp. Ch 4. Skip next hdc. 1 hdc in next hdc. Rep from \* to end of row. Turn.

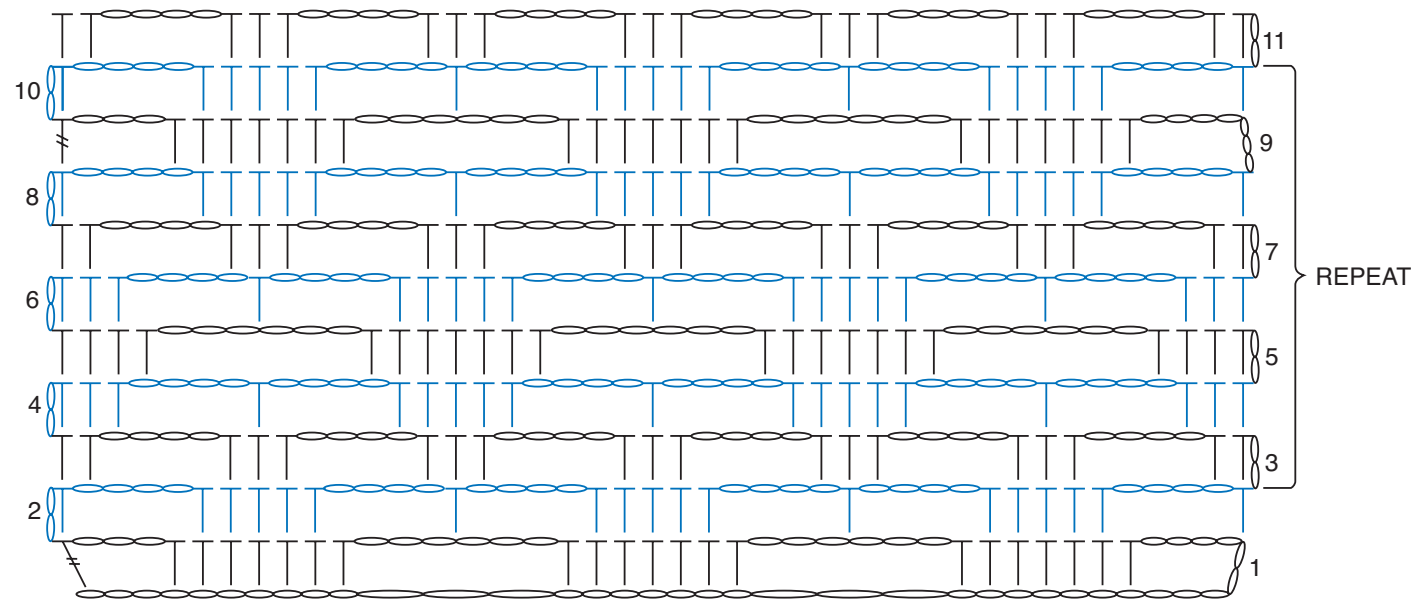
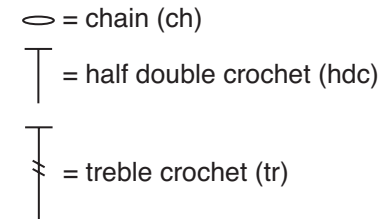
**9th row:** Ch 7 (counts as tr and ch 3). \*1 hdc in next ch-4 sp. 1 hdc in each of next 5 hdc. 1 hdc in next ch-4 sp.\*\* Ch 6. Skip next hdc.\* Rep from \* to \* 16 times more, then

from \* to \*\* once. Ch 3. 1 tr in last hdc. Turn.

**10th row:** Ch 2. 1 hdc in first tr. Ch 4. \*Skip next hdc. 1 hdc in each of next 5 hdc. Ch 4. Skip next hdc. 1 hdc in next ch-6 sp. Ch 4. Rep from \* ending with 1 hdc in 3rd ch of turning ch 7. Turn.

Rep 3rd to 10th rows for pat until work from beg measures approx 20" [51 cm], ending on a 9th row of pat. Fasten off.

## STITCH KEY



REDUCED SAMPLE OF PATTERN