



Version 1



Version 2

## MATERIALS

**Caron® x Pantone™ Bamboo™** (3.5 oz/100 g; 180 yds/165 m)  
Cranberry Meadow (03047) **7 braids**

Size U.S. H/8 (5 mm) crochet hook **or size needed to obtain gauge.**

A - 11-0603

B - 16-1103

C - 18-0629

D - 18-1443

E - 19-1524

 CROCHET | SKILL LEVEL: **EASY**

## ABBREVIATIONS

**Approx** = Approximately

**Beg** = Begin(ning)(s)

**Ch** = Chain(s)

**Dc** = Double Crochet

**Pat** = Pattern

**Rep** = Repeat

**Sc** = Single crochet

**Sp(s)** = Space(s)

**St(s)** = Stitch(es)

**Yoh** = Yarn Over Hook

## MEASUREMENTS

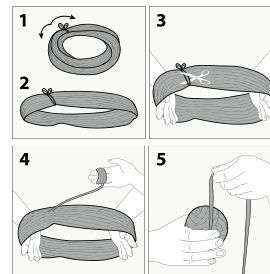
Approx 20" [51 cm] wide x  
70" [178 cm] long

## GAUGE

14 sc and 17 rows = 4" [10 cm]

## Notes:

- Before working with Caron® x Pantone™ Bamboo™ multi-shade yarn braid, separate each color link and wind into 5 separate balls.



- Each color link will be referenced by its Pantone # (see ball band).

- Designate each yarn ball Contrast, A, B, C, D and E as noted in Materials section (or as desired).
- Due to finite amount of yarn in each shade, pattern gauge must be matched to ensure successful results.
- To join new color, work to last loops on hook of first color. Yoh with new color, draw through loops and proceed with new color.
- Ch 3 at beg of row counts as dc.

## INSTRUCTIONS

### Version 1 Stripe Pat:

With A, work 2 rows.  
 \*\*With B, work 2 rows.  
 With C, work 2 rows.  
 With D, work 2 rows.  
 With E, work 4 rows.  
 With D, work 2 rows.  
 With C, work 2 rows.  
 With B, work 2 rows.  
 With A, work 4 rows. \*\* Rep from \*\* to \*\* 5 times more.  
 With B, work 2 rows.  
 With C, work 2 rows.  
 With D, work 2 rows.  
 With E, work 4 rows.  
 With D, work 2 rows.  
 With C, work 2 rows.  
 With B, work 2 rows.  
 With A, work 2 rows.  
 These 140 rows complete Stripe Pat.

### Version 1

With A, ch 78.  
**1st row:** (RS). (1 dc. Ch 3. 1 dc) all in 6th ch from hook. \*Skip next 4 ch. (1 dc. Ch 3. 1 dc) all in next ch. Rep from \* to last 2 ch. Skip next ch. 1 dc in last ch. Turn.  
**2nd row:** Ch 3. \*5 dc in next ch-3 sp. Rep from \* to last st. 1 dc in top of beg ch. Join B. Turn.

**3rd row:** With B, ch 3. Skip next 2 dc. \*(1 dc. Ch 3. 1 dc) all in next dc. Skip next 4 dc. Rep from \* to last 3 sts. Skip next 2 dc. 1 dc in top of beg ch. Turn. First 3 rows of Stripe Pat are complete.  
 Rep 2nd and 3rd rows until all 140 rows of Stripe Pat are complete. Fasten off.

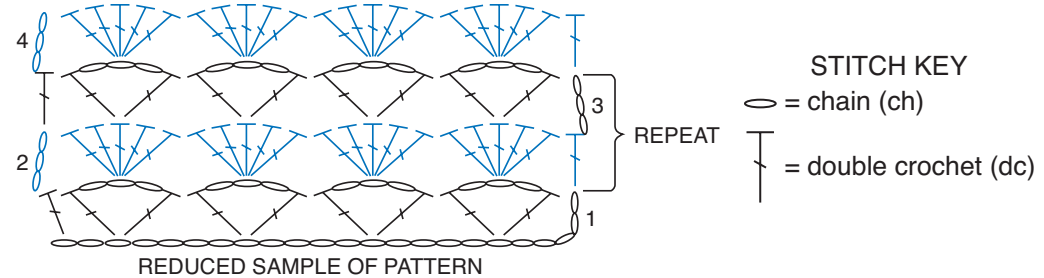
### Version 2 Stripe Pat:

With B, work 2 rows.  
 \*\*With D, work 2 rows.  
 With E, work 2 rows.  
 With A, work 2 rows.  
 With C, work 4 rows.  
 With A, work 2 rows.  
 With E, work 2 rows.  
 With D, work 2 rows.  
 With B, work 4 rows.  
 \*\* Rep from \*\* to \*\* 5 times more.  
 With D, work 2 rows.  
 With E, work 2 rows.  
 With A, work 2 rows.  
 With C, work 4 rows.  
 With A, work 2 rows.  
 With E, work 2 rows.  
 With D, work 2 rows.  
 With B, work 2 rows.  
 These 140 rows form Stripe Pat.

### Version 2

With B, ch 78.  
**1st and 2nd rows:** With B, work as 1st and 2nd rows of Version 1, joining D at end of Row 2.

**3rd row:** With D, work as 3rd row of Version 1. First 3 rows of Stripe Pat are complete.  
 Rep 2nd and 3rd rows until all 140 rows of Stripe Pat are complete. Fasten off.



Version 1



Version 2

