


CROCHET | SKILL LEVEL: **EASY**

## ABBREVIATIONS

**Approx** = Approximately

**Ch** = Chain(s)

**Cont** = Continue(ity)

**Dc** = Double crochet

**Hdc** = Half double crochet

**Rep** = Repeat

**RS** = Right side

**Sc** = Single crochet

**Sc2tog** = Draw up a loop in each of next 2 stitches. Yoh and draw through all loops on hook.

**Sc2togbl** = Draw up a loop in each of next 2 stitches in back loops only. Yoh and draw through all loops on hook.

**Scfl** = Single crochet in front loop only of next stitch

**Scbl** = Single crochet in back loop only of next stitch.

**Sl st** = Slip stitch

**Sp(s)** = Space(s)

**St(s)** = Stitch(es)

**Tog** = Together

**WS** = Wrong side

**Yoh** = Yarn over hook

## MATERIALS

**Caron® x Pantone™** (3.5 oz/100 g; 127 yds/116 m)

**Main Color (MC)** Mushroom Greige (01002)

**2 braids**

**Contrast 1** (A, B, C, D, E) Spicy Blooms (01014)

**3 braids**

**Contrast 2** (F, G, H, I, J) Purple Pops (01017)

**4 braids**

**Contrast 3** (K, L, M, N, O) Provincial Lilac (01013)

**4 braids**

Size U.S. J/10 (6 mm) crochet hook **or size needed to obtain gauge.**

MC - 16-0906

A - 17-1452

B - 17-1462

C - 17-1723

D - 18-1561

E - 18-2436

F - 13-3406

G - 16-3307

H - 18-3838

I - 16-0737

J - 19-4324

K - 11-4302

L - 14-4203

M - 15-3912

N - 16-1412

O - 18-1404

## MEASUREMENTS

Approx 21" x 80" [53.5 x 203 cm].

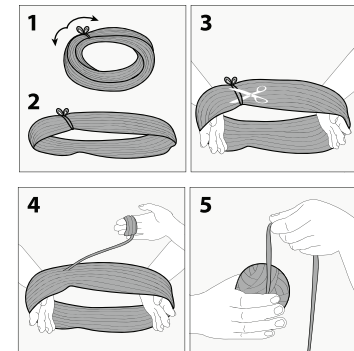
## GAUGE

12 sc and 14 rows = 4" [10 cm].

## INSTRUCTIONS

### Notes:

- Before working with Caron X Pantone multi-shade yarn braid, separate each color link and wind into 5 separate balls.



- Each color link will be referenced by its Pantone # (see label).
  - Designate each different shade of the 5 separate yarn balls as Contrast A, B, C, etc as noted in Materials section (or as desired).
  - Due to finite amount of yarn in each shade, pattern gauge must be matched to ensure successful results.
  - Worked over foundation ch multiple of 20 ch.
  - When joining colors, work to last 2 loops on hook of first color. Draw new color through last 2 loops and proceed.
- With J, work 2 rows.  
With MC, work 2 rows.  
With J, work 2 rows.  
With MC, work 2 rows.  
With K, work 2 rows.  
With L, work 2 rows.  
With M, work 2 rows.  
With N, work 2 rows.  
With O, work 2 rows.  
Rep last 64 rows once more.  
These 128 rows form Stripe Pat.

### Chevron Pat

With MC, ch 139. Break MC. With A, ch 1 to form 140th ch. Total of 140 ch. See diagram on page 3. Cont with A as follows:  
**1st row:** (RS). With A, 1 sc in 2nd ch from hook. 1 sc in each of next 8 ch. 5 sc in next ch. 1 sc in each of next 8 ch. \*Skip next 3 ch. 1 sc in each of next 8 ch. 5 sc in next ch. 1 sc in each of next 8 ch. Rep from \* to last ch. 1 sc in last ch. Turn.  
**2nd row:** Ch 2 (counts as 1 hdc). Skip next 2 sc. 1 scbl in each of next 8 sc. 5 scbl in next sc. 1 scbl in each of next 8 sc. \*Skip next 4 sc. 1 scbl in each of next 8 sc. 5 scbl in next sc. 1 scbl in each of next 8 sc.

### Stripe Pat

With A, work 4 rows.  
With B, work 4 rows.  
With M, work 2 rows.  
With C, work 4 rows.  
With D, work 4 rows.  
With O, work 2 rows.  
With E, work 4 rows.  
With F, work 2 rows.  
With N, work 2 rows.  
With F, work 2 rows.  
With G, work 4 rows.  
With H, work 4 rows.  
With K, work 2 rows.  
With L, work 2 rows.  
With I, work 4 rows.

Rep from \* to last 3 sts. Skip next 2 sc. 1 hdc in last st. Turn.  
First 2 rows of Stripe Pat are complete.  
Keeping cont of Stripe Pat, rep 2nd row 126 times more. Fasten off.

### FINISHING

#### Fill Valleys Along Last Row:

With RS facing, join MC with sl st through back loop of 4th st in 5-scbl cluster at first chevron peak (see diagram on page 3).  
**1st row:** (RS). Ch 1. Skip first ch where MC was joined. 1 scbl in each of next 7 sc. Skip next 4 sc. 1 scbl in each of next 6 sc. Sc2togbl. Turn.  
**\*\*2nd row:** Ch 1. Skip first st. 1 scbl in each of next 4 sc. Skip next 4 sc. 1 scbl in each of next 3 sc. Sc2togbl. Turn.  
**3rd row:** Ch 1. Skip first st. 1 scbl in next sc. Skip next 4 sc. 1 scbl in next sc. Skip next sc. Ch 1. Sl st in first ch of 2nd row. Fasten off.\*\*  
 Rep for all 6 Valleys along last row.

#### Fill Valleys Along First Row:

With RS facing, join MC with sl st through 2nd ch at first chevron peak (see diagram).  
**1st row:** (RS). Ch 1. Skip first ch where MC was joined. 1 sc in each of next 7 ch. Skip next 3 ch. 1 sc in each of next 6 sc. Sc2tog. Turn.  
 Work from \*\* to \*\* as given for Fill Valleys Along Last Row.  
 Rep for all 7 Valleys along first row.

#### Square 1st Corner of Last Row:

With WS facing, join MC with sl st through front loop only of 4th sc at last chevron peak (see diagram).  
**1st row:** (WS). Ch 1 (counts as 1 sc). 1 scfl in each of next 7 sc. Skip next 2 sc. 1 hdc in last st. Turn.  
**2nd row:** Ch 2 (counts as 1 hdc). Skip next 2 sc. 1 scfl in each of next 3 sc. Sc2togbl. Turn.  
**3rd row:** Ch 1 (counts as 1 sc). 1 scfl in next sc. Skip next 2 sc. 1 dc in last st. Fasten off.

### Square 2nd Corner of Last Row:

With RS facing, join MC with sl st through 4th sc at last chevron peak (see diagram).

**1st row:** (RS). Ch 1 (counts as 1 sc). 1 scbl in each of next 7 sc. Skip next 2 sc. 1 hdc in last st. Turn.

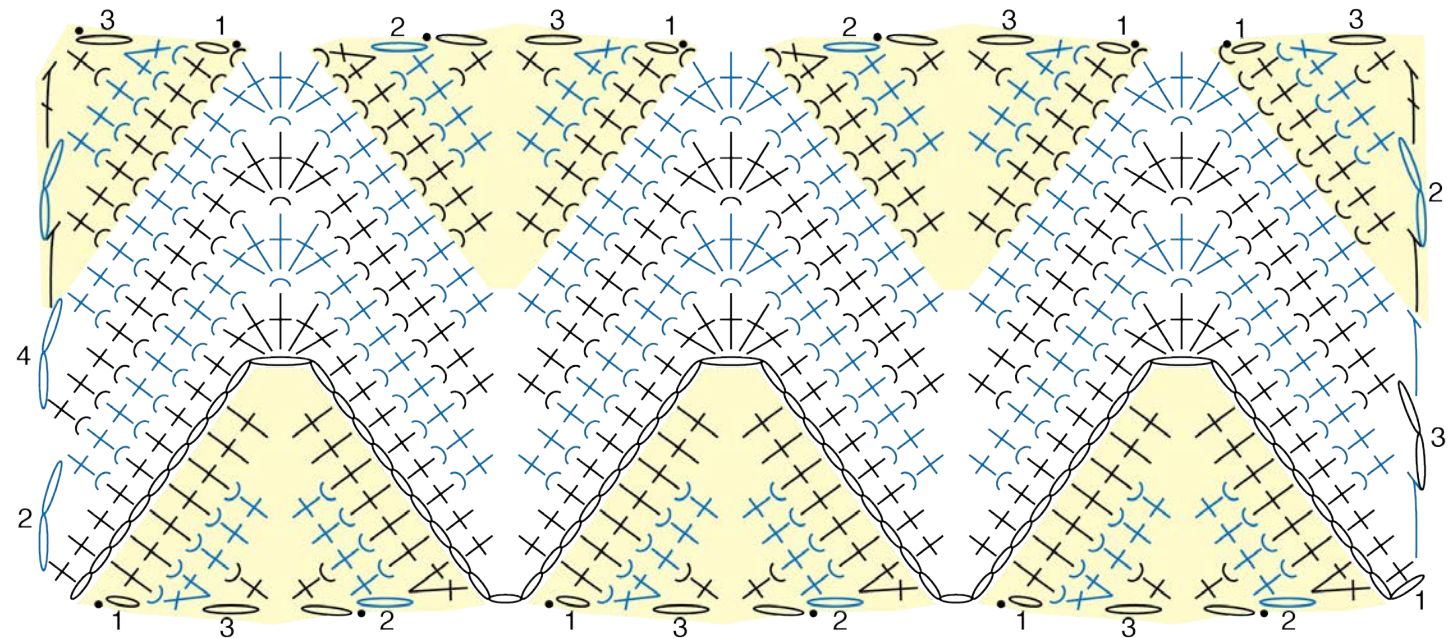
**2nd row:** Ch 2 (counts as 1 hdc). Skip next 2 sc. 1 scbl in each of next 3 sc. Sc2togbl. Turn.

**3rd row:** Ch 1 (counts as 1 sc). 1 scbl in next sc. Skip next 2 sc. 1 dc in last st. Fasten off.

### Edging:

**1st rnd:** (RS). Join MC with sl st at corner. Work sc evenly around working (1 sc. Ch 2. 1 sc) in each corner. Join with sl st to first sc.

**2nd rnd:** Ch 1. 1 sc in each sc around, working (2 sc. Ch 2. 2 sc) in each corner ch-2 sp. Join with sl st to first sc. Fasten off.



REDUCED SAMPLE OF PATTERN

### STITCH KEY

- = chain (ch)
- = slip stitch (sl st)
- + = single crochet (sc)
- ┤ = half double crochet (hdc)
- ┘ = double crochet (dc)
- ⋈ = single crochet 2 together (sc2tog)
- ⤿ = worked in back loop only
- ↯ = worked in front loop only