



MATERIALS

Caron® Cinnamon Swirl Cakes™ (8 oz/227 g; 407 yds/372 m)

Maitai (33004)

1 cake

Size U.S. K/10½ (6.5 mm) Susan Bates® Silvalume® crochet hook **or size needed to obtain gauge.** Susan Bates® stitch marker. Susan Bates® yarn needle.

ABBREVIATIONS

Approx =

Approximately

Beg = Beginning

Ch = Chain(s)

Dc = Double crochet

Pat = Pattern

Rep = Repeat

Rnd(s) = Round(s)

Sc = Single crochet

Sl st = Slip stitch

Sp(s) = Space(s)

St(s) = Stitch(es)

Tr = Treble crochet

MEASUREMENTS

Approx 10" [25.5 cm] deep x 60" [152.5 cm] around.

GAUGE

8 sts (3 dc, Ch 4, 1 tr) and 5 rows = 4" [10 cm] in pat.



CROCHET | SKILL LEVEL: **EASY**

INSTRUCTIONS

Note: Ch 3 at beg of round counts as dc.

Ch 160. Join with st in first ch to form a ring, taking care not to twist chain.

1st rnd: Ch 1. 1 sc in each ch around. Join with sl st in first sc. 160 sc.

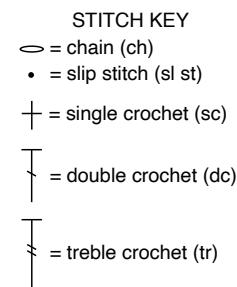
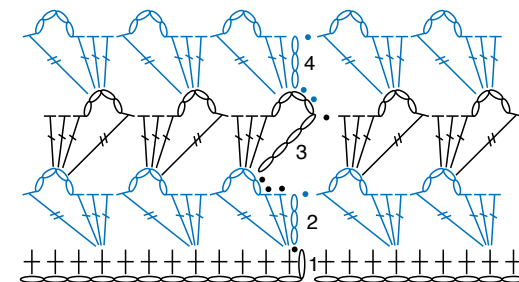
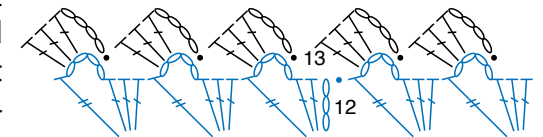
2nd rnd: Ch 3. (2 dc. Ch 4. 1 tr) in same sp as sl st. Skip next 3 sc. *(3 dc. Ch 4. 1 tr) in next sc. Skip next 3 sc. Rep from * around. Join with sl st to top of ch-3. 40 reps of (3 dc, ch 4, tr).

3rd rnd: Sl st in each st to next ch-4 sp. Ch 8 (counts as tr and ch-4 sp). 3 dc in same sp as last sl st. (1 tr. Ch 4. 3 dc) in each ch-4 sp around. Join with sl st in 4th ch of beg ch-8.

4th rnd: Sl st in each st to next ch-4 sp. (Ch 3. 2 dc. Ch 4. 1 tr) in same sp as last sl st *(3 dc. Ch 4. 1 tr) in each ch-4 sp around. Join with sl st in top of beg ch-3.

5th to 12th rnds: Rep 3rd and 4th rnds 4 times more.

Edging: 13th rnd: Sl st in each st to next ch-4 sp. Ch 4. 4 dc in same sp as last sl st. (Sl st. Ch 4. 4 dc) in each ch-4 sp around. Join with sl st in first sl st. Fasten off.



REDUCED SAMPLE OF PATTERN