

## CARON® STRIPES AND CHECKS CROCHET SCARF



CROCHET | SKILL LEVEL: **EASY**

### ABBREVIATIONS

**Approx** = Approximately

**Beg** = Begin(ning)

**Ch** = Chain(s)

**Cont** = Continue

**Dc** = Double crochet

**Rem** = Remain(ing)(s)

**Rep** = Repeat

**RS** = Right side

**St(s)** = Stitch(es)

**WS** = Wrong side

### MEASUREMENTS

Approx 10" [25.5 cm] wide x 100" [254 cm] long, excluding tassels.

### GAUGE

13 dc and 7 rows = 4" [10 cm].

### INSTRUCTIONS

**Note:** Ch 3 at beg of rows counts as dc.

Scarf is worked in Chart Pat in 6 Sections. Change colors in each Section as shown below:

### Chart Pat

**Section 1:** A as Color 1; B as Color 2; C as Color 3; D as Color 4; E as Color 5; F as Color 6.

**Section 2:** B as Color 1; E as Color 2; D as Color 3; A as Color 4; C as Color 5; F as Color 6.

**Section 3:** E as Color 1; C as Color 2; A as Color 3; B as Color 4; D as Color 5; F as Color 6.

**Section 4:** C as Color 1; D as Color 2; B as Color 3; E as Color 4; A as Color 5; F as Color 6.

**Section 5:** D as Color 1; A as Color 2; E as Color 3; C as Color 4; B as Color 5; F as Color 6.

**Section 6:** Work only 1st to 16th rows of Chart - D as Color 1; C as Color 2; B as Color 3; A as Color 4.

With F, ch 44.

**1st row:** (RS) 1 dc in 4th ch from hook (counts as 2 dc). 1 dc in each ch to end of ch. Turn. 42 dc.

**2nd row:** Ch 3. 1 dc in each dc to end of row. Turn.

Rep 2nd row twice more. Break F. Join A.

### MATERIALS

**Caron® Simply Soft** (6 oz /170.1 g; 315 yds/288 m)

**Contrast A** Victorian Rose (39721) **1 ball**

**Contrast B** Gold (39782) **1 ball**

**Contrast C** Dark Sage (39707) **1 ball**

**Contrast D** Dark Country Blue (39711) **1 ball**

**Contrast E** Fuchsia (39764) **1 ball**

**Caron® Simply Soft Speckle** (5 oz/141 g; 235 yds/215 m)

**Contrast F** Seashell (61009) **2 balls**

Size U.S. H/8 (5 mm) crochet hook **or size needed to obtain gauge.**

## CARON® STRIPES AND CHECKS CROCHET SCARF

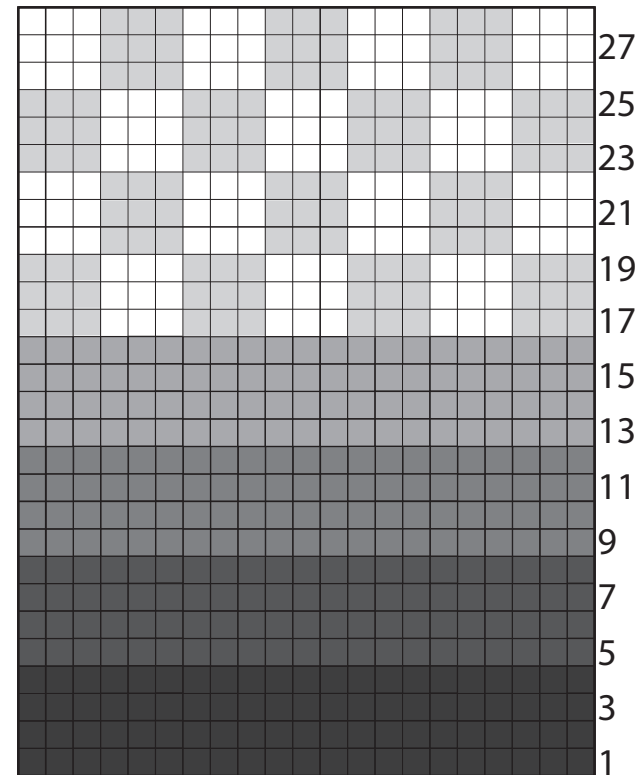
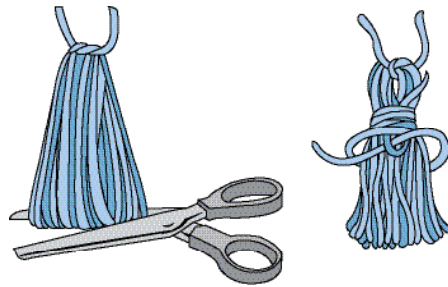
Proceed in Chart Pat (Section 1), noting that each square of chart is equal to 2 dc, *reading RS rows from right to left and WS rows from left to right*. Carry color not in use loosely across top of work and work sts around it. Change colors by drawing contrast color through last 2 loops on hook and proceed with new color.

Cont working Chart Pat (all rows are worked in dc) until all 6 Sections of Chart Pat are complete. Break A. Join F.

**Next 4 rows:** With F, ch 3. 1 dc in each dc to end of row. Turn. Fasten off at end of 4th row.

### Tassels (make 10 with F)

Cut a piece of cardboard 6" [15 cm] wide. Wind yarn around cardboard 60 times. Break yarn leaving a long end and thread end through needle. Slip needle through all loops and tie tightly. Remove cardboard and wind yarn tightly around loops 1" [2.5 cm] below fold. Fasten securely. Cut through rem loops and trim ends evenly. Sew 5 Tassels evenly spaced to each end of Scarf.



-  Color 1
-  Color 2
-  Color 3
-  Color 4
-  Color 5
-  Color 6

Start here