



CROCHET | SKILL LEVEL: INTERMEDIATE

ABBREVIATIONS

Approx = Approximately

Beg = Begin(ning)

Ch = Chain(s)

Hdc = Half double crochet

Hdcbl = Half double crochet in back loop only

Rem = Remaining

Rep = Repeat

Rnd(s) = Round(s)

RS = Right side

Sc = Single crochet

Sc2tog = Draw up a loop in each of next 2 stitches. Yoh and draw through all loops on hook.

Sl st = Slip stitch

St(s) = Stitch(es)

Tog = Together

WS = Wrong side

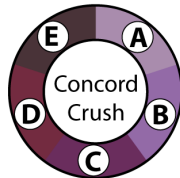
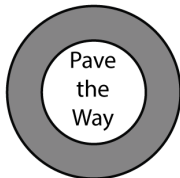
Yoh = Yarn over hook

MATERIALS

Caron® Colorama™ O'Go™ (6.4 oz/180 g; 228 yds/208 m)

Main Color (MC) Pave The Way (68022) **1 O'Go**

Contrast A, B, C, D and E
Concord Crush (68019) **1 O'Go**



Sizes U.S. I/9 (5.5 mm) and U.S. J/10 (6 mm) crochet hooks **or size needed to obtain gauge.** Yarn needle. Locking stitch marker.

SIZE

One size to fit Adult.

GAUGE

10 sc and 11 rows = 4" [10 cm] with larger hook.

INSTRUCTIONS

Notes:

- To begin working with the O'Go format, carefully cut plastic tie where the ends of the O'Go meet.
- Pull tie to remove.

- For this pattern, colors can be easily separated by gently pulling apart and cutting at the color transition. Each color is ready to use. Follow color guide shown in Materials section (Contrast A, B, C, D and E). You may find it helpful to place each color section in its own resealable (zip lock) bag and label each bag A, B, C, D and E.
- Carry color not in use loosely across top of rnd and work sts around it.
- Change colors by drawing new color through last 2 loops on hook and proceed with new color, keeping color change to WS of work.
- Join all rnds with sl st to first sc.
- Ch 1 at beg of each rnd.
- Ch 2 at beg of each row **does not** count as st.

HAT

Ribbing: With MC and smaller hook, ch 12.

1st row: (RS). 1 hdc in 3rd ch from hook. 1 hdc in each ch to end of chain. Turn. 10 sts.

2nd row: Ch 2. 1 hdcbl in each st to end of row. Turn.

Rep last row until work from beg measures 19" [48 cm] when unstretched, ending on a WS row.

Do not fasten off.

Join last row and first row tog with 1 row of sl st to form tube. **Do not** fasten off.

Beg working in rnds:

Set-up rnd: (RS). With larger hook, ch 1. Working across side edge of ribbing, work 52 sc evenly around. Join. Place marker at end of rnd.

Work chart as follows:

1st to 12th rnds: Ch 1. Working in sc, work Chart to end of chart, *reading rnds from right to left* and noting 4-st rep will be worked 13 times. Join.

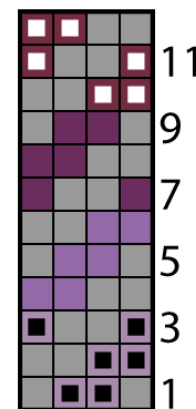
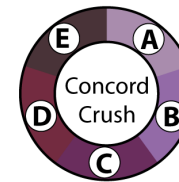
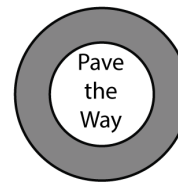
Shape top: 1st rnd: Ch 1. With MC, 1 sc in first st. *With E, sc2tog. With MC, 1 sc in each of next 2 sts. Rep from * to last 3 sts. With E, sc2tog. With MC, 1 sc in last st. Join. 39 sts.

2nd rnd: With E, ch 1. 1 sc in first st. *With MC, sc2tog. With E, 1 sc in next st. Rep from * to last 2 sts. With MC, sc2tog. Join. Break MC. 26 sts.

3rd rnd: With E, ch 1. *Sc2tog. Rep from * around. Join. 13 sts.

4th rnd: Ch 1. (Sc2tog) 3 times. 1 sc in next st. (Sc2tog) 3 times. Join. 7 sts.

Fasten off, leaving a long end. Draw end tightly through rem sts and secure tightly.



4-st rep Start Here

KEY

- = Main Color (MC)
- = Contrast A
- = Contrast B
- = Contrast C
- = Contrast D

Pompom: With 1 strand each of MC, A, B, C, D, and E held tog, wind yarn around 4 fingers approx 25 times. Remove from fingers and tie tightly in center. Cut through each side of loops. Trim to a smooth round shape. Sew pompom to top of Hat.

