



CROCHET | SKILL LEVEL: INTERMEDIATE

ABBREVIATIONS

Approx =

Approximately

Beg = Beginning

Ch = Chain(s)

Cont = Continue(ity)

Dc = Double crochet

Pat = Pattern

Rem = Remain(ing)(s)

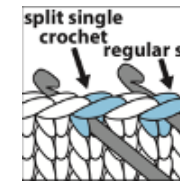
Rep = Repeat

Rnd(s) = Round(s)

RS = Right side

Sc = Single crochet

Splsc = Split single
crochet: work sc
between 'legs' of
stitch (splitting stitch)
instead of through
top loops



Sc2togspl = Draw up
a loop in each of next
2 sc between 'legs' of
stitch. Yoh and draw
through all 3 loops
on hook

Sl st = Slip stitch

Sp(s) = Space(s)

St(s) = Stitch(es)

Tog = Together

WS = Wrong side

Yoh = Yarn over hook

MATERIALS

Caron® Simply Soft® (Solids: 6 oz/170 g; 315 yds/288 m;
Heathers: 5 oz/141.7 g; 250 yds/228 m)

Contrast A Dk Country Blue (9711) **1 ball**

Contrast B Country Blue (9710) **1 ball**

Contrast C Lt Country Blue (9709) **1 ball**

Contrast D Lt Country Peach (9737) **1 ball**

Contrast E Off White (9702) **1 ball**

Contrast F Gray Heather (H9509) **1 ball**

Contrast G Woodland Heather (H9503) **1 ball**

Sizes U.S. G/6 (4 mm) and U.S. 7 (4.5 mm) crochet hook **or size needed to obtain gauge.** Stitch marker

SIZE

One size to fit Adult.

GAUGE

13 sc and 19 rows = 4" [10 cm] with
larger hook in pat.

INSTRUCTIONS

Notes: When working from chart, carry yarn not in use loosely across top of work. Work next row over strand of yarn which is not in use.

Do not join at ends of rnds unless otherwise stated. Cont working in spiral placing marker on first st of rnd for easier counting.

Ribbing: With A and **smaller** hook, ch 12.

1st row: (RS). 1 sc in 2nd ch from hook and each ch to end of chain. Turn. 11 sc.

2nd row: Ch 1. *Working in back loops only*, 1 sc in each sc to end of row. Turn.

Rep last row until work from beg, when slightly stretched, measures 19½" [49.5 cm]. **Do not** fasten off.

Change to **larger** hook and proceed as follows:

Set-up rnd: Ch 1. Work 72 sc across longer side of ribbing. Join with sl st to first sc. PM for beg of rnd.

Beg working Chart (shown right), noting 8-st rep will be worked 9 times, *reading rnds from right to left*.

1st rnd: Ch 1. 1 splsc in each sc around.

Rep last rnd, and cont working Chart until 28th rnd of Chart is complete.

Break all colors but E.

Shape crown: 1st rnd: Ch 1. *1 splsc in each of next 7 sts. Sc2tog. Rep from * around. 64 sts.

2nd rnd: Ch 1. *1 splsc in each of next 6 sts. Sc2togspl. Rep from * around. Join. 56 sts.

3rd rnd: Ch 1. *1 splsc in each of next 5 sts. Sc2togspl. Rep from * around. Join. 48 sts.

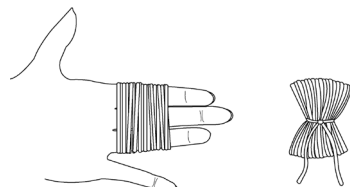
4th rnd: Ch 1. *1 splsc in each of next 4 sts. Sc2togspl. Rep from * around. Join. 40 sts.

5th rnd: Ch 1. *1 splsc in each of next 3 sts. Sc2togspl. Rep from * around. Join. 32 sts.

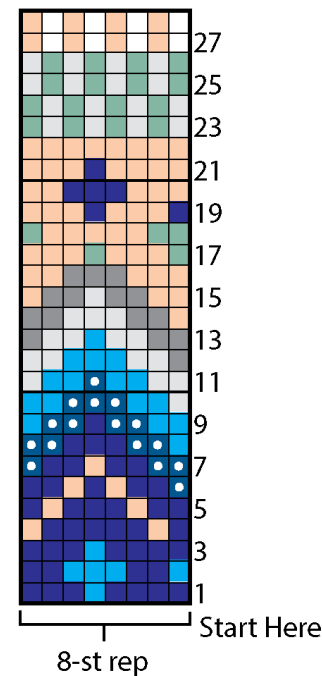
6th rnd: Ch 1. *1 splsc in each of next 2 sts. Sc2togspl. Rep from * around. Join. 24 sts.

Break yarn, leaving a long end. Thread end through rem sts. Pull tightly. Fasten securely. Sew ends of ribbing tog.

Pompom: Wind 2 strands of A, 1 strand each D and G around 3 fingers 40 times. Tie tightly in the middle and leave a long end for attaching to Hat. Cut loops at both ends and trim to smooth round shape. Sew securely to top of Hat.



Chart



Key

- = With A, 1 splsc
- = With B, 1 splsc
- = With C, 1 splsc
- = With D, 1 splsc
- = With E, 1 splsc
- = With F, 1 splsc
- = With G, 1 splsc