

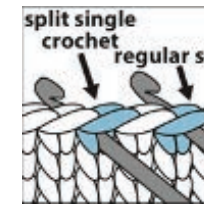


CROCHET | SKILL LEVEL: INTERMEDIATE

## ABBREVIATIONS

**Approx** = Approximately  
**Beg** = Beginning  
**Ch** = Chain(s)  
**Cont** = Continue(ity)  
**Dc** = Double crochet  
**Dec** = Decrease(s)  
**Pat** = Pattern  
**Rem** = Remain(ing)(s)  
**Rep** = Repeat  
**Rnd(s)** = Round(s)  
**RS** = Right side  
**Sc** = Single crochet

**Splsc** = Split single crochet: work sc between 'legs' of stitch (splitting stitch) instead of through top loops



**Sc2togspl** = Draw up a loop in each of next 2 sc between 'legs' of stitch. Yoh and draw through all 3 loops on hook  
**Sl st** = Slip stitch  
**Sp(s)** = Space(s)  
**St(s)** = Stitch(es)  
**Tog** = Together  
**WS** = Wrong side  
**Yoh** = Yarn over hook

## MATERIALS

Caron® Simply Soft® (Solids: 6 oz/170 g; 315 yds/288 m; Heathers: 5 oz/141.7 g; 250 yds/228 m)

<b>Contrast A</b> Dk Country Blue (9711)	1 ball
<b>Contrast B</b> Country Blue (9710)	1 ball
<b>Contrast C</b> Lt Country Blue (9709)	1 ball
<b>Contrast D</b> Lt Country Peach (9737)	1 ball
<b>Contrast E</b> Off White (9702)	1 ball
<b>Contrast F</b> Gray Heather (H9509)	1 ball
<b>Contrast G</b> Woodland Heather (H9503)	1 ball

Sizes U.S. F/5 (3.75 mm) and U.S. G/6 (4 mm) crochet hooks **or size needed to obtain gauge.** Stitch marker. Stitch holder.

## SIZE

One size to fit palm 7½" [19 cm] circumference.

## GAUGE

15 sc and 20 rows = 4" [10 cm] with larger hook in pat.

## INSTRUCTIONS

### MITTENS

**Notes:** When working from chart, carry yarn not in use loosely across top of work. Work next row over strand of yarn which is not in use.

**Do not** join at ends of rnds unless otherwise stated. Cont working in spiral placing marker on first st of rnd for easier counting.

### RIGHT MITTEN

**\*\*Cuff:** With A and smaller hook, ch 12.

**1st row:** (RS). 1 sc in 2nd ch from hook and each ch to end of chain. Turn. 11 sc.

**2nd row:** Ch 1. Working in back loops only, 1 sc in each sc to end of row. Turn.

Rep last row until work, when slightly stretched, from beg measures 7½" [19 cm]. **Do not** fasten off.

Change to larger hook and proceed as follows:

**Set-up rnd:** Ch 1. Work 32 sc across longer side of ribbing. Join. PM for beg of rnd.

Beg working Chart I (shown right), *reading rnds from right to left*.

**1st rnd:** Ch 1. 1 splsc in each st around.

Rep last rnd, and cont working Chart until 11th rnd of Chart is complete.\*\*

**Thumb opening: Next rnd:** Pat across 16 sts. Ch 7. Skip next 7 sts. Pat to end of rnd.

**Next rnd:** Pat across 16 sts. With C, 1 sc in each of next 7 ch. Pat to end of rnd.

\*\*\*Cont working Chart I to end of chart, noting decreases on 28th to 33rd rnds of chart. Fasten off leaving a long end. Fold Mitten flat. Sew top seam with yarn end.

**Thumb:** Join A with sl st to first skipped sc of Thumb opening. Ch 1. 1 sc in same sp as sl st. 1 scspl in each of next 6 sts. Working in rem loops of ch 7, 1 sc in each of next 7 ch. Join. 14 sc.

**Next rnd:** Ch 1. 1 scspl in each sc around.

Rep last rnd until Thumb measures 2" [5 cm].

**Next rnd:** (Sc2togspl) 7 times. 7 sts.

**Next rnd:** (Sc2togspl) 3 times. 1 scspl in next st. Join. Fasten off.

Thread end through rem 4 sts. Gather tightly and fasten securely\*\*\*

## LEFT MITTEN

Work from \*\* to \*\* as given for Right Mitten, working Chart II in place of Chart I.

**Thumb opening: Next rnd:** Pat across 9 sts. Ch 7. Skip next 7 sts. Pat to end of rnd.

**Next rnd:** Pat across 9 sts. With C, 1 sc in each of next 7 ch. Pat to end of rnd.

Work from \*\*\* to \*\*\* as given for Right Mitten.

Chart I

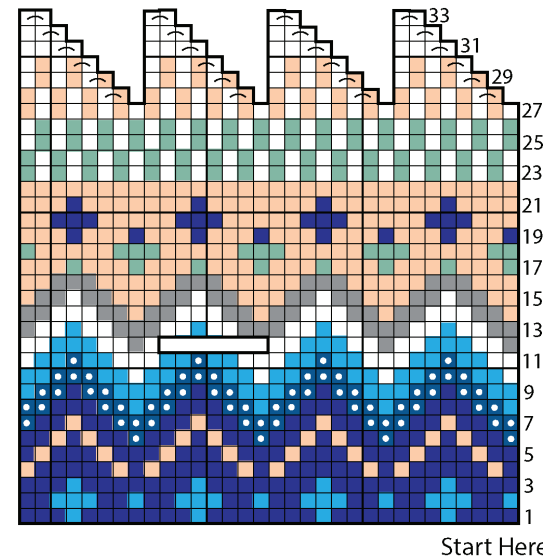
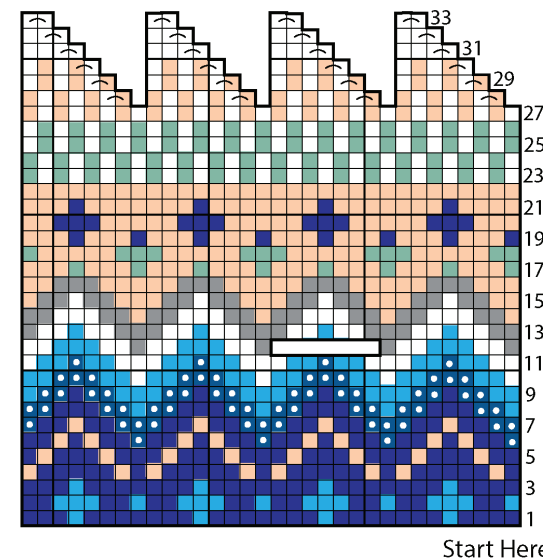


Chart II



## Key

- = With A, splsc
- = With B, splsc
- = With C, splsc
- = With D, splsc
- = With E, splsc
- = With F, splsc
- = With G, splsc
- ⊞ = sc2togspl