



MATERIALS

Caron® x Pantone™ (3.5 oz/100 g; 127 yds/116 m)

Main Color (MC) Lapis (01025)

2 braids

Contrast Moody Pumpkins (01021)

3 braids

Size U.S. J/10 (6 mm) crochet hook **or size needed to obtain gauge.**

MC - 17-5034

A - 18-1163

B - 19-4340

C - 19-4024

D - 19-0915

ABBREVIATIONS

Approx =

Approximately

Beg = Begin(ning)

Ch = Chain(s)

Hdc = Half double
crochet

Rep = Repeat

RS = Right side

St(s) = Stitch(es)

Tog = Together

WS = Wrong side



CROCHET | SKILL LEVEL: **INTERMEDIATE**

MEASUREMENTS

Approx 17" [43 cm] deep x 48" [122 cm] around.

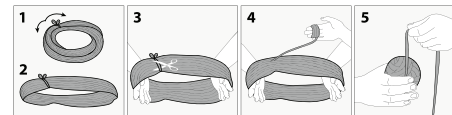
GAUGE

12 hdc and 8 rows = 4" [10 cm].

INSTRUCTIONS

Notes:

- Before working with Caron® x Pantone™ multi-shade yarn braid, separate each color link and wind into 5 separate balls.



- Each color link will be referenced by its Pantone # (see ball band)
- Designate each different shade of the 5 separate yarn balls as Contrast A, B, C, D and E as noted in Materials section (or as desired).
- Due to finite amount of yarn in each shade, pattern gauge must be matched to ensure successful results
- Ch 2 at beg of row does not count as st.

- When working from chart and joining new color, work to last 3 loops on hook. Draw new color through last 3 loops, then proceed in new color.
- Carry color when not in use loosely across top of previous row and work sts around it to avoid stranding.

With MC, ch 54.

1st row: (RS). 1 hdc in 3rd ch from hook. 1 hdc in each ch to end of ch. Turn. 52 hdc.

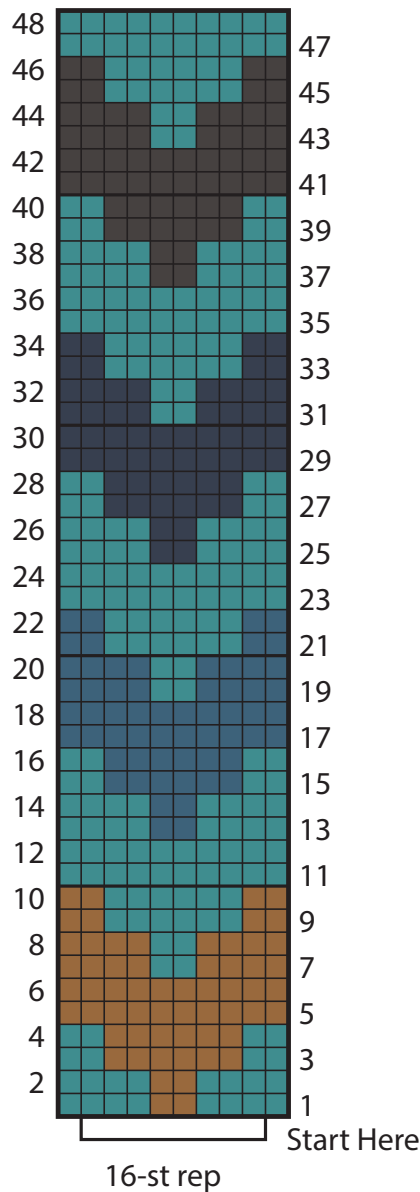
2nd row: (WS). Ch 2. 1 hdc in each hdc to end of row. Turn.

Beg working Chart in hdc, **reading RS** rows from **right** to left and **WS** rows from **left** to right, noting 16-st rep will be worked 3 times, and each block on Chart represents 2 hdc. Chart is shown on page 2.

Work 48 rows of Chart once, then rep Rows 1 to 46 of Chart. Fasten off. Sew ends of Cowl tog.



Chart



Key

Note: 1 block = 2 hdc

- = MC
- = Contrast A
- = Contrast B
- = Contrast C