



Version 1

Version 2

## MATERIALS

**Caron® x Pantone™** (3.5 oz /100 g; 127 yds/116 m)

**Version 1 or Version 2:**

**Main Color (MC)** Coconut Cream (01001) **1 braid**

**Contrast 1** Fuchsia Foliage (01020) **1 braid**

**Contrast 2** Frozen Berry (01022) **1 braid**

Size U.S. J/10 (6 mm) crochet hook **or size needed to obtain gauge.**  
Stitch marker.

MC - 11-4302

## Version 1

A - 13-4103	B - 17-5034	C - 17-4540	D - 19-4044	E - 18-2929
F - 18-2436	G - 17-1462	H - 13-0442	I - 16-5806	J - 19-0315

## Version 2

A - 19-4044	B - 18-2436	C - 17-5034	D - 13-4103	E - 13-0442
F - 18-2929	G - 19-0315	H - 17-1462	I - 16-5806	J - 17-4540



CROCHET | SKILL LEVEL: **INTERMEDIATE**

## ABBREVIATIONS

**Approx** = Approximate(ly)

**Beg** = Begin(ning)

**Bobble** = (Yoh and draw up a loop) 3 times in next stitch. Yoh and draw through all loops on hook. Ch 1 to close bobble

**Cont** = Continue(ity)

**Hdc** = Half double crochet

**Pat** = Pattern

**PM** = Place marker

**Rep** = Repeat

**Rnd(s)** = Round(s)

**Sc** = Single crochet

**Sl st** = Slip stitch

**Sp(s)** = Space(s)

**St(s)** = Stitch(es)

**Yoh** = Yarn over hook

## MEASUREMENTS

Approx 20" [51 cm] deep x 27" [68.5 cm] around.

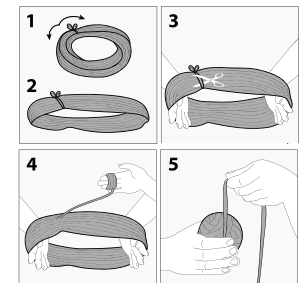
## GAUGE

12 sc and 14 rows = 4" [10 cm]

## INSTRUCTIONS

### Notes:

- Before working with Caron® x Pantone™ multi-shade yarn braid, separate each color link and wind into 5 separate balls for each braid.



- Each color link will be referenced by its Pantone™ color # (see ball band)

- Designate each yarn ball Contrast, A, B, C, D, E, F, G, H, I, and J as noted in Materials section (or as desired).
- Due to finite amount of yarn in each shade, pattern gauge must be matched to ensure successful results
- **Do not** break MC, carry color not in use loose across side of work.
- To change colors, work to last 2 loops on hook of first color. Draw new color through last 2 loops and proceed with new color.
- Ch 2 at beg of rnd does not count as st.

With MC, ch 96 (multiple of 16 ch). Join with sl st to first ch, taking care not to twist chain. PM for beg of rnd. See diagram on page 3.

**1st rnd:** Ch 2. 1 hdc in each ch around. Join A with sl st to first hdc. 96 hdc.

**2nd rnd:** With A, ch 1. *Working in back loops only*, 1 sc in same sp as last sl st. 1 sc in next hdc. \*Ch 2. Skip next 6 hdc. [(1 dc. Ch 1) 6 times. 1 dc] all in next hdc – Shell made. Ch 2. Skip next 6 hdc.\*\* 1 sc in each of next 3 hdc. Rep

from \* 4 times more, then from \* to \*\* once. 1 sc in last sc. Join with sl st to first sc.

**3rd rnd:** Ch 1. *Working in both loops*, 1 sc in same sp as last sl st. \*Ch 2. Skip next (sc, ch 2, dc). (Bobble in next ch-1 sp. Ch 1. Skip next dc) 6 times. Ch 1. Skip next (ch 2, sc).\*\* 1 sc in next sc. Rep from \* 4 times more, then from \* to \*\* once. Join MC with sl st to first sc. Break A.

**4th rnd:** With MC, ch 2. 1 hdc in same sp as sl st. \*\*1 hdc in each of next 2 ch. (1 hdc in next Bobble. 1 hdc in next ch-1 sp) 5 times. 1 hdc in next bobble. 1 hdc in each of next 2 ch.\*\* 1 hdc in next sc. Rep from \* 4 times more, then from \* to \*\* once. Join B with sl st to first hdc.

**5th rnd:** With B, ch 4 (counts as dc and ch 4). [(1 dc. Ch 1) twice. 1 dc] in same sp as sl st. \*Ch 2. Skip next 6 hdc. *Working in back loops only*, 1 sc in each of next 3 hdc. Ch 2. Skip next 6 hdc.\*\* Shell in next hdc. Rep from \* 4 times more, then from \* to \*\* once. (1 dc. Ch 1) 3 times in first hdc. Join with sl st to 3rd ch of ch 4.

**6th rnd:** Sl st in first ch-1 sp. Ch 2 (does not count as st). Bobble in same sp as last sl st. (Ch 1. Bobble in next ch-1 sp) twice. \*Ch 2. Skip next (dc, ch 2, sc). 1 sc in next sc. Ch 2. Skip next (sc, ch 2, dc).\*\* (Bobble in next ch-1 sp. Ch 1. Skip next dc) 5 times. Bobble in next ch-1 sp. Rep from \* 5 times more, then from \* to \*\* once. (Bobble in next ch-1 sp. Ch 1. Skip next dc) 3 times. Join MC with sl st to top of first Bobble.

**7th rnd:** With MC, ch 2 (does not count as st). 1 hdc in same sp as last sl st. (1 hdc in next ch-1 sp. 1 hdc in next bobble) twice. \*1 hdc in each of next 2 ch. 1 hdc in next sc. 1 hdc in each of next 2 ch. \*\* (1 hdc in next Bobble. 1 hdc in next ch-1 sp) 5 times. 1 hdc in next Bobble. Rep from \* 5 times more, then from \* to \*\* once. (1 hdc in next Bobble. 1 hdc in next ch-1 sp) 3 times. Join C with sl st to top of first Bobble. Rep 2nd to 7th rnds to form pat.

Cont in pat, changing colors in same manner in the following sequence:

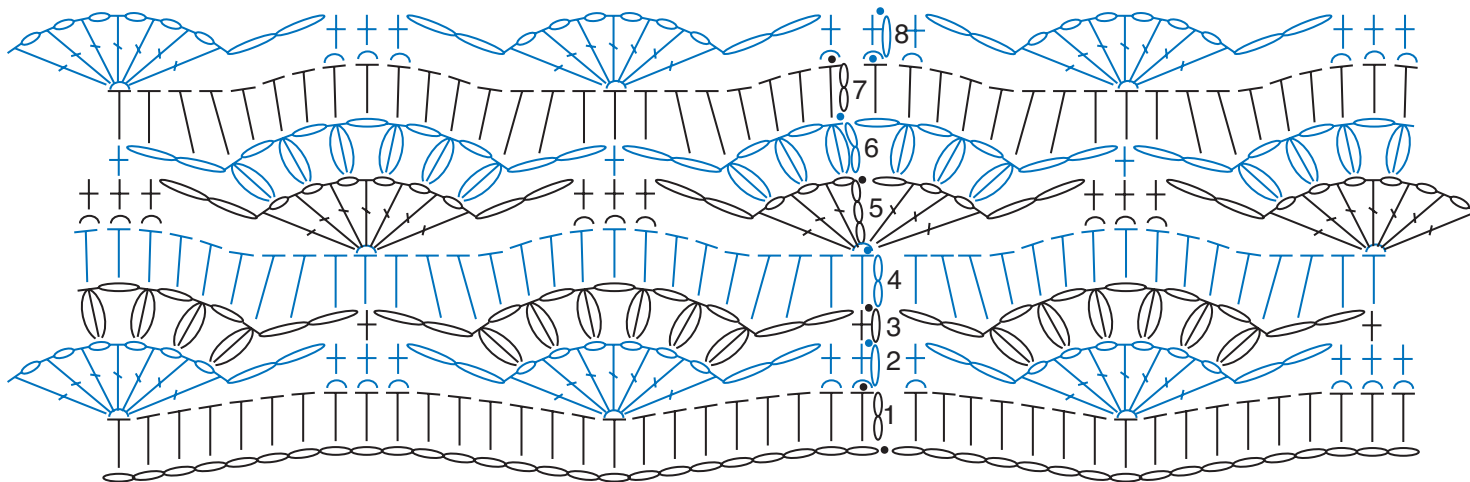
2 rnds with C. 1 rnd with MC.  
2 rnds with D. 1 rnd with MC.

2 rnds with E. 1 rnd with MC.  
2 rnds with F. 1 rnd with MC.  
2 rnds with G. 1 rnd with MC.  
2 rnds with H. 1 rnd with MC.  
2 rnds with I. 1 rnd with MC.  
2 rnds with J. 1 rnd with MC.  
Fasten off.

VERSION 1



VERSION 2



REDUCED SAMPLE OF PATTERN

## STITCH KEY

- = chain (ch)
- = slip stitch (sl st)
- † = single crochet (sc)
- ⌈ = half double crochet (hdc)
- ⌋ = double crochet (dc)
- ⦶ = Bobble
- ⌈⌋ = Shell
- ⌋ = worked in back loop