



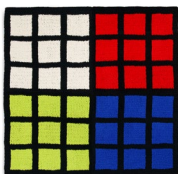
### MATERIALS

**Bernat® Alize® Blanket EZ Graph-it™** (6.4 oz/180 g; 15 yds/13.5 m)

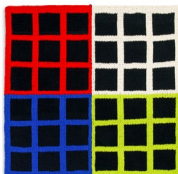
Charcoal / Lava (71029)	<b>3 balls</b>
Charcoal / Cobalt (71022)	<b>3 balls</b>
Charcoal / Cream (71018)	<b>3 balls</b>
Charcoal / Lime (71019)	<b>3 balls</b>

Yarn needle

Side 1



Side 2



CRAFT | SKILL LEVEL: **EASY**

### MEASUREMENT

Approx 55" [139.5 cm] square.

### GAUGE

8 stitches = 4" [10 cm].

### INSTRUCTIONS

#### Notes:

- Yarn consists of "paired" loops, one loop in color "A" and one loop in color "B"
- Only one loop from each paired loop is worked with at a time
- One side of project is worked in its entirety, then work is flipped to complete opposite side.
- Project is reversible with shade placement reversed on opposite side
- Loops are always pulled through stitches from back to front of work.
- An unworked loop is referred to as a "loop".
- A loop which has been worked is referred to as a "stitch".

- Step by step photos shown throughout pattern reference the Bernat Alize Blanket EZ Graph-It Reversible Sunshine Chair Pad design.
- Watch our [video tutorial](#) for step by-step instructions.

- **To join a new ball:** Cut thread at base of next unworked loop (thread used to create the loop) to create a yarn 'tail'. Cut thread at base of first loop of next color to create a yarn "tail". Tie tails together, and weave in ends. Continue with new color.
- Blanket is worked in 2 panels and seamed together in FINISHING

**POUF** (make 1 panel in each shade for a total of 6 panels)  
Before beginning, designate one loop color as "A" and one loop color as "B".

**2-color chain:** Count 56 paired loops from end of yarn (each paired loop contains one loop in color “A” and one loop in color “B”).

Arrange loops on working surface with all “A” loops pointing up and all “B” loops pointing down and working yarn (yarn feeding from ball) at right.



**“A” chain row:** Working from **left** to **right** and with “A” loops only, pull 2nd loop through 1st loop. Pull 3rd loop through 2nd loop. Pull 4th loop through 3rd loop. Continue in this manner to end of row. All 56 loops have been worked with last loop remaining “live” at end of row.



**“B” chain row:** With “B” loops only, work as given for “A” chain row.



This completes the 2-color chain.



### FIRST SIDE

**Note:** Only one loop from each paired loop will be worked on First Side. Remaining loops will be worked after First Side is complete to create Second Side.

Begin Chart on page 5.

### To read Chart:

- Rows alternate being worked from **right** to left and **left** to right
- Rows are read in the same direction in which the row is worked
- Each square of Chart represents one stitch

- Color of square represents which color of paired loop is to be used

**1st row:** (Worked across “A” side only of 2-color chain). Working from **right** to **left** and following color changes from first row of Chart, pull next loop from working yarn up through second chain. (Skipped first chain already has live loop which counts as first stitch of foundation row). \*Pull next loop from working yarn up through next chain. Repeat from \* to end of chain. Leave all remaining unworked loops at back of work for second side. **Do not** turn work.



**2nd row:** Working from **left** to **right** and following color changes in Chart, pull next loop from working yarn up through next stitch of previous row. Continue in this manner to end of row. **Do not** turn work.



**3rd row:** Working from **right** to **left** and following color changes in Chart, pull next loop from working yarn up through next stitch of previous row. Continue in this manner to end of row. **Do not** turn work.



Continue as established to end of Chart.



**Bind off row:** Working in same direction as last row, pull 2nd stitch through 1st stitch. Pull 3rd stitch through 2nd stitch. Pull 4th stitch through 3rd stitch. Continue in this manner to end of row.



Cut working yarn approximately 3 loops past last stitch. Carefully cut thread at base of these loops to release the loop and create a smooth yarn 'tail'. With same color tail as last stitch, pull tail through last loop of Bind off row. Leave remaining tail unworked for second side.



## SECOND SIDE

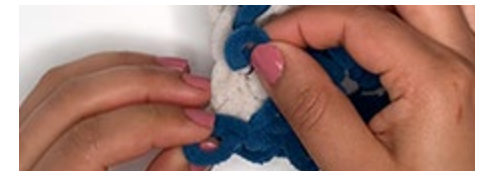
### Notes:

- Second Side is worked from the bottom up in vertical columns.
- First stitch of every column is worked into the remaining "B" side of the 2-color chain at bottom of work.
- Following Chart is not required for Second Side. Remaining loops are already in Chart position from completion of First Side.

Turn work so that First Side is facing down, remaining unworked loops are facing up and 2-color chain is at bottom.

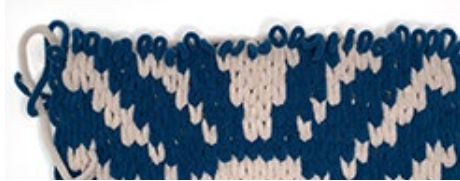


**1st column:** (Worked vertically from bottom to top). Beginning at bottom left corner, pull first loop up through first "B" chain. This creates first stitch of column. \*Pull next loop (loop directly above stitch just worked) up through last stitch. Continue in this manner to end of column.



**2nd and all remaining columns:** Using next loops to the right of last column, work as given for 1st column.

All loops have now been worked with one row of loops left "live" at top of work for Bind off row.



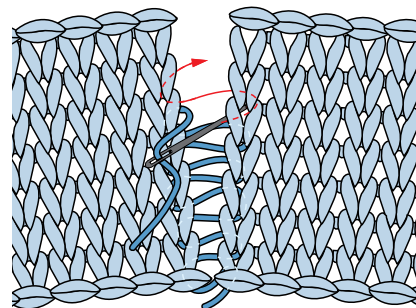
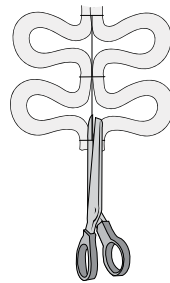
**Bind off row:** Beginning at opposite side from yarn tails and with remaining loops, pull 2nd stitch through 1st stitch. Pull 3rd stitch through 2nd stitch. Pull 4th stitch through 3rd stitch. Continue in this manner to end of row.



Pull "B" color tail through last loop of Bind off row. Tie "A" and "B" tails together close to work to secure. Tuck tails to interior of work.

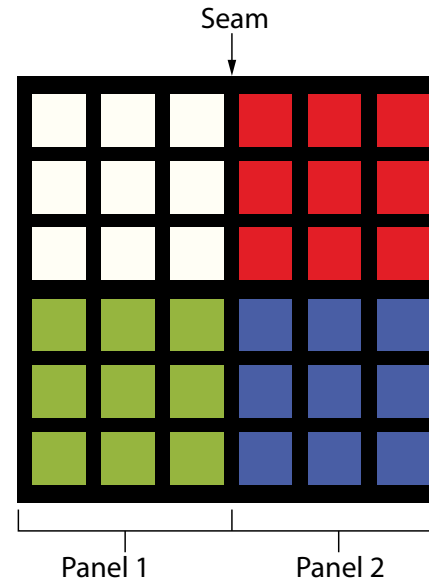
### FINISHING

Align edges of Panels with right sides facing out as show in Assembly diagram. Cut base of loops of A and B carefully to separate and create 2 straight lengths of yarn approx 74" [188 cm] long. Thread strand of charcoal yarn onto needle. Seam Panels together along edges, working between layers of First and Second side, catching a base of the loop on either side of the seam as shown in diagram.

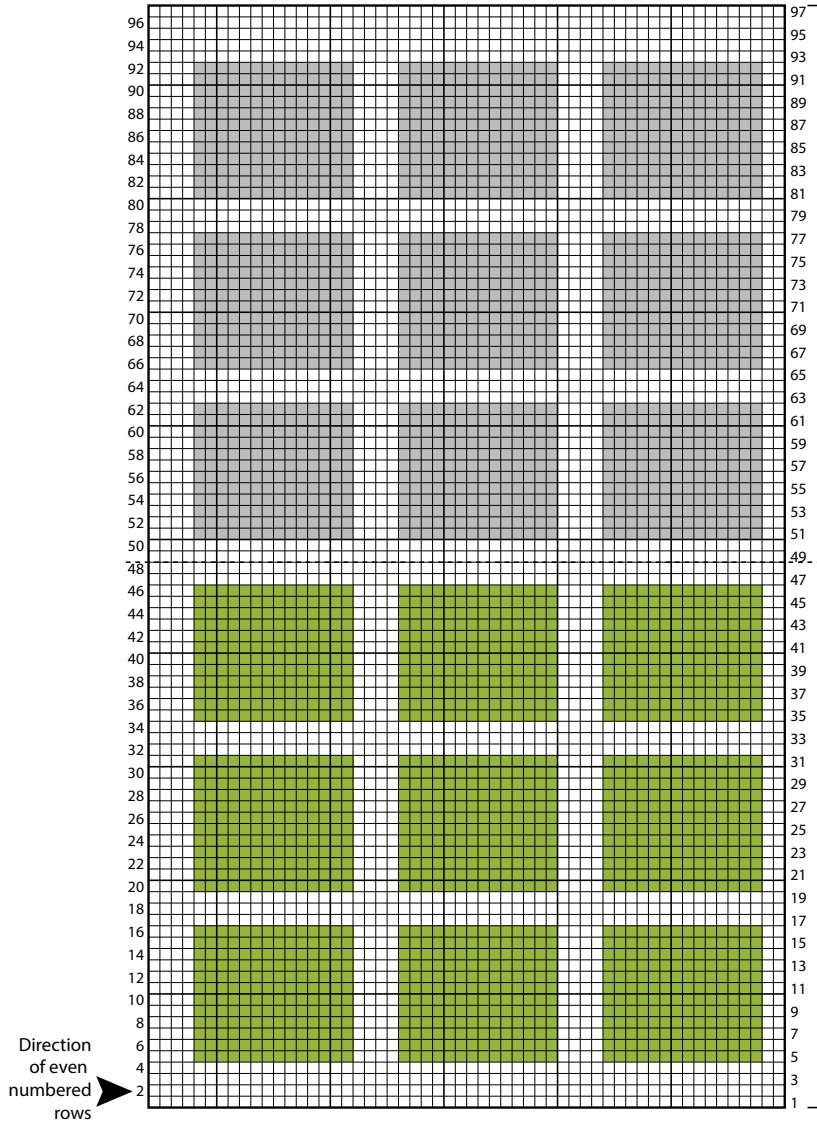


SEAM PANELS

### ASSEMBLY DIAGRAM



Puzzle Cube Blanket Panel 1  
56 loops across



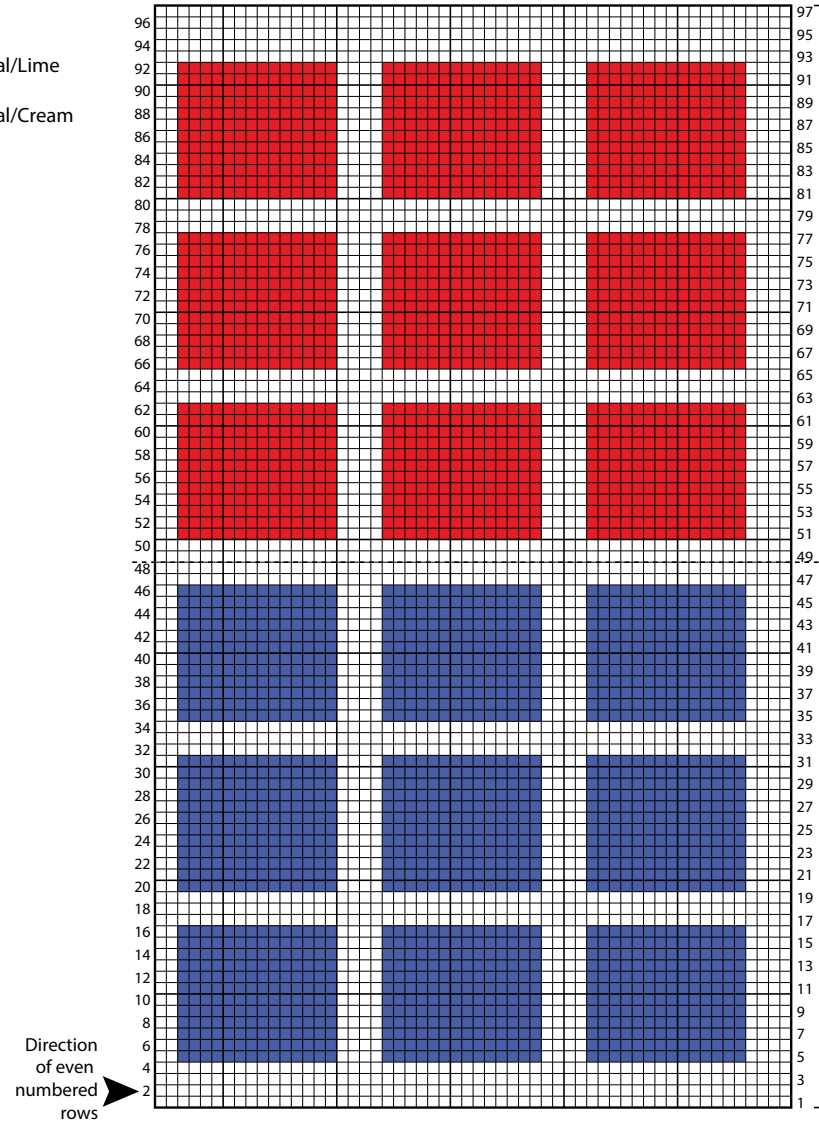
Key  
 □ = Charcoal/Lime  
 ■ = Charcoal/Cream

Charcoal/  
Cream

Charcoal/  
Lime

Direction of odd numbered rows ←

Puzzle Cube Blanket Panel 2  
56 loops across



Key  
 □ = Charcoal/Cobalt  
 ■ = Charcoal/Lava

Charcoal/  
Lava

Charcoal/  
Cobalt

Direction of odd numbered rows ←