



FRONT VIEW

MEASUREMENTS

Approx 5¼" [13 cm] high x 3¼" [8.5 cm] wide x 2¼" [5.5 cm] deep.

MATERIALS

Bernat® Super Value™ (197 g/7 oz; 389 m/426 yds)

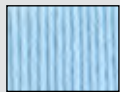
Robot Boy



Main Color (MC): Granite (53045) **1 ball**



Contrast A: White (07391) **1 ball**



Contrast B: Sky (08879) **1 ball**

Robot Girl



Main Color (MC): Super Pink (53416) **1 ball**



Contrast A: White (07391) **1 ball**

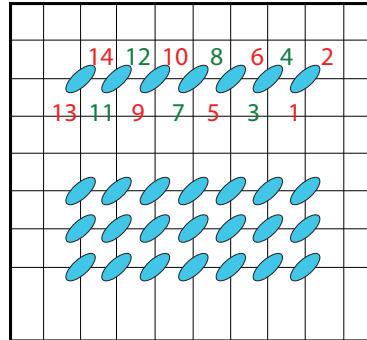


Contrast B: Granite (53045) **1 ball**

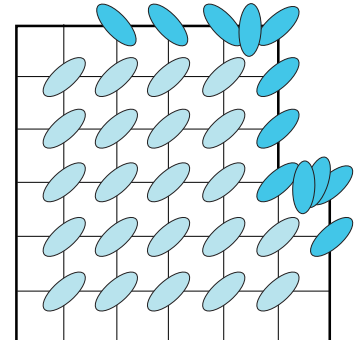
1 sheet of #7 (7-count per inch) plastic canvas. Large-eyed blunt-tipped sewing needle. Scissors.

STITCHES

Continental Stitch



Whipstitch



INSTRUCTIONS

Canvas Pieces

Cut plastic canvas pieces to the following sizes:

Front: Cut 1 piece, 34 holes x 20 holes

Back: Cut 1 piece, 34 holes x 20 holes. Cut opening 16 holes x 9 holes as per Diagram 1.

Back Flap: Cut 1 piece, 18 holes x 10 holes.

Sides: Cut 2 pieces, 34 holes x 14 holes.

Top: Cut 1 piece, 20 holes x 14 holes. Cut coin slit 2 holes x 10 holes in center of piece as per Diagram 2.

Bottom: Cut 1 piece, 20 holes x 14 holes.

DIAGRAM 1

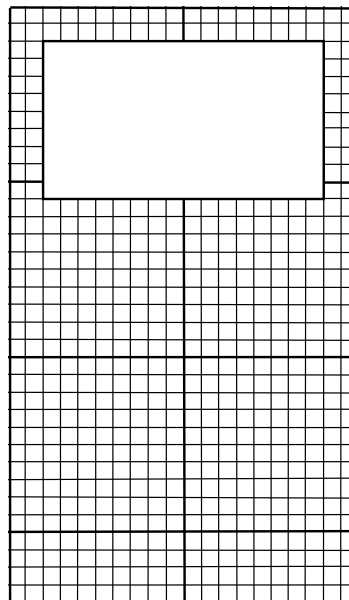
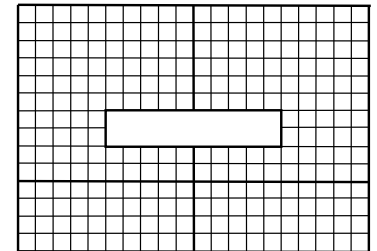


DIAGRAM 2



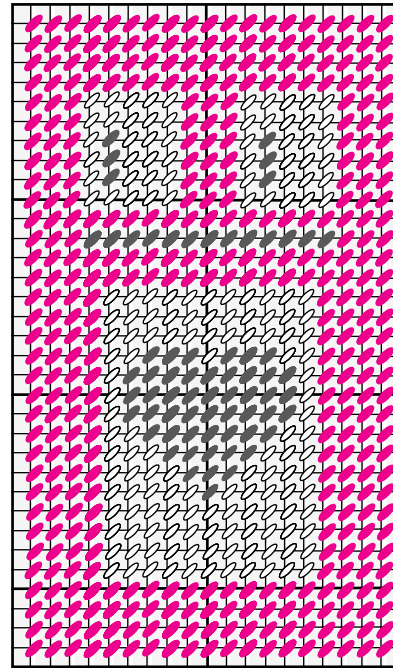
Assembly

Using continental stitch, stitch Body Front following color stitch chart of choice (see diagrams). Using continental stitch and MC, stitch Front, Top, Bottom, Sides and Back Flap. Using whipstitch and MC, work 1 stitch in each hole around coin slit opening.

With MC, whipstitch along top edge Back Flap to Back, centering over opening. With MC, whipstitch Sides to front and back of Body then whipstitch top and bottom to Body making sure the piece with coin slit is at the top of Body.



ROBOT GIRL DIAGRAM



ROBOT BOY DIAGRAM

