



KNIT 1 SKILL LEVEL: EASY

## ABBREVIATIONS

**Approx** = Approximately

**K** = Knit

**P** = Purl

**Pat** = Pattern

**Rep** = Repeat

**RS** = Right side

**Sl1Pwyib** = Slip next stitch purlwise with yarn in back of work

**Sl1Pwyif** = Slip next stitch purlwise with yarn in front of work

**St(s)** = Stitch(es)

## MEASUREMENT

Approx 20" [51 cm] square.

## GAUGES

8 sts and 18 rows = 4" [10 cm] in Woven Stripe Pat.

7 sts and 16 rows = 4" [10 cm] in garter st.

## INSTRUCTIONS

### PILLOW

#### Note:

- Worked over multiple of 2 sts +3.
- Carry yarn when not in use loosely up side of work.
- When carrying yarn behind/in front of slipped sts, be sure yarn is loose enough to maintain gauge and prevent work from puckering.

## FRONT

With MC, loosely cast on 39 sts.

**1st and 2nd Set-up rows:** Knit.

Proceed in Slip Stitch Stripe Pat as follows (see chart on page 2). Join A.

**1st row:** (RS). With A, K1. \*Sl1Pwyib. K1. Rep from \* to end of row.

**2nd row:** \*K1. Sl1Pwyif. Rep from \* to last st. K1.

**3rd and 4th rows:** With MC, knit.

**5th row:** With A, K1. \*K1. Sl1Pwyib. Rep from \* to last 2 sts. K2.

**6th row:** K2. \*Sl1Pwyif. K1. Rep from \* to last st. K1.

**7th and 8th rows:** With MC, knit.

## MATERIALS

**Bernat® Blanket™** (10.5 oz/300 g; 220 yds/201 m)

**Main Color (MC)** Vintage White (10006) **2 balls or 268 yds/245 m**

**Contrast A** Clay Pot Coral (10946) **1 ball or 47 yds/43 m**

Size U.S. 11 (8 mm) Susan Bates® Silvalume® knitting needles **or size needed to obtain gauge.** 20" [51 cm] square pillow form. Susan Bates® yarn needle.

Rep 1st to 8th rows for Slip Stitch Stripe Pat until work from beg measures approx 20" [51 cm], ending on a 4th or 8th row of pat. Cast off.

**BACK** (Make 2)

With MC, cast on 35 sts.

**Ribbing: 1st row:** (RS). K1. \*P1. K1.

Rep from \* to end of row.

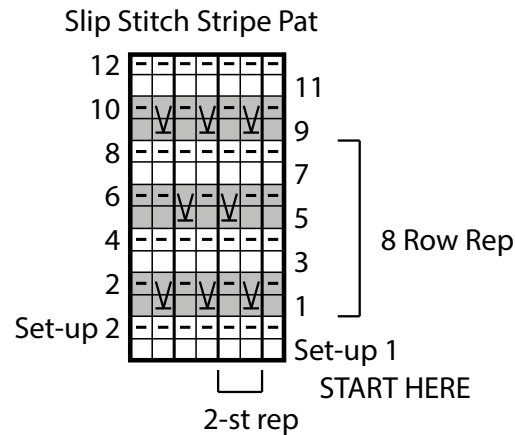
**2nd row:** P1. \*K1. P1. Rep from \* to end of row.

**3rd to 8th rows:** Rep 1st and 2nd rows 3 times more.

Proceed in garter st (knit every row) until work from beg measures 13" [33 cm].

Cast off.

**Joining Front and Back:** Overlap Back pieces to match Front, with ribbed section in center to create opening to insert pillow form. *Working through all thicknesses*, seam 4 sides of Pillow. Insert pillow form.



**KEY**

- = With MC, knit on RS rows. Purl on WS rows.
- = With A, knit on RS rows. Purl on WS rows.
- = With MC, knit on WS rows.
- = With A, knit on WS rows.
- = With A, Sl1Pwyib on RS rows. Sl1Pwyif on WS rows.



FRONT



BACK