



SUPER BULKY



KNIT 1 SKILL LEVEL: EASY

ABBREVIATIONS

Approx = Approximately

Beg = Beginning

K = Knit

Kfb = Knit Front Back

P = Purl

Rep = Repeat

RS = Right Side

St(s) = Stitch(es)

WS = Wrong Side

MEASUREMENT

Approx 20" [51 cm] square.

GAUGE

9.5 sts and 14 rows = 4" [10 cm] in stocking st.

INSTRUCTIONS

Note: When working from charts, carry color not in use loosely across WS of work. The colors are never twisted around one another.

FRONT

With A, cast on 47 sts.

Work 4 rows in stocking st, noting that 1st row is RS.

Reading chart from right to left on RS rows, and from left to right on WS rows, work Chart I in stocking st until all 14 rows are complete. See chart on page 2.

With A, work 4 rows in stocking st.

Reading chart from right to left on RS rows, and from left to right on WS rows, work Chart II in stocking st until all 14 rows are complete.

With A, work 4 rows in stocking st.

Reading chart from right to left on RS rows, and from left to right on WS rows, work Chart I in stocking st until all 14 rows are complete.

With A, work 4 rows in stocking st. Cast off knitwise.

MATERIALS

Bernat® Blanket™ (10.5 oz/300 g; 220 yds/201 m)

Contrast A Chocolate (04807) **2 balls**

Bernat® Blanket Confetti™ (10.5 oz/300 g; 220 yds/201 m)

Contrast B Beige Confetti (62019) **1 ball**

Size U.S. 10½ (6.5 mm) knitting needles **or size needed to obtain gauge.** Tapestry needle. 20" [51 cm] square pillow form.

BACK (make 2 alike)
With A, cast on 44 sts.

1st row: (RS). *K2. P2. Rep from * to end of row
Rep last row 7 times more.

Next row: (K10. Kfb) 3 times. K11.
47 sts.

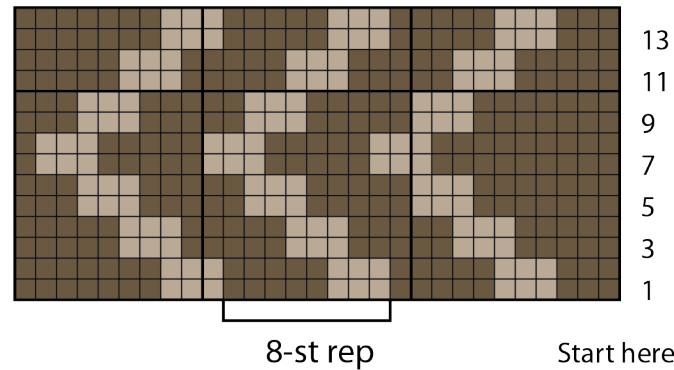
Proceed in stocking st until work from beg measures 13" [33 cm], ending on a purl row. Cast off knitwise.

FINISHING

Pin pieces to measurements. Cover with a damp cloth, leaving cloth to dry.

Overlap Back pieces to match Front, with ribbed sections in center to create opening to insert pillow form. Sew outer edge seams.

Chart I



Key

■ = A

■ = B



Chart II

