



KNIT | SKILL LEVEL: **INTERMEDIATE**

ABBREVIATIONS

Approx = Approximately

Beg = Begin(ning)

Cont = Continue(ity)

K = Knit

P = Purl

Rep = Repeat

RS = Right side

St(s) = Stitch(es)

WS = Wrong side

MEASUREMENT

Approx 22" [56 cm] square.

GAUGE

13 sts and 22 rows = 4" [10 cm] in stocking st with larger needles.

INSTRUCTIONS

Note: Work chart using Intarsia technique as follows: To change colors, wind the 2 colors around each other, where they meet on WS to avoid a hole.

FRONT

With A and larger needles, cast on 70 sts.

Work Chart in stocking st to end of chart, reading knit rows from right to left and purl rows from left to right. Chart is shown on page 2.

With MC, cast off.

BACK (make 2 pieces, 1 with MC and 1 with A)

With smaller needles, cast on 70 sts.

1st row: (RS). K2. *P2. K2. Rep from * to end of row.

2nd row: *P2. K2. Rep from * to last 2 sts. P2.

Rep last 2 rows (K2. P2) ribbing 3 times more. 8 rows ribbing in total.

Change to larger needles and cont as follows:

Beg on a knit row, proceed in stocking st until work from beg measures 14½" [37 cm], ending on a purl row.

Cast off.

MATERIALS

Bernat® Velvet™ (10.5 oz/300 g; 315 yds/288 m)

Main Color (MC) Velvet teal (32005) **1 ball**

Contrast A Smokey Green (32025) **1 ball**

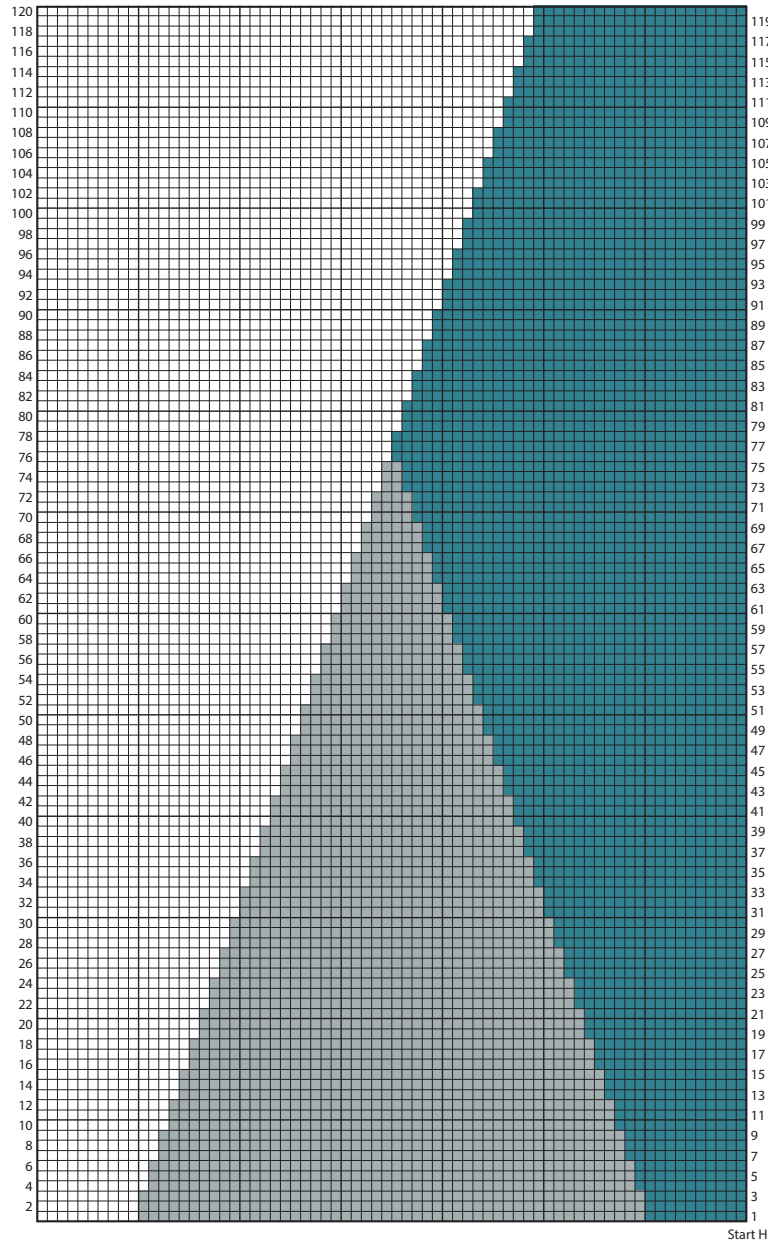
Contrast B Blush (32027) **1 ball**

Sizes U.S. 8 (5 mm) and U.S. 9 (5.5 mm) knitting needles **or size needed to obtain gauge.** 22" [56 cm] square pillow form.

FINISHING

Pin pieces to measurements. Cover with a damp cloth, leaving cloth to dry. Overlap Back pieces to match Front, with MC Back piece aligned with Front cast-off edge and A Back piece aligned with Front cast-on edge, and ribbed sections in center to create opening to insert pillow form as shown in photo. Sew outer edge seams.

Back



- Key
- = MC
 - = Contrast A
 - = Contrast B