

BERNAT® PRETTY POLKA-DOT KNIT PILLOW



KNIT | SKILL LEVEL: EASY

ABBREVIATIONS

Approx = Approximately

Beg = Beginning

K = Knit

Pat = Pattern

Rem = Remain(ing)(s)

Rep = Repeat

RS = Right side

Sl1Pwyib = Slip next stitch purlwise with yarn in back of work

Sl1Pwyif = Slip next stitch purlwise with yarn in front of work

St(s) = Stitch(es)

Tog = Together

WS = Wrong side

MEASUREMENT

Approx 20" [51 cm] square.

GAUGE

15 sts and 25 rows = 4" [10 cm] in stocking st.

INSTRUCTIONS

Notes:

- Front and Back are worked the same with the shades reversed. The instructions are written for Front. If changes are necessary for Back the instructions will be written thus ().
- Pat worked over multiple of 4 sts +3.
- When working 5th, 6th 11th and 12th rows in Pat, carry B (A) loosely across WS of work.

- When not in use, leave B(A) at WS of work picking up when required, being careful not to pull too tightly to avoid pulling fabric.

FRONT and BACK

See chart on page 2.

With A (B), cast on 75 sts. **Do not** join. Working back and forth across

needle in rows proceed as follows:

Set-up rows: 1st row: (RS). Knit.

2nd row: Purl.

Proceed in pat as follows:

1st row: (RS). Knit.

2nd row: Purl

3rd and 4th rows: Rep last 2 rows once more.

5th row: With B (A), *(Sl1Pwyib) 3 times. K1. Rep from * to last 3 sts. (Sl1Pwyib) 3 times.

MATERIALS

Bernat® Velvet™ (10.5 oz/300 g; 315 yds/288 m)

Contrast A Vintage Teal (32006) **1 ball**

Contrast B Velvet teal (32005) **1 ball**

Size U.S. 8 (5 mm) circular knitting needle 24" [61 cm] long **or size needed to obtain gauge.** 20" [51 cm] square pillow form.

BERNAT® PRETTY POLKA-DOT KNIT PILLOW

6th row: (Sl1Pwyif) 3 times. *K1. (Sl1Pwyif) 3 times. Rep from * to end of row.

7th to 10th rows: With A (B), as 1st to 4th rows.

11th row: With B (A), (Sl1Pwyib) 4 times. *Sl1Pwyib. K1. (Sl1Pwyib) twice. Rep from * to last 3 sts. (Sl1Pwyib) 3 times.

12th row: (Sl1Pwyif) 3 times. *(Sl1Pwyif) twice. K1. Sl1Pwyif. Rep from * to last 4 sts. (Sl1Pwyif) 4 times.

Last 12 rows form pat.

Cont in pat until work from beg measures approx 19¼" [49 cm], ending on a 10th row.

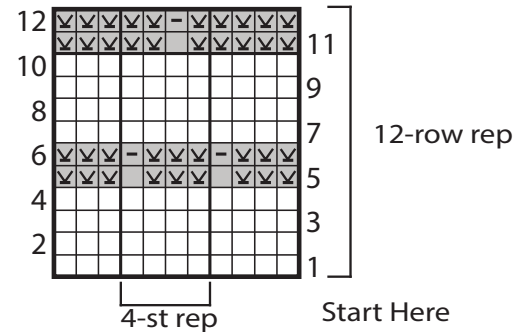
Next row: (RS). With A (B), knit.

Next row: Purl.

Cast off.

FINISHING

Sew 3 sides of Front and Back tog. Insert pillow form. Sew rem side closed.



KEY

- = With A(B), knit on RS rows. With A(B), purl on WS rows.
- = With B(A), knit on RS rows.
- = With B(A), knit on WS rows.
- = With B(A), Sl1Pwyib on RS. With B(A), Sl1Pwyif on WS.

Front



Back

