

BERNAT® FAIR ISLE KNIT PILLOW



KNIT 1 SKILL LEVEL: **INTERMEDIATE**

ABBREVIATIONS

Approx = Approximately

Beg = Beginning

Rem = Remaining

Rep = Repeat

Rnd(s) = Round(s)

St(s) = Stitch(es)

WS = Wrong side

MEASUREMENT

Approx 20" [51 cm] square.

GAUGE

11 sts and 14 rows = 4" [10 cm] in stocking stitch.

INSTRUCTIONS

Notes:

- Pillow is worked in the rnd from side to side and seamed at either end.
- When working from chart, carry color not in use loosely across WS of work, but never over more than 5 sts. When it must pass over more than 5 sts, weave it loosely over and under color in use on WS.

With A, cast on 110 sts. Join in rnd, being careful not to twist sts. Place marker to indicate beg of rnd.

1st to 69th rnds: Knit in rnds, knitting chart to end of chart, reading rows from right to left, noting 10-st rep will be worked 11 times. Chart is shown on page 2.
Cast off.

FINISHING

Lay piece flat and sew 1 side closed. Insert pillow form and sew rem side closed.

MATERIALS

Bernat® Softee® Chunky™ Tweeds™ (10.5 oz/300 g; 316 yds/289 m)

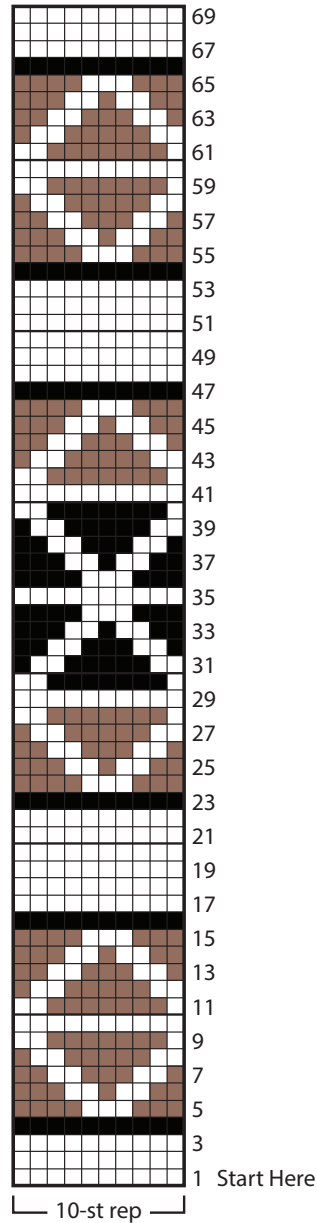
Contrast A Midnight White (11001) **1 ball** or 228 yds/209 m

Bernat® Softee® Chunky™ Tweeds™ (2.8 oz/80 g; 84 yds/77 m)

Contrast B Black Tweed (39005) **1 ball** or 68 yds/62 m

Contrast C Chocolate Tweed (39002) **2 balls** or 116 yds/106 m

Size U.S. 11 (8 mm) circular knitting needle 36" [91.5 cm] long **or size needed to obtain gauge.** Stitch marker. 20" [51 cm] square pillow form.



KEY

- = Contrast A
- = Contrast B
- = Contrast C