

## BERNAT® NORDIC HOLIDAY PILLOW | KNIT



 KNIT | SKILL LEVEL: INTERMEDIATE

**MEASUREMENTS**  
18" [45.5 cm] square.

**GAUGE**  
18 sts and 24 rows = 4" [10 cm]  
in stocking stitch.

### MATERIALS

**Bernat® Super Value™** (197 g/7 oz; 389m/426 yds)

**Main Color (MC)** Cherry Red (53436) **1 ball**

**Contrast A** Winter White (07407) **1 ball**

Sizes U.S. 8 (5 mm) knitting needles **or size needed to obtain gauge.**

Pillow form 18" [45.5 cm] square.

### ABBREVIATIONS

**Approx** =  
approximate(ly)

**Cont** = Continue(ity)

**K** = Knit

**P** = Purl

**Rem** = Remain(ing)

**Rep** = Repeat

**RS** = Right side

**St(s)** = Stitch(es)

**WS** = Wrong side

### INSTRUCTIONS

#### FRONT

With MC, cast on 74 sts.

**1st row:** (RS). Knit.

**2nd row:** Purl.

**\*\*\*3rd row:** K2. (Knit 1st row of Chart I across next 4 sts, *reading row from right to left*) 17 times. K4.

**4th row:** P4. (Purl 2nd row of Chart I across next 4 sts, *reading row from left to right*) 17 times. P2.

Chart I is now in position.

Cont as established until 6 rows of Chart I are complete.\*\*\*

**\*\*Place Chart II: Next row:** (RS). K2. (Knit 1st row of Chart II across next 10 sts *reading row from right to left*) 7 times. K2.

**Next row:** P2. (Purl 2nd row of Chart II across next 10 sts *reading row from left to right*) 7 times. P2.

Chart II is now in position.

Cont as established until 14 rows of Chart II are complete.\*\*

Work Chart III in stocking st until 53 rows of Chart III are complete, *reading knit rows from right to left and purl rows from left to right.*

**Next row:** (WS). With MC, purl. Work from \*\* to \*\* once more, then from \*\*\* to \*\*\* once.

With MC, knit 1 row. Cast off.

#### BACK

With MC, cast on 74 sts.

**1st row:** (RS). \*K2. P2. Rep from \* to last 2 sts. K2.

**2nd row:** \*P2. K2. Rep from \* to last 2 sts. P2.

Rep last 2 rows of (K2. P2) ribbing until Back from beg measures 18" [45.5 cm].

Cast off in ribbing.

### FINISHING

With WS tog, sew 3 sides of Front and Back tog. Insert pillow form. Sew rem edge closed.

Key  
 ■ = Main Color (MC)  
 □ = Contrast A

Chart I

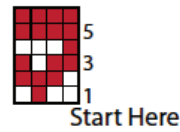


Chart II

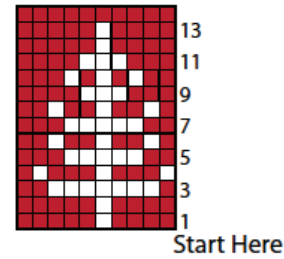


Chart III

