



KNIT | SKILL LEVEL: **EASY**

## ABBREVIATIONS

**Approx** = Approximately

**Beg** = Begin(ning)

**Cont** = Continue(ity)

**K** = Knit

**Kfb** = Increase 1 stitch by knitting into front and back of next stitch

**K2tog** = Knit next 2 stitches together

**Pat** = Pattern

**Rep** = Repeat

**RS** = Right side

**St(s)** = Stitch(es)

**Tog** = Together

**WS** = Wrong side

## MEASUREMENTS

Approx 54" x 59½" [137 x 151 cm], excluding fringe.

## GAUGE

8.5 sts and 13 rows = 4" [10 cm] in Ripple Pat.

## INSTRUCTIONS

### Notes:

- Blanket is worked from side to side.
- Blanket is worked over st multiple of 24 sts +6.

## Stripe Pat

**Note:** Break yarn at each color change.

With A, work 2 rows.

With B, work 2 rows.

With A, work 2 rows.

With D work 8 rows.

With A, work 2 rows.

With B, work 2 rows.

With A, work 2 rows.

With E, work 8 rows.

With A, work 2 rows.

With B, work 2 rows.

With A, work 2 rows.

With C, work 8 rows.

## MATERIALS

**Bernat® Blanket™** (10.5 oz/300 g; 220 yds/201 m)

**Contrast A** Twilight (10905) **2 balls or 258 yds/236 m**

**Contrast B** Vintage White (10006) **3 balls or 595 yds/544 m**

**Contrast C** Aquatic (10801) **1 ball or 121 yds/110.5 m**

**Bernat® Blanket Brights™** (10.5 oz/300 g; 220 yds/201 m)

**Contrast D** Bright Pink (12042) **1 ball or 121 yds/110.5 m**

**Contrast E** Bright Lime (12041) **1 ball or 121 yds/110.5 m**

Size U.S. 11 (8 mm) Susan Bates® Silvalume® circular knitting needle 36" [91.5 cm] long **or size needed to obtain gauge.** Susan Bates® steel yarn needle.

With A, work 2 rows.  
 With B, work 2 rows.  
 With A, work 2 rows.  
 With B, work 78 rows.

With A, work 2 rows.  
 With B, work 2 rows.  
 With A, work 2 rows.  
 With C, work 8 rows.

With A, work 2 rows.  
 With B, work 2 rows.  
 With A, work 2 rows.  
 With E, work 8 rows.

With A, work 2 rows.  
 With B, work 2 rows.  
 With A, work 2 rows.  
 With D work 8 rows.

With A, work 2 rows.  
 With B, work 2 rows.  
 With A, work 2 rows.

These 174 rows form Stripe Pat.

## BLANKET

With A, **loosely** cast on 126 sts.  
 See chart on page 3.

**Set-up row: 1st row:** (WS). Knit.  
 Beg working Stripe Pat AT SAME TIME, proceed in Ripple Pat as follows:

**1st and 2nd rows:** With A, knit, noting 1st row is RS.

**3rd row:** With B, knit.

**4th row:** K3. Purl to last 3 sts. K3.

**5th and 6th rows:** With A, knit.

**7th row:** (RS). With D, knit.

**8th row:** K3. Purl to last 3 sts. K3.

**9th row:** K3. \*(K2tog) 4 times. (Kfb) 8 times. (K2tog) 4 times. Rep from \* to last 3 sts. K3.

**10th row:** K3. Purl to last 3 sts. K3.

**11th to 14th rows:** Rep 7th to 10th rows once more.

These 14 rows form Ripple Pat. First 14 rows of Stripe Pat complete.

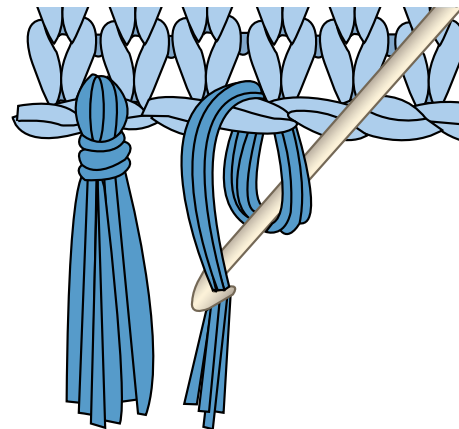
Using appropriate color and keeping cont of Stripe Pat, rep 1st to 14th rows of Ripple Pat 11 times more, then rep 1st to 6th rows once, until all 174 rows of Stripe Pat are complete.

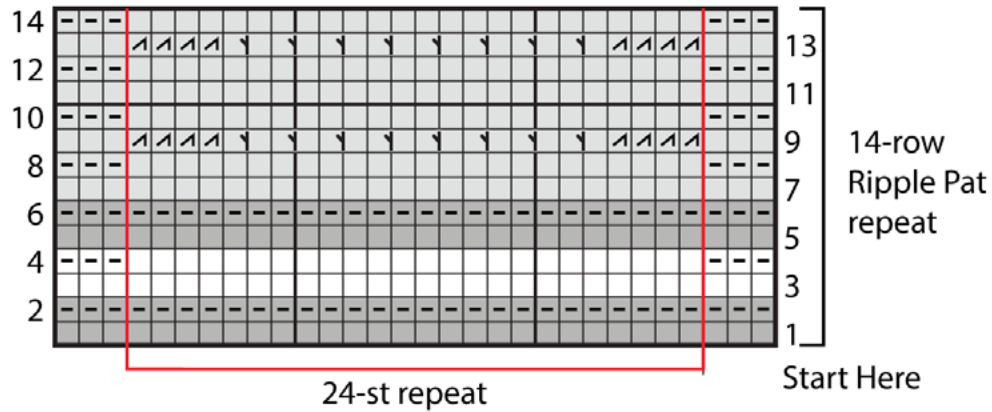
**Next row:** With A, knit.

Cast off **loosely** knitwise.

## FINISHING

**Fringe:** Cut lengths of yarn 12" [30.5 cm] long. Taking 2 strands of same color tog, fold in half and knot into fringe around edge st at end of every other row along top and bottom edges (noting Blanket was worked from side to side), matching fringe color to color of stripe it will be attached to. Trim fringe evenly.





- KEY**
- ☐☐☐ = Represent Stripe Pat color changes.
  - ☐ = Knit on RS rows. Purl on WS rows.
  - ☐- = Knit on WS rows.
  - ☐/ = K2tog
  - ☐\ = Kfb

