



KNIT | SKILL LEVEL: **EASY**

ABBREVIATIONS

Approx = Approximately

Cont = Continue(ity)

K = Knit

K2tog = Knit next 2 stitches together

Pat = Pattern

Rep = Repeat

RS = Right side

Ssk = Slip next 2 stitches knitwise one at a time. Pass them back onto left-hand needle, then knit through back loops together

St(s) = Stitch(es)

WS = Wrong side

Yo = Yarn over

MEASUREMENTS

Approx 44½" wide x 55" long [113 x 139.5 cm].

GAUGE

11 sts and 15 rows = 4" [10 cm] in stocking stitch.

INSTRUCTIONS

Cast on 124 sts. (Multiple of 9 sts + 7).

Do not join. Working back and forth in rows, proceed as follows: Knit 5 rows (garter st), noting first row is WS.

Proceed in Vine Lace Pat as follows:

1st row: (RS). K4. *K1. yo. K2. ssk. K2tog. K2. yo. Rep from * to last 3 sts. K3.

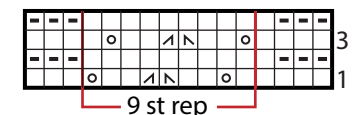
2nd row: K3. Purl to last 3 sts. K3.

3rd row: K4. *yo. K2. ssk. K2tog. K2. yo. K1. Rep from * to last 3 sts. K3.

4th row: As 2nd row.

These 4 rows form Vine Lace Pat.

Cont even in Vine Lace Pat until Blanket measures approx 54" [137 cm], ending on 3rd row of Pat. Knit 4 rows (garter st). Cast off knitwise (WS).



Key

□ = Knit on RS rows. Purl on WS rows.

▣ = K2tog

▤ = Purl on RS rows. Knit on WS rows.

▥ = ssk

▧ = yo

MATERIALS

Bernat® Felted™ (9.2 oz/260 g; 249 yds/228 m)

Sienna Fleck (80015)

4 balls or 820 yds/750 m

Size U.S. 11 (8 mm) Susan Bates® Silvalume® circular knitting needle 36" [91.5 cm] long **or size needed to obtain gauge.** Susan Bates® yarn needle.