



SUPER BULKY



KNIT 1 SKILL LEVEL: EASY

## ABBREVIATIONS

**Approx** =

Approximately

**Beg** = Beginning

**Cont** = Continue(ity)

**K** = Knit

**Kfb** = Increase 1 stitch  
by knitting into front  
and back of next stitch

**K2tog** = Knit next  
2 stitches together

**Pat** = Pattern

**Rep** = Repeat

**RS** = Right side

**St(s)** = Stitch(es)

**WS** = Wrong side

## MEASUREMENTS

Approx 44" x 54" [112 x 137]

## GAUGE

9.5 sts and 13 rows = 4" [10 cm] in  
Ripple Pat.

## INSTRUCTIONS

### Notes:

- Beg working from darkest end of ball at bottom of Blanket
- Blanket is initially worked with 2 balls alternated to elongate phasing effect. Work 2 rows with first ball; join second ball, and work 2 rows. Alternate in this same manner until first 2 balls are complete, then finish Blanket using a single ball.

## BLANKET

With A, **loosely** cast on 104 sts. **Do not** join. Work back and forth across needle in rows as follows:

See chart on page 2

**Set-up row:** (WS). Knit.

Proceed in Ripple Pat as follows:

**1st to 6th rows:** Knit, noting 1st row is RS.

**7th row:** Knit.

**8th row:** K4. Purl to last 4 sts. K4.

**9th row:** K4. \*(K2tog) 4 times. (Kfb) 8 times. (K2tog) 4 times. Rep from \* to last 4 sts. K4.

**10th row:** K4. Purl to last 4 sts. K4.

**11th to 14th rows:** Rep 7th to 10th rows once more.

These 14 rows form Ripple Pat.

Cont in pat until work from beg measures approx 53½" [136 cm], ending on a 7th row.

**Next row:** Knit.

Cast off.

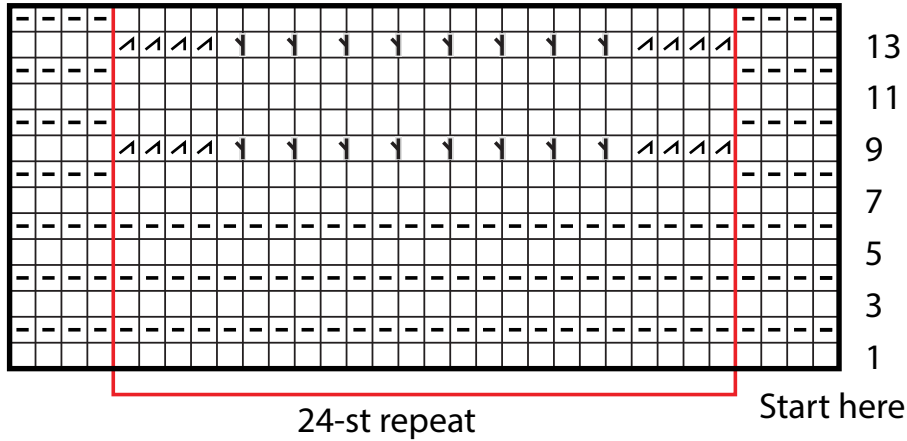
## MATERIALS

**Bernat® Blanket Perfect Phasing™** (10.5 oz/300 g; 220 yds/201 m)

Crimson (43002)

**3 balls or 625 yds/571.5 m**

Size U.S. 11 [8 mm] Susan Bates® Silvalume® circular knitting needle 36" (91.5 cm) long **or size needed to obtain gauge.** Susan Bates® yarn needle.



**KEY**

- ☐ = Knit on RS rows. Purl on WS rows.
- ◻ = Knit on WS rows.
- ◻ = K2tog
- ◻ = Kfb

